



WEEK 03

20  24



GOVERNMENT OF SIERRA LEONE
MINISTRY OF HEALTH
NATIONAL PUBLIC HEALTH AGENCY

NATIONAL WEEKLY EPIDEMIOLOGICAL BULLETIN

WEEK 03: 15th — 21st January, 2024



The Executive Director National Public Health Agency's New year message and words of inspiration to the management and staff of NPHA



Embracing a Healthier Future in Sierra Leone

Fellow Sierra Leoneans,

As we embark on the promising journey of 2024, I extend my heartfelt greetings to each one of you. Let us bid farewell to the challenges of the past and welcome the myriad opportunities that lie ahead. Together, as a united country, we possess the collective power to envision a Sierra Leone that is not only healthier but also resilient—a nation where public health thrives, and society flourishes, even in the face of adversities.

Our shared aspiration is to position Sierra Leone as a pioneering hub for public health, ensuring the safety and well-being of all its citizens. In the upcoming year, I warmly invite everyone, including our dedicated ministries, various departments and agencies, invaluable partners, communities, and the media, to come together in the noble pursuit of a healthier Sierra Leone. Let us collaboratively construct a robust and inclusive healthcare system, leaving no one behind.

Your unwavering support, active engagement, and steadfast commitment to prioritizing health will serve as the driving force propelling us towards success.

Together, let us embrace unity, resilience, and compassion as we navigate this transformative journey. May the New Year usher in a wave of good health, joy, and prosperity for you and your loved ones.

Wishing you all a joyful New Year!


With warm regards,

Brig. Gen. Prof. Foday Sahr

Executive Director, National Public Health Agency, Sierra Leone

 <https://www.facebook.com/NPHASL>

 <https://twitter.com/slnpha>

 www.npha.gov.sl

KEY SURVEILLANCE PRIORITY DISEASE AND 117 CALL CENTRE HIGHLIGHTS FOR THE WEEK

Disease specific report Highlights

- **Lassa fever: One (1) confirmed case of Lassa fever confirmed from Kenema district. The case was a female aged 45yrs that was notified on the 18th Jan. 2024**
- **Monkeypox:** One (1) case of suspected Monkeypox was reported this week from Port Loko. Sample was collected and sent to Jui P3 Lab for confirmation
- **Measles:** Four (4) cases of suspected measles were reported this week. All of the cases were under five years of age from Port Loko, Karene, Tonkolili and WAR (1) each per districts. The cases were investigated and samples sent to CPHRL for confirmation.
- **Animal Bite (Dog):** Thirty-four (34) Dog bite cases were reported this week. Of the cases, eight were under five years and twenty-six were above five years. The highest number of cases were from Kono and Tonkolili (5), Bombali and Pujehun (4) and Kailahun and WAR (3) each per districts.
- **Animal Bite (Snake):** Fifteen (15) Snake bite cases were reported this week. Of the cases, two were under five and fifteen above five years of age. The highest number of cases were from Tonkolili (3), and Kailahun Koinadugu and Kono (2) each per district.
- **Maternal death:** Five (5) maternal deaths were reported from WAU (2), while Bo, Bombali and Kailahun (1) each per district.
- **Yellow Fever :** Five (5) suspected cases of Yellow Fever were reported this week. Of the cases, one was under five and four were above five years of age and were from WAU (2), Kambia, Port Loko and Tonkolili (1) each per districts. The cases were investigated and samples sent to CPHRL for confirmation
- **Acute Viral Hemorrhagic Fever (AVHF):** Twelve (12) cases of suspected AVHF were reported this week. All of the cases were above five years. from Kenema (11) and Tonkolili (1) district. The cases were investigated and samples sent to Kenema regional Lab. for confirmation.
- **Bacterial Meningitis:** Five (5) case of suspected Meningitis from were reported. No sample was collected

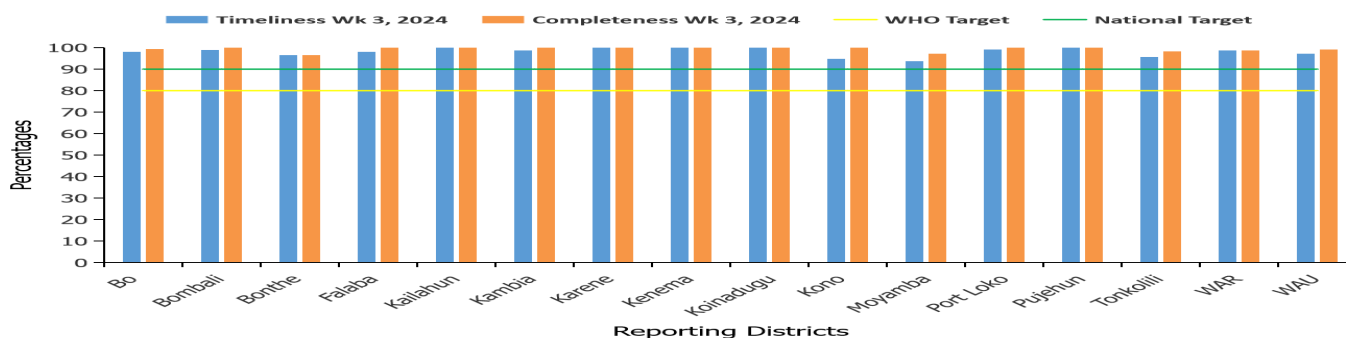
117 Call Centre Highlights

- **Pneumonia:** Twelve (12) calls related to Pneumonia were made this week countrywide. Two were underfives and ten aged above five years. WAU (4), WAR and Kenema (3) whiles Bombali and Koinadugu (1) each per district
- **Perinatal Deaths:** Eleven (11) calls related to Perinatal deaths were made this week of which, stillbirth (3) and neonatal death (8)
- **Tuberculosis:** Four (4) call related to Tuberculosis were made from Kono, Port Loko and WAU
- **Measles:** Three (3) calls related to Measles were made from Port Loko district this week.

117 Call Summary for epi week 1, 2024

- A total of 6,644 calls were received and responded to, out of which 6,546 (98%) were prank and 118 (2%) were signals
- Out of the total signals received:
 - Death 98 (83%)
 - Sick 13 (11%)
 - Health Emergencies 7 (6%): dog bite 4 and snake bite 3

Health Facility Timeliness & Completeness of Weekly report by district, (Epi week 3, 2024)

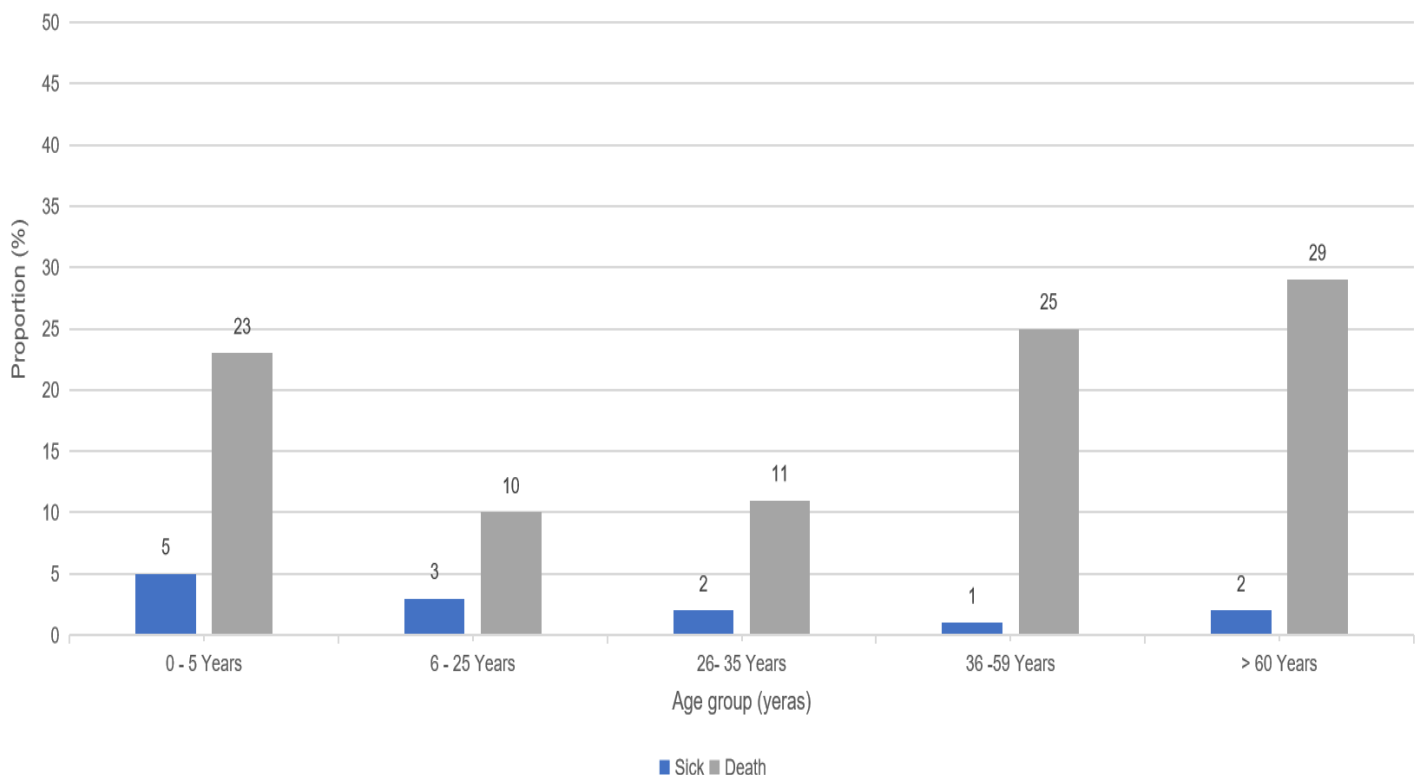


For week 3 of 2024, 16 out of 16 districts achieved both the WHO and national targets for timeliness and completeness

Updates from the samples of suspected cases reported for this week

- **Measles:** Port Loko continues to line list cases based on signs and symptoms and epidemiological linkage
- **Yellow fever:** Five suspected cases of Yellow fever reported this. All samples collected and sent to CPHRL for confirmation and results are still pending. The turn around time (TAT) for yellow fever samples in country is seven days
- **Acute Viral Haemorrhagic Fever (AVHF):** Seven cases of suspected AVHF were reported this week. The sample were collected and sent to Kenema regional Lab. One of the samples from Kenema tested positive for Lassa Fever and all other samples however tested Negative AVHFs
- **Monkeypox:** One case of Monkeypox sample was sent to Jui P3 Lab from Port Loko which tested negative for Monkeypox
- **Bacterial Meningitis:** No sample was collected for bacterial meningitis confirmation

117 Sick and death signals by age groups, epi week 3, 2024 (n=13) (n=98)



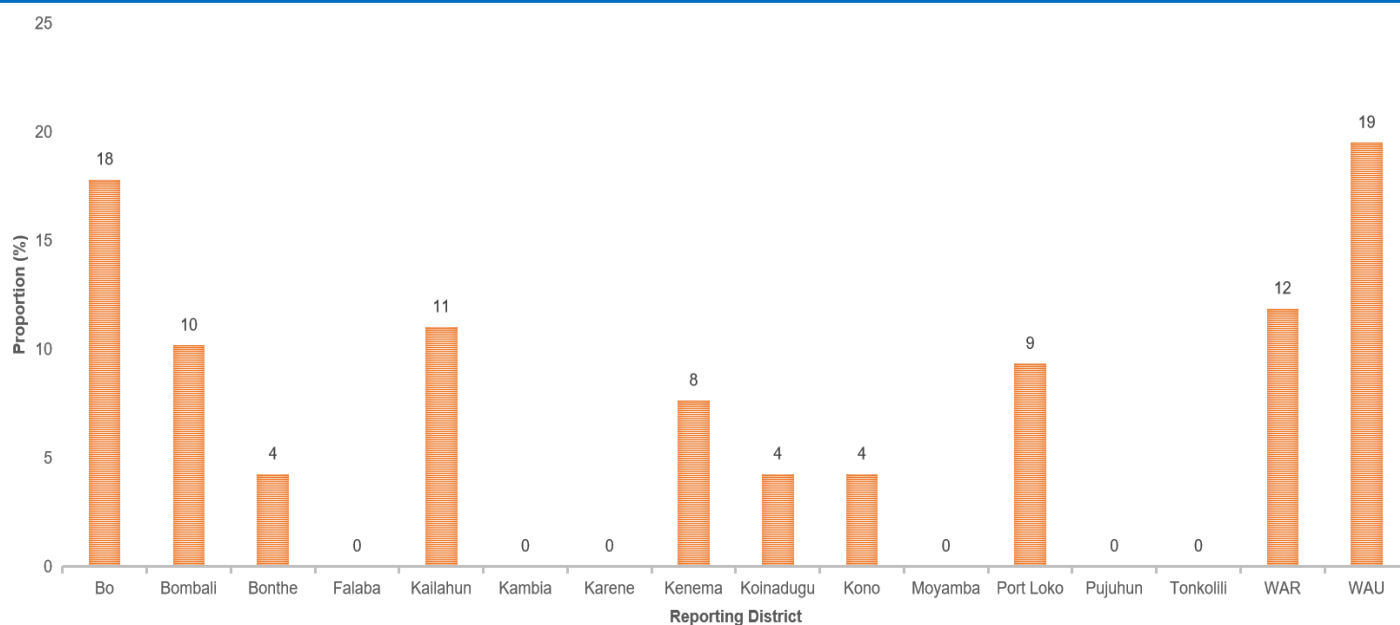
For week three of 2024, a total of 111 call signals for sick and death were made of which 98 were related to deaths and 13 were for sick. The age groups of >60 had a higher proportion of death reported and the least was 6-25years. For the sick cases the age group of 0-5 reported the highest

Submission of report by health facility via phone call, SMS, paper form or Mobile internet (Epi week 3, 2024)

| District | # Reported HFs | Call | Paper forms | SMS | Mobile SMS | Mobile internet | Mobile Total | Total Submission | % Mobile Submission |
|-------------------|----------------|-----------------|-------------|----------------|------------|-----------------|--------------|------------------|---------------------|
| Bo | 150 | 77 | 0 | 2 | 9 | 60 | 69 | 148 | 47 |
| Bombali | 96 | 0 | 0 | 3 | 12 | 81 | 93 | 96 | 97 |
| Bonthe | 89 | 41 | 0 | 0 | 2 | 43 | 45 | 86 | 52 |
| Falaba | 50 | 25 | 0 | 0 | 7 | 18 | 25 | 50 | 50 |
| Kailahun | 91 | 0 | 0 | 0 | 6 | 85 | 91 | 91 | 100 |
| Kambia | 74 | 0 | 0 | 0 | 9 | 65 | 74 | 74 | 100 |
| Karene | 62 | 0 | 0 | 14 | 9 | 39 | 48 | 62 | 77 |
| Kenema | 141 | 0 | 0 | 47 | 16 | 78 | 94 | 141 | 67 |
| Koinadugu | 67 | 0 | 0 | 46 | 3 | 18 | 21 | 67 | 31 |
| Kono | 114 | 0 | 0 | 70 | 4 | 36 | 40 | 110 | 36 |
| Moyamba | 110 | 74 | 0 | 0 | 9 | 24 | 33 | 107 | 31 |
| Port Loko | 118 | 0 | 0 | 0 | 47 | 71 | 118 | 118 | 100 |
| Pujehun | 104 | 0 | 0 | 2 | 5 | 97 | 102 | 104 | 98 |
| Tonkolili | 117 | 21 | 0 | 0 | 21 | 73 | 94 | 115 | 82 |
| WAR | 78 | 4 | 10 | 0 | 7 | 56 | 63 | 77 | 82 |
| WAU | 108 | 0 | 0 | 0 | 9 | 98 | 107 | 107 | 100 |
| Cumulative | 1569 | 242 | 10 | 184 | 175 | 942 | 1117 | 1553 | 72 |
| KEY: | | 90 - 100 | | 75 - 89 | | 0 - 74 | | | |

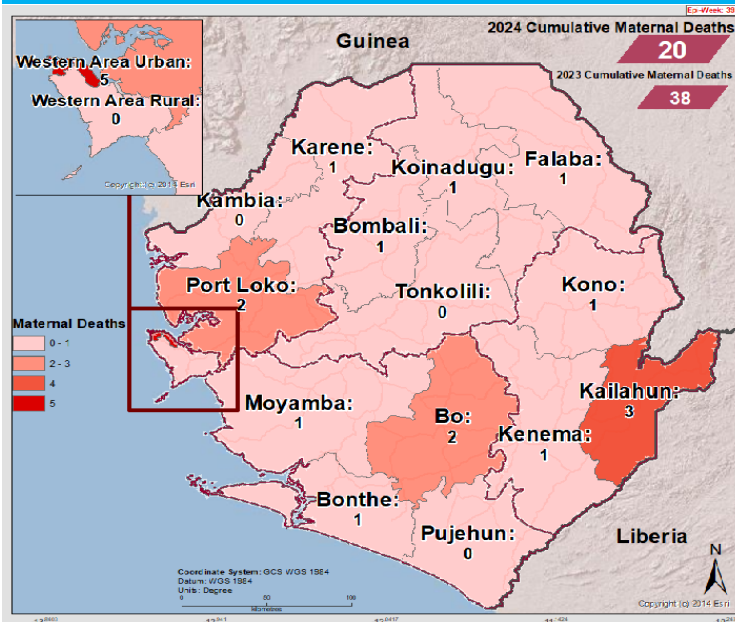
For week three of 2024, a total of 1,569 facilities reported countrywide using various means of reporting. Mobile SMS and mobile internet were used exclusively by three districts (Kailahun, Kambia and Port Loko). Only one district (WAR) used paper based reporting of which, 10/78 (13%) of the facilities reported using paper. The country has moved from paper based reporting to electronic since 2018

Call signals by reporting districts epi week 3 January, 2024 (N=118)



For week three of 2024, greater proportion of call signals were from WAU, closely followed by Bo and then WAR districts, 6/16 (37.5%) of districts made zero call.

Cumulative Maternal Deaths reported by district (Epi Week 3, 2024)



Compared Maternal Deaths reported by district (Epi Week 1- 3, 2023 & 2024)

| District | 2023 Week 1 - 3 | 2024 Week 1 - 3 | |
|---------------|-----------------|-----------------|---|
| Bo | 5 | 2 | ↓ |
| Bombali | 2 | 1 | ↓ |
| Bonthe | 4 | 1 | ↓ |
| Falaba | 3 | 1 | ↓ |
| Kailahun | 3 | 3 | ↔ |
| Kambia | 2 | 0 | ↓ |
| Karene | 0 | 1 | ↑ |
| Kenema | 2 | 1 | ↓ |
| Koinadugu | 0 | 1 | ↑ |
| Kono | 4 | 1 | ↓ |
| Moyamba | 3 | 1 | ↓ |
| Port Loko | 2 | 2 | ↔ |
| Pujehun | 1 | 0 | ↓ |
| Tonkolili | 2 | 0 | ↓ |
| Western Rural | 1 | 0 | ↓ |
| Western Urban | 4 | 5 | ↑ |
| Total | 38 | 20 | ↓ |

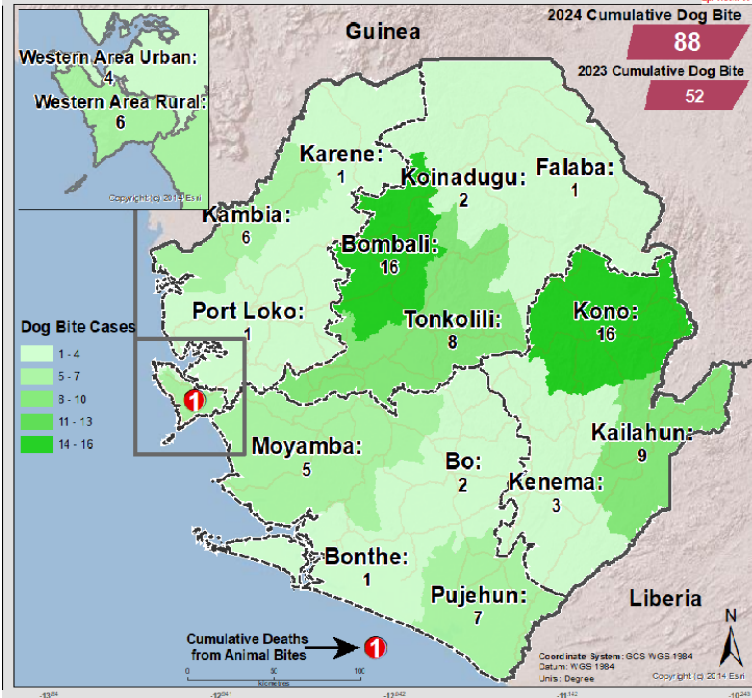
In comparison with week three of 2023, 2024 has reported less maternal deaths for the same period. Five deaths were reported this week from four districts. Total maternal deaths reported since the start of the year is twenty (20).

| District | Health Facility | No. of Death |
|--------------|-------------------------|--------------|
| Bo | Bo Govt. hospital | 1 |
| Kailahun | Kailahun Govt. hospital | 1 |
| Bombali | Bumban CHP | 1 |
| WAU | PCM Hospital | 2 |
| Total | | 13 |

In week three of 2024, a total of five maternal deaths were reported from four districts. Of these deaths, four took place in hospitals and one at PHU. Maternal death at PHU level requires investigations especially with the delays and at what stage the delay took place

Cumulative Dog Bite cases reported by district (Epi Week 3, 2024)

Compared Dog Bite cases reported by district (Epi Week 1- 3, 2023 & 2024)

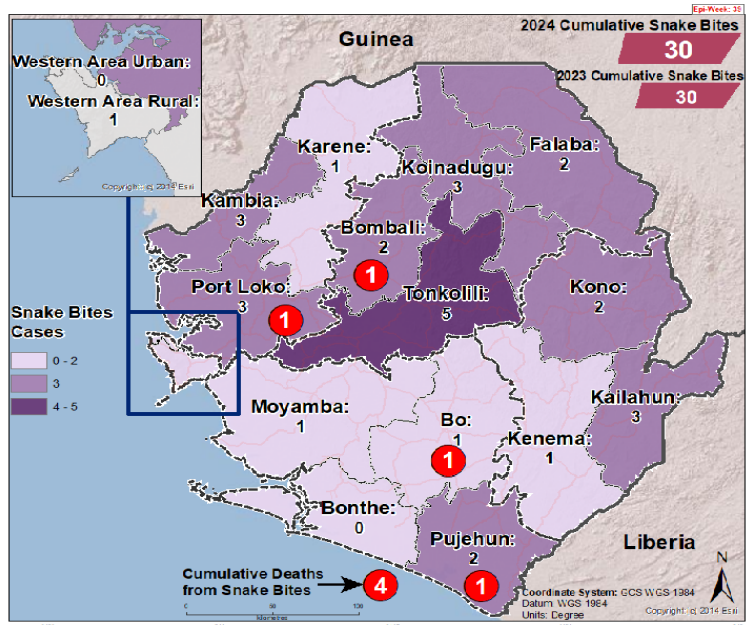


| District | 2023 Week 1 - 3 | 2024 Week 1 - 3 | |
|---------------|-----------------|-----------------|---|
| Bo | 0 | 2 | ↑ |
| Bombali | 10 | 16 | ↑ |
| Bonthe | 1 | 1 | → |
| Falaba | 1 | 1 | → |
| Kailahun | 5 | 9 | ↑ |
| Kambia | 0 | 6 | ↑ |
| Karene | 1 | 1 | → |
| Kenema | 3 | 3 | → |
| Koinadugu | 1 | 2 | ↑ |
| Kono | 13 | 16 | ↑ |
| Moyamba | 0 | 5 | ↑ |
| Port Loko | 10 | 1 | ↓ |
| Pujehun | 4 | 7 | ↑ |
| Tonkolili | 0 | 8 | ↑ |
| Western Rural | 1 | 6 | ↑ |
| Western Urban | 2 | 4 | ↑ |
| Total | 52 | 88 | ↑ |

Week three of 2024 has reported more dog bite cases including one death related to dog bite compared to 2023 same period. The highest number of cases were reported from Bombali Kono and Kailahun and Tonkolili districts and the death was from WAU district. Total reported cases since the start of the year is eighty-eight (88).

Cumulative Snake Bite cases reported by district (Epi Week 3, 2024)

Compared Snake Bite cases reported by district (Epi Week 1-3, 2023 & 2024)



| District | 2023 Week 1 - 3 | 2024 Week 1 - 3 | |
|---------------|-----------------|-----------------|---|
| Bo | 0 | 1 | ↑ |
| Bombali | 5 | 2 | ↓ |
| Bonthe | 0 | 0 | → |
| Falaba | 0 | 2 | ↑ |
| Kailahun | 3 | 3 | → |
| Kambia | 2 | 3 | ↑ |
| Karene | 2 | 1 | ↓ |
| Kenema | 2 | 1 | ↓ |
| Koinadugu | 1 | 3 | ↑ |
| Kono | 7 | 2 | ↓ |
| Moyamba | 0 | 1 | ↑ |
| Port Loko | 4 | 3 | ↓ |
| Pujehun | 4 | 2 | ↓ |
| Tonkolili | 0 | 5 | ↑ |
| Western Rural | 0 | 1 | ↑ |
| Western Urban | 0 | 0 | → |
| Total | 30 | 30 | → |

Week three of 2024 reported the same number of snake bite cases compared to week three of 2023 but with four deaths related to snake bite. The deaths are from Pujehun, Port Loko, Bo and Bombali districts. The highest number of cases were reported from Tonkolili district. Total reported cases since the start of the year is thirty (30).

NATIONAL WEEKLY EPIDEMIOLOGICAL BULLETIN PRODUCTION TEAM



Editor: Charles Keimbe



Publisher: Mr. Harold Thomas



Data Analyst: Mr. Samba Kamara