



# 20 24



**WEEK 01**

## GOVERNMENT OF SIERRA LEONE MINISTRY OF HEALTH NATIONAL PUBLIC HEALTH AGENCY

**WEEK 01: 1st — 7th January, 2024**

### The National Public Health Agency Sierra Leone (NPHA-SL)

#### Launching

- The Directorate of Health Security and Emergencies responsible for detection, and response to public health threats and emergencies has been transformed to a National Public Health Agency
- On the **14th December 2023**, HE the president of Sierra Leone Launched the National Public Health Agency (NPHA).
- The NPHA being a semi-autonomous body is charged with the responsibility of ensuring that public health threats and emergencies are respond to in a time-



*The NPHA Sierra Leone is a science-based government organization established to address public health concerns and ensure global health security compliance. This agency represents a crucial step towards a stronger and more resilient public health system in Sierra Leone*

#### Our Vision

*Is to become a leading public health centre of excellence, advancing health security throughout Sierra Leone*

#### Our Mission

*Is to protect the health of Sierra Leoneans through evidence-based, multidisciplinary approaches that predict, prevent, detect, and respond to public health threats and emergencies in a timely and effective manner*

#### Our Core Values:

*Ethics and integrity*

*Transparency*

*Accountability*

*Equity*

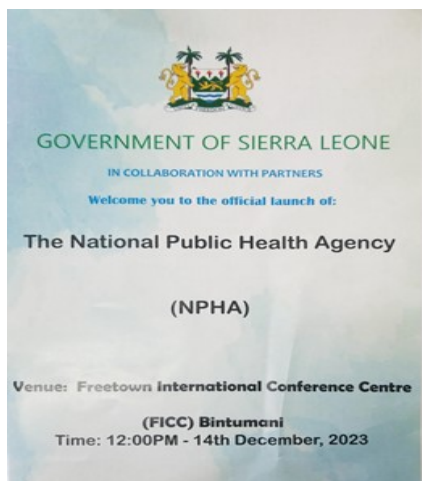
*Partnership*

*Quality*

*Productivity*

*Innovation*

*Gender equality*



# The Executive Director National Public Health Agency's New year message and words of inspiration to the management and staff of NPHA



## Embracing a Healthier Future in Sierra Leone

Fellow Sierra Leoneans,

As we embark on the promising journey of 2024, I extend my heartfelt greetings to each one of you. Let us bid farewell to the challenges of the past and welcome the myriad opportunities that lie ahead. Together, as a united country, we possess the collective power to envision a Sierra Leone that is not only healthier but also resilient—a nation where public health thrives, and society flourishes, even in the face of adversities.

Our shared aspiration is to position Sierra Leone as a pioneering hub for public health, ensuring the safety and well-being of all its citizens. In the upcoming year, I warmly invite everyone, including our dedicated ministries, various departments and agencies, invaluable partners, communities, and the media, to come together in the noble pursuit of a healthier Sierra Leone. Let us collaboratively construct a robust and inclusive healthcare system, leaving no one behind.

Your unwavering support, active engagement, and steadfast commitment to prioritizing health will serve as the driving force propelling us towards success.

Together, let us embrace unity, resilience, and compassion as we navigate this transformative journey. May the New Year usher in a wave of good health, joy, and prosperity for you and your loved ones.

Wishing you all a joyful New Year!


With warm regards,

Brig. Gen. Prof. Foday Sahr

Executive Director, National Public Health Agency, Sierra Leone

 <https://www.facebook.com/NPHASL>

 <https://twitter.com/slnpha>

 [www.npha.gov.sl](http://www.npha.gov.sl)

## KEY SURVEILLANCE PRIORITY DISEASE AND 117 CALL CENTRE HIGHLIGHTS FOR THE WEEK

### Disease specific report Highlights

- **Anthrax:** One (1) case of suspected Anthrax was reported from WAU district. The case was investigated and sample sent to the CPHRL for confirmation
- **Measles:** Two (2) cases of measles were reported this week. All of the cases were under five years of age from Port Loko and WAU (1) each per district. The cases were investigated and samples sent to CPHRL for confirmatory shipment
- **Animal Bite (Dog):** Twenty-four (24) Dog bite cases with one death were reported this week. The death was from WAU. Of the cases, two were under five years and twenty-two were above five years. The death was from WAU. The highest number of cases were from Bombali (5), WAU (4), Kambia (3)
- **Animal Bite (Snake):** Eleven (11) Snake bite cases with two deaths were reported this week. The deaths were from Bombali and Pujehun districts. All of the cases were above five years of age. The highest number of cases were from Port Loko and Tonkolili (2) each per district.
- **Maternal death:** Four (4) maternal deaths were reported from Bo, Kailahun, Karene and Moyamba (1) each per district.
- **Yellow Fever :** Five (5) suspected cases of Yellow Fever were reported this week. All of the cases were above five years of age and were from Bonthe and WAU (2) each per districts, Kambia (1). The cases were investigated and samples sent to CPHRL for confirmation
- **Acute Viral Hemorrhagic Fever (AVHF):** One (1) case of suspected AVHF was reported this week from Kenema district. The cases were investigated and samples sent to CPHRL for confirmation and all tested negative for AVHF.
- **Bacterial Meningitis:** One (1) case of suspected Meningitis from WAU district. No sample was collected for laboratory confirmation

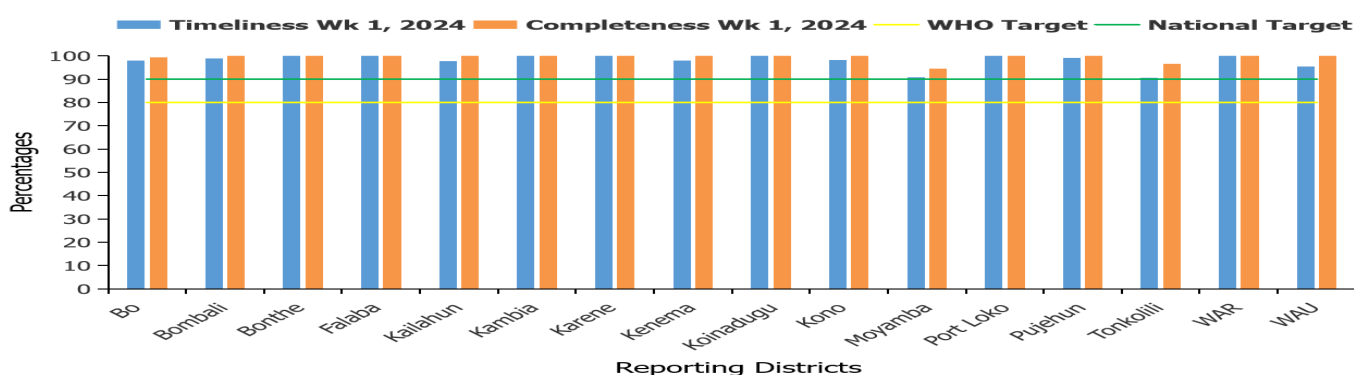
### 117 Call Centre Highlights

- **Pneumonia:** Eight (8) calls related to Pneumonia were made this week countrywide. All of the cases were aged above five years. Bo district reported (4) while WAU and WAR (2) each per district
- **Perinatal Deaths:** Two (2) calls related to Perinatal deaths were made this week of which, stillbirth (1) and neonatal death (1) from WAU and Bo districts.

### 117 Call Summary for epi week 1, 2024

- A total of 9,067 calls were received and responded to, out of which 8,964 (98.9%) were prank calls and 103 (1.1%) were signals
- Out of the total signals received:
  - Death 94 (91.3%)
  - Health Emergencies 6 (5.8%): Dog Bite 1, Snake 1, & Requesting Ambulatory Service 4 (RTA 3, Maternal Emergency 1)
  - Sick 1 (1.0%)
  - Referral Call 2 (1.9): Fire Accident 2

## Health Facility Timeliness & Completeness of Weekly report by district, (Epi week 1, 2024)

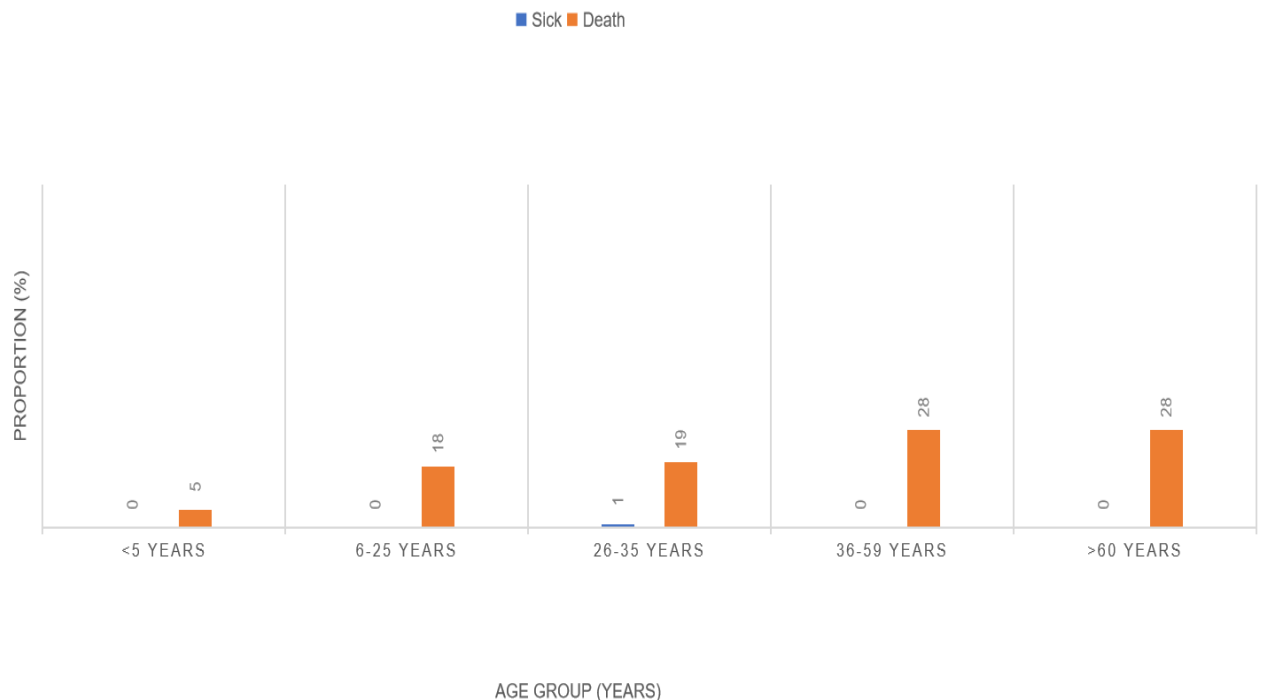


For week 1 of 2024, 16 out of 16 districts achieved both the WHO and national targets for timeliness and completeness

## Updates from the samples of suspected cases reported for this week

- **Anthrax:** A case of suspected Cutaneous Anthrax from WAU. Sample was collected and sent to CPHRL for confirmation. The result is pending
- **Measles:** Two suspected cases of Measles this week. All samples collected and sent to the CPHRL. The TAT for measles in country is seven days. The results are pending
- **Yellow fever:** Five suspected cases of Yellow fever reported this. All samples collected and sent to CPHRL for confirmation and results are still pending. The turn around time (TAT) for yellow fever samples in country is seven days
- **Acute Viral Haemorrhagic Fever (AVHF):** One (1) case of suspected AVHF was reported this week. The sample was collected and sent to Kenema regional & Jui P3 Lab, sample later tested Negative for Lassa EVD & Marburg
- **Bacterial Meningitis:** One case of suspected bacterial Meningitis. No sample was collected for laboratory confirmation. There is a challenge with reagents for testing and expertise in sample collection.

## 117 Sick and death signals by age groups (n=1) (n=94)



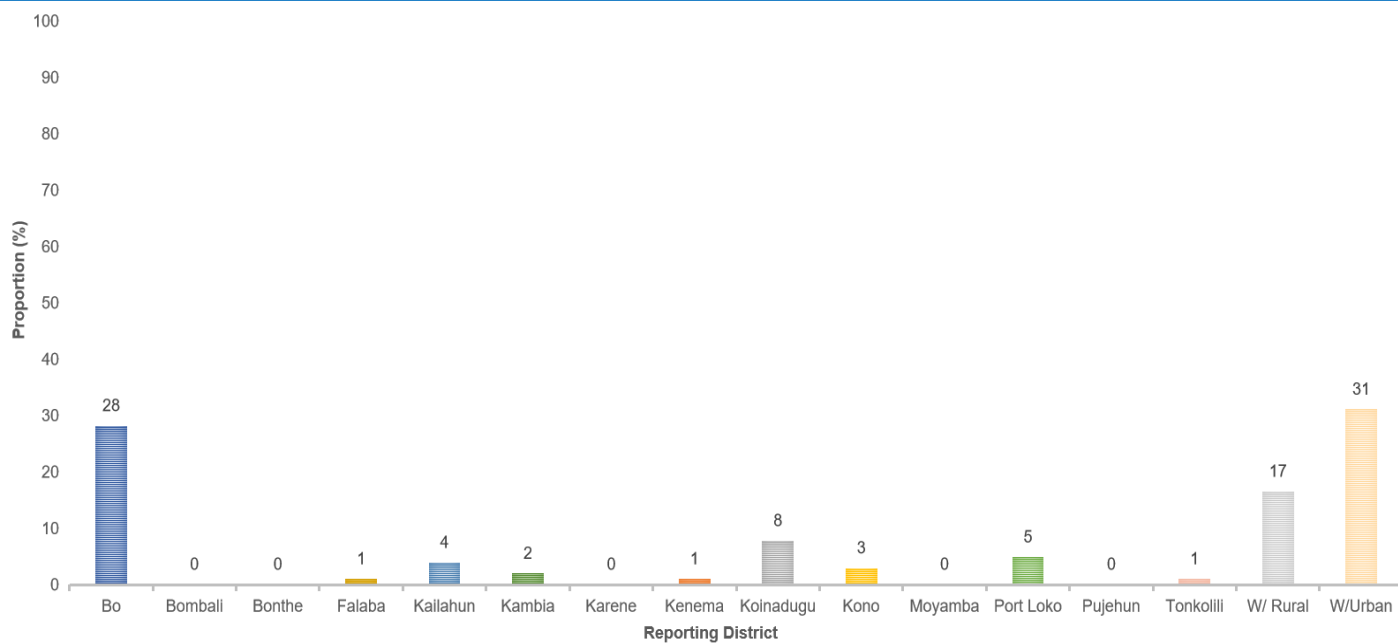
For week one of 2024, a total of 95 call signals for sick and death were made of which 94 were related to deaths and one was for sick. The age groups of 36 –59 and above 60 had a higher proportion of death reported and the least was under fives. The sick reported was for the age group of 26-35years

## Submission of report by health facility via phone call, SMS, paper form or Mobile internet (Epi week 1, 2024)

District	# Reported HFs	Call	Paper forms	SMS	Mobile SMS	Mobile internet	Mobile Total	Total Submission	% Mobile Submission
Bo	150	61	0	22	10	56	66	149	44
Bombali	96	0	0	6	10	79	89	95	94
Bonthe	87	41	0	0	5	41	46	87	53
Falaba	50	25	0	0	7	18	25	50	50
Kailahun	91	0	0	0	7	84	91	91	100
Kambia	74	0	0	0	9	65	74	74	100
Karene	62	0	0	11	6	45	51	62	82
Kenema	142	0	0	47	22	73	95	142	67
Koinadugu	67	0	0	45	3	19	22	67	33
Kono	114	16	0	56	5	36	41	113	36
Moyamba	110	75	0	0	10	20	30	105	29
Port Loko	118	0	0	0	51	67	118	118	100
Pujehun	104	0	0	2	7	95	102	104	98
Tonkolili	117	21	0	0	23	66	89	110	81
WAR	78	6	25	0	8	39	47	78	60
WAU	107	0	0	0	15	92	107	107	100
<b>Cumulative</b>	<b>1567</b>	<b>245</b>	<b>25</b>	<b>189</b>	<b>198</b>	<b>895</b>	<b>1093</b>	<b>1552</b>	<b>70</b>
<b>KEY:</b>		<b>90 - 100</b>		<b>75 - 89</b>		<b>0 - 74</b>			

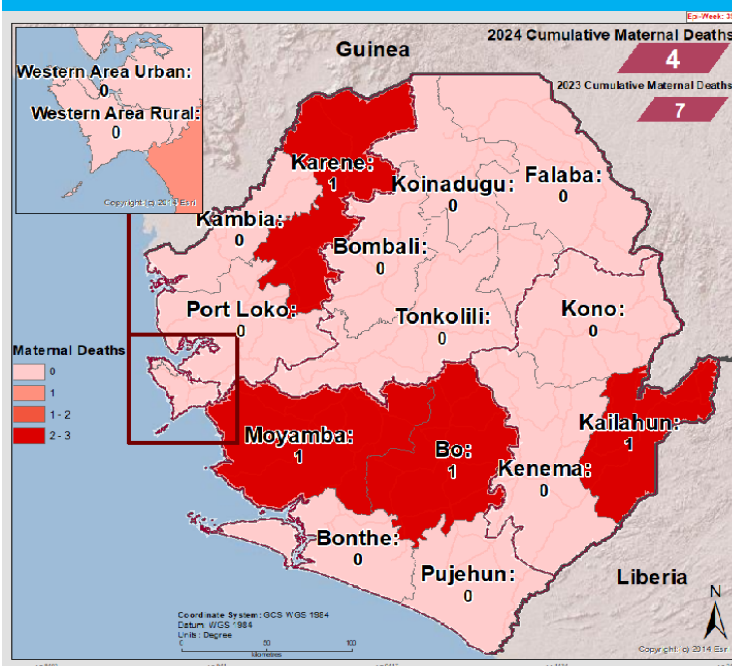
For week one of 2024, a total of 1,567 facilities reported countrywide using various means of reporting. Mobile SMS and mobile internet were used exclusively by four districts (Kailahun, Kambia, Port Loko and WAU). Only one district (WAR) used paper based reporting of which, 25/78 (32%) of the facilities reported using paper. The country has moved from paper based reporting to electronic since 2018

## 117 Call signals by reporting districts (N=103)



For week one of 2024, greater proportion of call signals were from WAU, closely followed by Bo and then WAR districts, 5/16 (31%) districts made zero call.

## Cumulative Maternal Deaths reported by district (Epi Week 1, 2024)



## Compared Maternal Deaths reported by district (Epi Week 1, 2023 & 2024)

District	2023 Week 1	2024 Week 1	
Bo	0	1	↑
Bombali	0	0	→
Bonthe	1	0	↓
Falaba	1	0	↓
Kailahun	0	1	↑
Kambia	0	0	→
Karene	0	1	↑
Kenema	0	0	→
Koinadugu	0	0	→
Kono	1	0	↓
Moyamba	1	1	→
Port Loko	1	0	↓
Pujehun	0	0	→
Tonkolili	0	0	→
Western Rural	0	0	→
Western Urban	2	0	↓
<b>Total</b>	<b>7</b>	<b>4</b>	↓

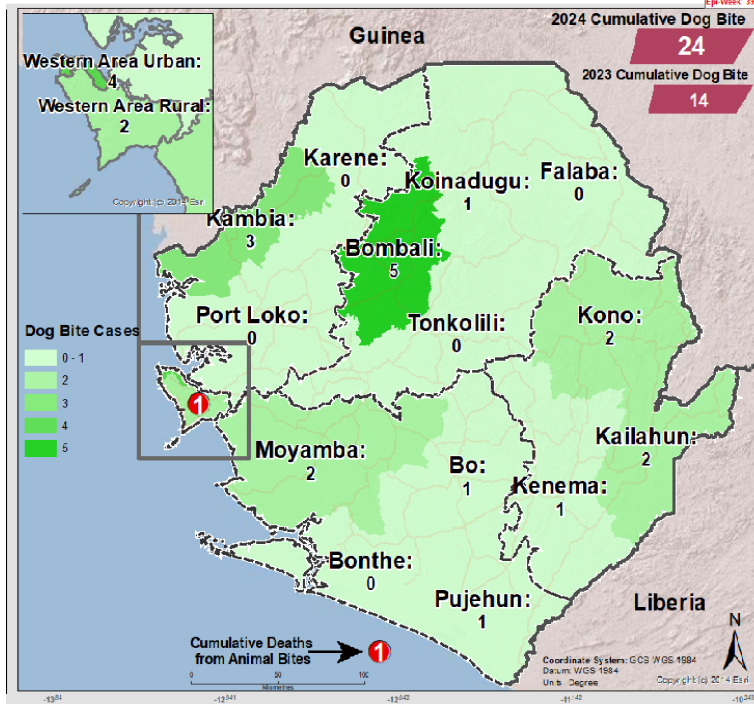
In comparison with week one of 2023, 2024 has reported less maternal deaths for the same period. Four deaths were reported this week from four districts. Total reported death for the week is four.

## Maternal Deaths reported by district and Place of Occurrence (Epi Week 1, 2024)

District	Health Facility	No. of Death
Bo	Bo Govt. hospital	1
Kailahun	Kailahun Govt. hospital	1
Karene	Kamakwie Wesleyan Hospital	1
Moyamba	Bumpetoke (Kargboro) CHP	1
<b>Total</b>		<b>4</b>

In week of 2024, a total of four maternal deaths were reported from four districts. Of these deaths, three took place in hospitals and one at PHU. Maternal death at PHU level requires investigations especially with the delays and at what stage the delay took place

## Cumulative Dog Bite cases reported by district (Epi Week 1, 2024)

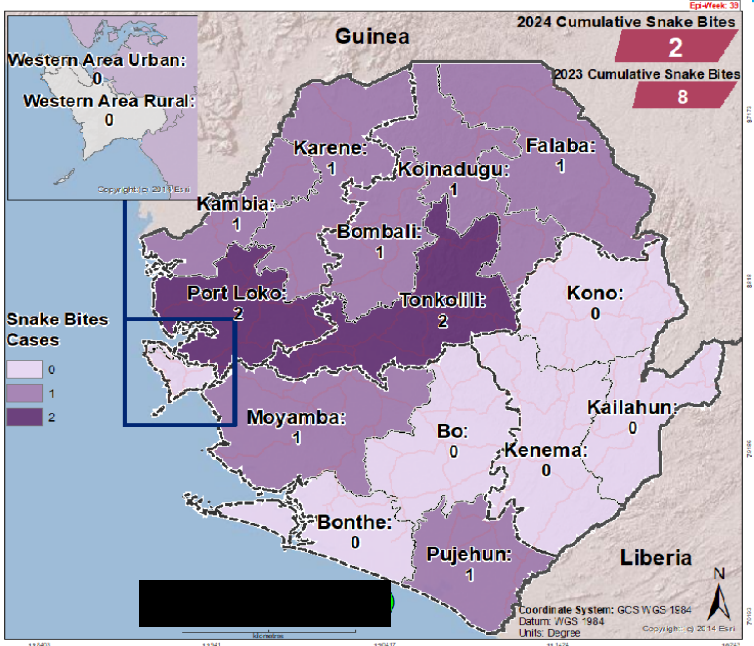


## Compared Dog Bite cases reported by district (Epi Week 1, 2023 & 2024)

District	2023 Week 1	2024 Week 1
Bo	0	1
Bombali	0	5
Bonthe	0	0
Falaba	1	0
Kailahun	1	2
Kambia	0	3
Karene	0	0
Kenema	1	1
Koinadugu	0	1
Kono	5	2
Moyamba	0	2
Port Loko	4	0
Pujehun	0	1
Tonkolili	0	0
Western Rural	0	2
Western Urban	2	4
<b>Total</b>	<b>14</b>	<b>24</b>

Week one of 2024 has reported more dog bite cases including one death related to dog bite compared to 2023 same period. The highest number of cases were reported from Bombali district and the death was from WAU district. Total reported cases for the week is twenty-four

## Cumulative Snake Bite cases reported by district (Epi Week 1, 2024)



## Compared Snake Bite cases reported by district (Epi Week 1, 2023 & 2024)

District	2023 Week 1	2024 Week 1	
Bo	0	0	—
Bombali	3	1	↓
Bonthe	0	0	—
Falaba	0	1	↑
Kailahun	1	0	↓
Kambia	0	1	↑
Karene	1	1	—
Kenema	1	0	↓
Koinadugu	0	1	↑
Kono	1	0	↓
Moyamba	0	1	↑
Port Loko	0	2	↑
Pujehun	1	1	—
Tonkolili	0	2	↑
Western Rural	0	0	—
Western Urban	0	0	—
<b>Total</b>	<b>8</b>	<b>11</b>	↑

Week one of 2024 has reported more snake bite cases including two death related to snake bite compared to 2023 same period. The highest number of cases were reported from Port Loko and Tonkolili districts and the deaths were from Bombali and Pujehun district. Total reported cases for the week is eleven

**NATIONAL WEEKLY BULLETIN PRODUCTION TEAM**



**Editor: Charles Keimbe**



**Publisher: Mr. Harold Thomas**



**Data Analyst: Mr. Samba Kamara**