



WEEK 04

20  24



GOVERNMENT OF SIERRA LEONE
MINISTRY OF HEALTH
NATIONAL PUBLIC HEALTH AGENCY

NATIONAL WEEKLY EPIDEMIOLOGICAL BULLETIN

WEEK 04: 22nd — 28th January, 2024



The Executive Director National Public Health Agency's New year message and words of inspiration to the management and staff of NPHA



Embracing a Healthier Future in Sierra Leone

Fellow Sierra Leoneans,

As we embark on the promising journey of 2024, I extend my heartfelt greetings to each one of you. Let us bid farewell to the challenges of the past and welcome the myriad opportunities that lie ahead. Together, as a united country, we possess the collective power to envision a Sierra Leone that is not only healthier but also resilient—a nation where public health thrives, and society flourishes, even in the face of adversities.

Our shared aspiration is to position Sierra Leone as a pioneering hub for public health, ensuring the safety and well-being of all its citizens. In the upcoming year, I warmly invite everyone, including our dedicated ministries, various departments and agencies, invaluable partners, communities, and the media, to come together in the noble pursuit of a healthier Sierra Leone. Let us collaboratively construct a robust and inclusive healthcare system, leaving no one behind.

Your unwavering support, active engagement, and steadfast commitment to prioritizing health will serve as the driving force propelling us towards success.

Together, let us embrace unity, resilience, and compassion as we navigate this transformative journey. May the New Year usher in a wave of good health, joy, and prosperity for you and your loved ones.

Wishing you all a joyful New Year!


With warm regards,

Brig. Gen. Prof. Foday Sahr

Executive Director, National Public Health Agency, Sierra Leone

 <https://www.facebook.com/NPHASL>

 <https://twitter.com/slnpha>

 www.npha.gov.sl

KEY SURVEILLANCE PRIORITY DISEASE AND 117 CALL CENTRE HIGHLIGHTS FOR THE WEEK

Disease specific report Highlights

- **Acute Flaccid Paralysis (AFP):** Nine (9) cases of AFP were reported this week. Of the cases, eight were under fives and one above five years. Kailahun (4), Kambia (3) while Bombali and Bonthe (1) each per district. The cases were investigated and samples sent to CPHRL for confirmatory shipment.
- **Measles:** One (1) case of suspected measles was reported this week. The cases was under five years of age from Port Loko district. Port Loko continue to line list cases based on outbreak protocol.
- **Animal Bite (Dog):** Seventeen (17) Dog bite cases were reported this week. Of the cases, one was under five years and sixteen were above five years. The highest number of cases were from Kono (4) while Bombali and Moyamba (3) each per districts.
- **Animal Bite (Snake):** Five (5) Snake bite cases were reported this week. All of the cases were above five years of age. The cases were from Tonkolili, Kailahun, Port Loko, Pujehun and WAR (1) each per district.
- **Maternal death:** Six (6) maternal deaths were reported from Port Loko (2), while Bo, Pujehun, WAU and WAR (1) each per district.
- **Yellow Fever :** Three (3) suspected cases of Yellow Fever were reported this week. All of the cases were above five years of age and were from Kailahun (2) and Bombali (1) districts. The cases were investigated and samples sent to CPHRL for confirmation
- **Acute Viral Hemorrhagic Fever (AVHF):** Eight (8) cases of suspected AVHFs with one death were reported this week. All of the cases were above fives years. from Kenema (4), Koinadugu (2) while Kailahun and Pujehun (1) each per district. The cases were investigated and samples sent to Kenema regional Lab. for confirmation.
- **Bacterial Meningitis:** Three (3) case of suspected Meningitis with two deaths were reported from WAU. No samples were collected

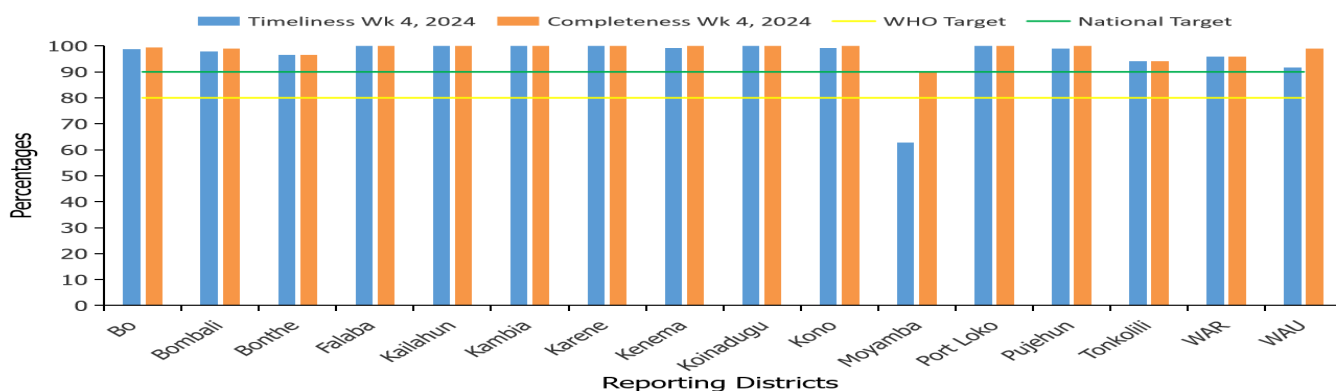
117 Call Centre Highlights

- **Bloody Diarrhoea:** One (1) call related to Bloody Diarrhoea was made this week from Kailahundistrict.
- **Perinatal Deaths:** Nine (9) calls related to Peri-natal deaths were made this week of which, stillbirth (4) and neonatal death (5)
- **Yellow fever:** One (1) call related to suspected yellow fever was mad from Kailahun this week
- **Measles:** Two (2) calls related to Measles were made from Port Loko district this week.

117 Call Summary for epi week 1, 2024

- A total of 9,564 calls were received and responded to, out of which 9,425 (98.5%) were prank calls and 139 (1.5%) were signals
- Out of the total signals received:
 - Death 123 (88.5%)
 - Sick 7 (5.0%)
 - Health Emergencies 9 (6.5%): dog bite 2 and ambulatory service 7

Health Facility Timeliness & Completeness of Weekly report by district, (Epi week 4, 2024)

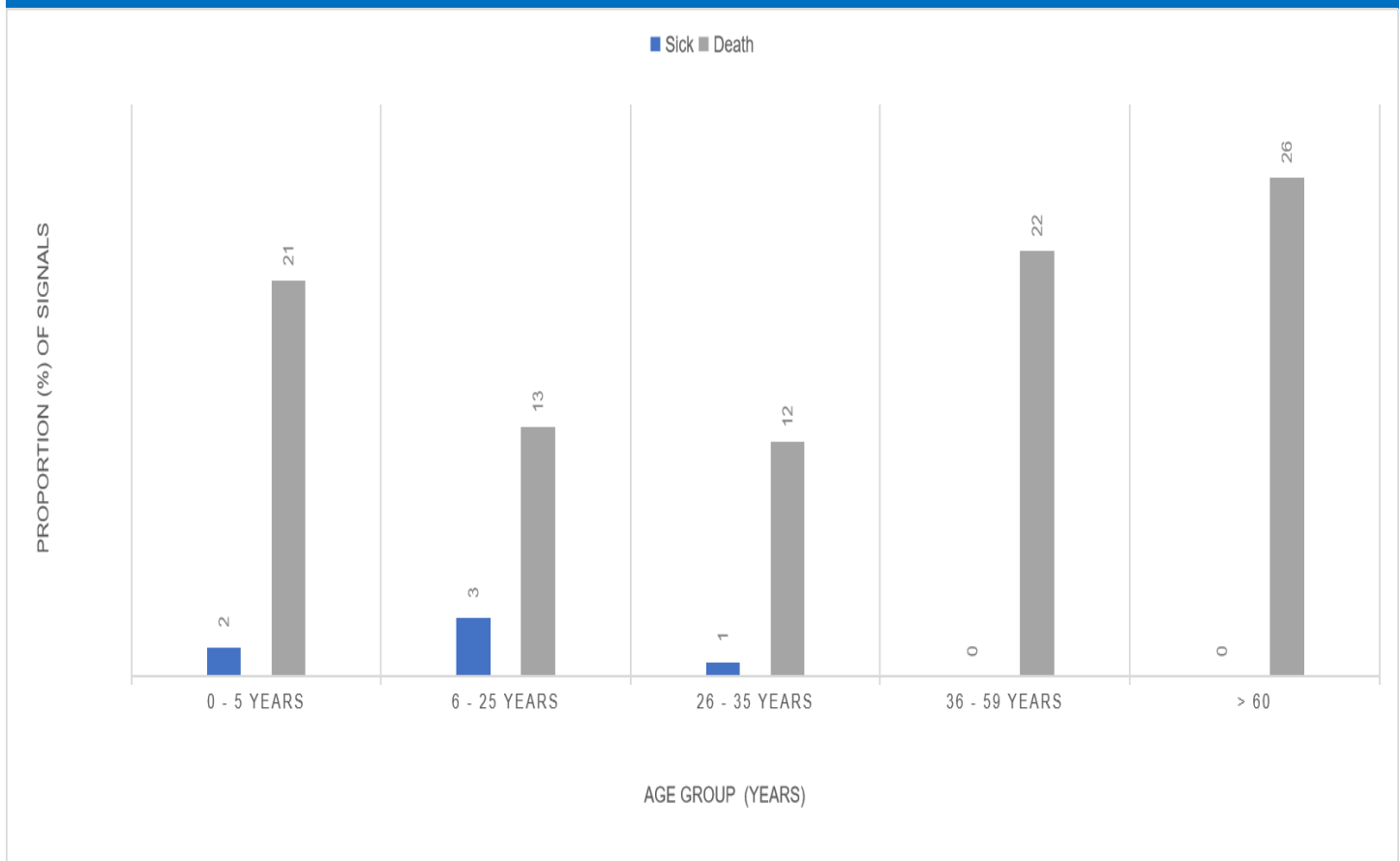


For Week 4 of 2024, 15 out of 16 districts achieved both the WHO and national targets for timelines and completeness while one achieved only WHO target for completeness and could not meet the national targets for timelines and completeness

Updates from the samples of suspected cases reported for this week

- **AFP:** Nine samples collected and sent to CPHRL for confirmatory shipment. The expected turn around time for AFP samples is two weeks after shipment.
- **Yellow fever:** Three suspected cases of Yellow fever reported this. All samples collected and sent to CPHRL for confirmation and results are still pending. The turn around time (TAT) for yellow fever samples in country is seven days
- **Acute Viral Haemorrhagic Fever (AVHF):** Eight cases of suspected AVHF were reported this week. The sample were collected and sent to Kenema regional Lab. All of the samples however tested Negative AVHFs
- **Bacterial Meningitis:** Three cases of suspected bacterial meningitis were reported. No sample was collected for bacterial meningitis confirmation

117 Sick and death signals by age groups, epi week 4, 2024 (n=7) (n=123)



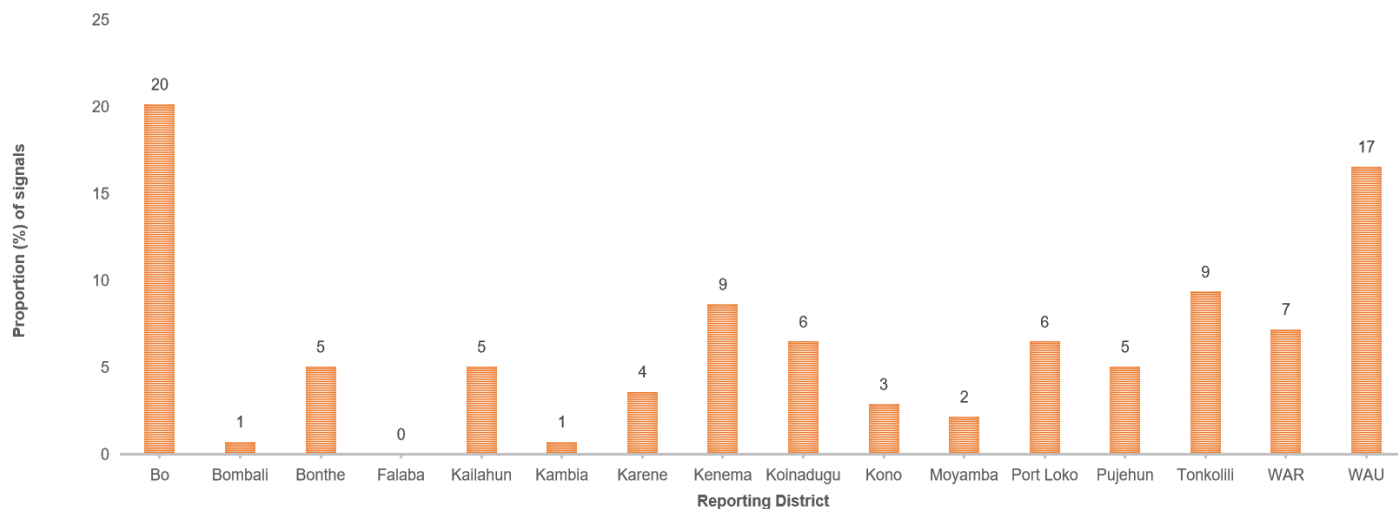
For week four of 2024, a total of 130 call signals for sick and death were made of which 123 were related to deaths and 7 were for sick. The age groups of >60 had a higher proportion of death reported and the least was 26-35years. For the sick cases the age group of 6-25 reported the highest

Submission of report by health facility via phone call, SMS, paper form or Mobile internet (Epi week 4, 2024)

District	#s of Expected HFs	Call	Paper forms	SMS	Mobile SMS	Mobile internet	Mobile Total	Total Submission	% Mobile Submission
Bo	150	77	0	5	7	60	67	149	45
Bombali	97	0	0	5	12	79	91	96	95
Bonthe	89	19	0	19	6	42	48	86	56
Falaba	50	24	0	0	6	20	26	50	52
Kailahun	91	0	0	0	5	86	91	91	100
Kambia	74	0	0	0	8	66	74	74	100
Karene	62	0	1	13	9	39	48	62	77
Kenema	141	0	0	51	19	71	90	141	64
Koinadugu	67	0	0	53	3	11	14	67	21
Kono	114	8	0	71	4	31	35	114	31
Moyamba	110	75	0	0	10	16	26	101	26
Port Loko	118	0	0	0	56	62	118	118	100
Pujehun	104	0	0	1	7	96	103	104	99
Tonkolili	117	41	0	0	19	50	69	110	63
WAR	72	2	7	0	8	54	62	71	87
WAU	108	0	0	0	11	96	107	107	100
Cumulative	1564	246	8	218	190	879	1069	1541	69
KEY:		90 - 100		75 - 89		0 - 74			

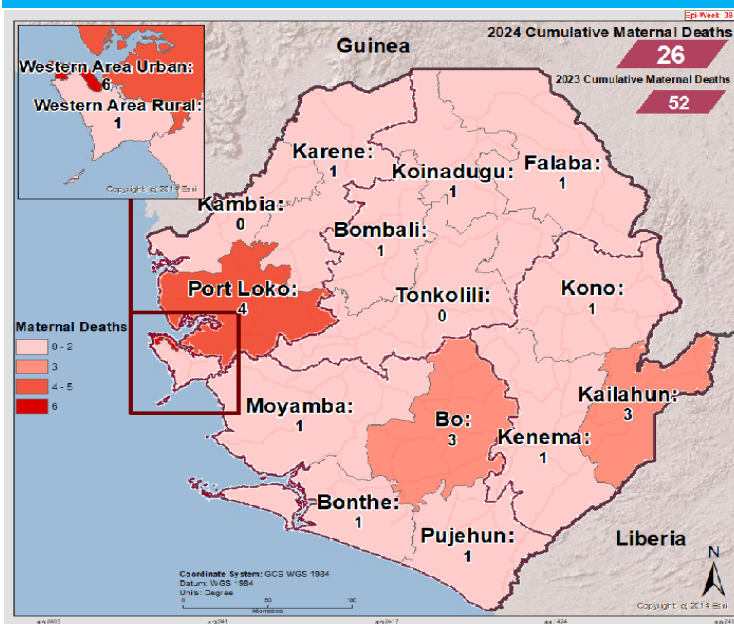
For week four of 2024, a total of 1,541 facilities reported countrywide using various means of reporting. Mobile SMS and mobile internet were used exclusively by four districts (Kailahun, Kambia, WAU and Port Loko). Only one district (WAR) used paper based reporting of which, 9/87 (10%) of the facilities reported using paper. The country has moved from paper based reporting to electronic since 2018

Call signals by reporting districts epi week 4, 2024 (N=139)



For week four of 2024, greater proportion of call signals were from Bo district, closely followed by WAU and then Tonkolili and Kenema districts, 1/16 (6.2%) of districts made zero call.

Cumulative Maternal Deaths reported by district (Epi Week 4, 2024)



Compared Maternal Deaths reported by district (Epi Week 1- 4, 2023 & 2024)

District	2023 Week 1 - 4	2024 Week 1 - 4	
Bo	7	3	↓
Bombali	2	1	↓
Bonthe	4	1	↓
Falaba	3	1	↓
Kailahun	3	3	↔
Kambia	3	0	↓
Karene	1	1	↔
Kenema	2	1	↓
Koinadugu	0	1	↑
Kono	5	1	↓
Moyamba	3	1	↓
Port Loko	2	4	↑
Pujehun	3	1	↓
Tonkolili	2	0	↓
Western Rural	2	1	↓
Western Urban	10	6	↓
Total	52	26	↓

In comparison with week four of 2023, 2024 has reported less maternal deaths for the same period. Six deaths were reported this week from five districts. Two districts (Kambia and Tonkolili) have not reported any maternal death in the past four weeks. Total maternal deaths reported since the start of the year is twenty-six (26).

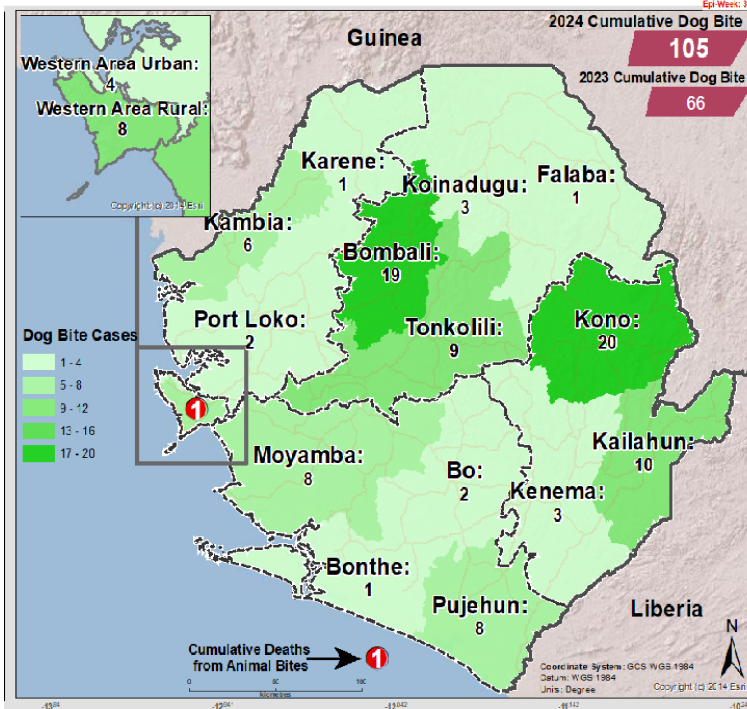
Maternal Deaths reported by district and Place of Occurrence (Epi Week 4, 2024)

District	Health Facility	No. of Death
Bo	Bo Govt. hospital	1
Port Loko	Port Loko Govt. hospital	1
	Komrabai (Ngolla) CHP	1
Pujehun	Bumban CHP	1
WAU	PCM Hospital	1
WAR	Waterloo CHC	1
Total		6

In week Four of 2024, a total of six maternal deaths were reported from five districts. Of these deaths, five took place in hospitals and one at PHU. Maternal death at PHU level requires investigations especially with the delays and at what stage the delay took place. **Note Waterloo CHC is considered a hospital based facility**

Cumulative Dog Bite cases reported by district (Epi Week 4, 2024)

Compared Dog Bite cases reported by district (Epi Week 1- 4, 2023 & 2024)

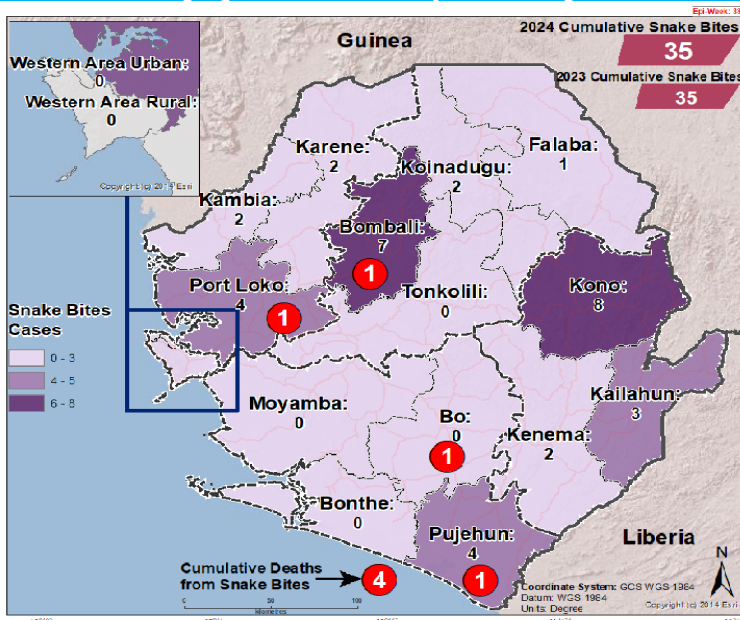


District	2023 Week 1 - 4	2024 Week 1 - 4	
Bo	0	2	↑
Bombali	11	19	↑
Bonthe	1	1	→
Falaba	1	1	→
Kailahun	7	10	↑
Kambia	1	6	↑
Karene	1	1	→
Kenema	5	3	↓
Koinadugu	1	3	↑
Kono	16	20	↑
Moyamba	1	8	↑
Port Loko	12	2	↓
Pujehun	4	8	↑
Tonkolili	0	9	↑
Western Rural	2	8	↑
Western Urban	3	4	↑
Total	66	105	↑

Week four of 2024 has reported more dog bite cases including one death related to dog bite compared to 2023 same period. The highest number of cases were reported from Bombali Kono and Kailahun and Tonkolili districts and the death was from WAU district. Total reported cases since the start of the year is 105.

Cumulative Snake Bite cases reported by district (Epi Week 4, 2024)

Compared Snake Bite cases reported by district (Epi Week 1- 4, 2023 & 2024)



District	2023 Week 1 - 4	2024 Week 1 - 4	
Bo	0	1	↑
Bombali	7	2	↓
Bonthe	0	0	→
Falaba	1	2	↑
Kailahun	3	4	↑
Kambia	2	3	↑
Karene	2	1	↓
Kenema	2	1	↓
Koinadugu	2	3	↑
Kono	8	2	↓
Moyamba	0	1	↑
Port Loko	4	4	→
Pujehun	4	3	↓
Tonkolili	0	6	↑
Western Rural	0	2	↑
Western Urban	0	0	→
Total	35	35	→

Week four of 2024 reported the same number of snake bite cases compared to week three of 2023 but with four deaths related to snake bite. The deaths are from Pujehun, Port Loko, Bo and Bombali districts. The highest number of cases were reported from Kono and Bombali district. Total reported cases since the start of the year is thirty-five (35).

NATIONAL WEEKLY EPIDEMIOLOGICAL BULLETIN PRODUCTION TEAM



Editor: Charles Keimbe



Publisher: Mr. Harold Thomas



Data Analyst: Mr. Samba Kamara