



WEEK 09

20  24



**GOVERNMENT OF SIERRA LEONE**  
**MINISTRY OF HEALTH**  
**NATIONAL PUBLIC HEALTH AGENCY**

# ***NATIONAL WEEKLY EPIDEMIOLOGICAL BULLETIN***

**WEEK 09: 26th Feb — 3rd Mar, 2024**



# KEY SURVEILLANCE PRIORITY DISEASE AND 117 CALL CENTRE HIGHLIGHTS FOR THE WEEK

## Disease specific report Highlights

- **Acute Flaccid Paralysis (AFP):** Four (4) cases of AFP were reported this week. The cases were under five years of age from Kailahun, Port Loko, Pujehun and WAU (1) each per districts. The cases were investigated and samples sent to CPHRL for confirmatory shipment
- **Measles:** Thirteen (13) cases of measles were reported this week. Of the cases eleven were under five and two were above five years of age from Port Loko (11), WAR (2). The cases were investigated and samples sent to CPHRL for confirmation
- **Animal Bite (Dog):** Nineteen (19) Dog bite cases were reported this week. All of the cases were above five years of age. The highest number of cases were from Bombali (7), WAR (3), Pujehun (2) districts.
- **Animal Bite (Snake):** Eleven (11) Snake bite cases with one death reported this week. All of the cases were above five years. The highest number of cases were from Port Loko (3), Kailahun and Koinadugu (2) each per district
- **Maternal death:** Seven (7) maternal deaths were reported from WAU (2), Bo, Kailahun, Kenema, Tonkolili and WAR (1) each per district
- **Yellow Fever :** Two (2) suspected cases of Yellow Fever were reported this week from Bonthe and WAR (1) district. All of the cases were above five years. The cases were investigated and samples sent to CPHRL for confirmation
- **Acute Viral Hemorrhagic Fever (AVHF):** Twelve (12) cases of suspected AVHF with one death were reported this week. The death was from Kenema. Of the cases five were under five and seven were above five years from Kenema (9), Tonkolili and WAU (1) each per district. The cases were investigated and samples sent to CPHRL for confirmation and all tested negative for AVHF.
- **Suspected Monkey Pox:** One case of suspected Monkey pox from Karene was investigated this week with sample collected
- **Anthrax:** One case of suspected Anthrax from WAU was investigated this week with sample collected

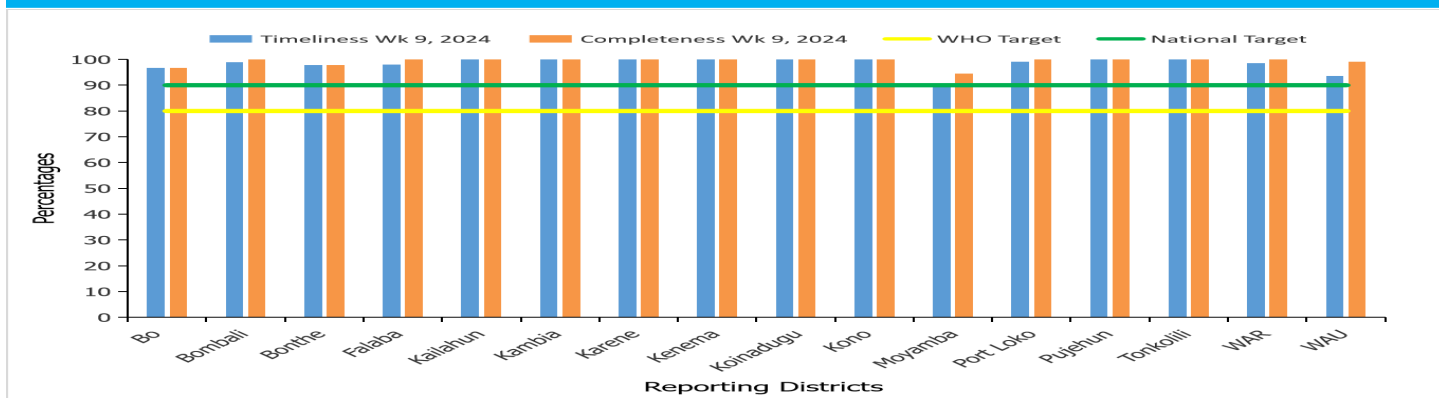
## 117 Call Centre Highlights

- 6 Bloody Diarrhea [Age:>5 yrs.]
  - 6 Kailahun
- 4 Suspected measles
  - 2 Karene [Age:<5 yrs.]
  - 2 Port Loko [Age: <5Yrs. & >5 yrs.]
- 15 Perinatal death (4 Stillbirths & 11 neonatal death)
  - 4 Stillbirth (2 each Bo & Bonthe)
  - 11 Neonatal death (1 Bo, 11 Bonthe)
- 2 Maternal Death

## Call Summary for epi week 9, 2024

- A total of 7,489 calls were received and responded to, out of which 7,334 (97.9%) were prank calls and 155 (2.1%) were signals
- Out of the total signals received:
  - Death 128 (82.6%)
  - Health Emergencies 10 (6.5%): snake bite 5 & request for ambulatory service 5
  - Sick 12 (7.7%)
  - Health Information 3 (1.9%): rabies inquiries 2 & rumour 1
  - Referral Call 2 (1.3%): fire force 2

## Health Facility Timeliness & Completeness of Weekly report by district, (epi week 9, 2024)

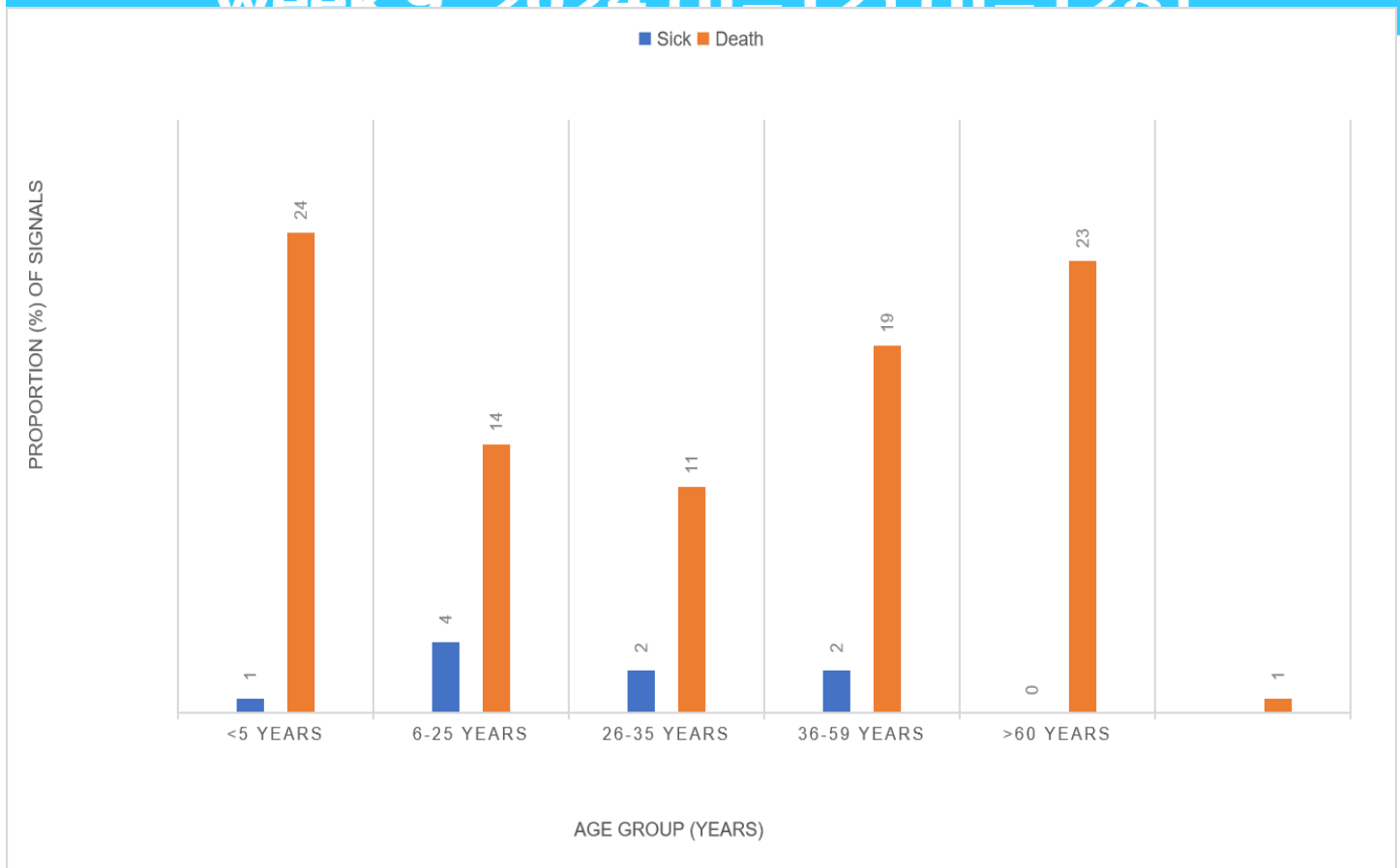


For Week 9 of 2024, 16 out of 16 districts achieved both the WHO and national targets for timeliness and completeness

## Updates from the samples of suspected cases reported for week 8

- **Acute Viral Haemorrhagic Fever (AVHF):** Twelve Samples of suspected AVHF were sent to the Lab. this week. The samples were collected and sent to Kenema regional Lab. All of the samples however tested Negative AVHFs
- **Measles:** Two out of 13 samples of suspected measles were sent to the Lab. From Port Loko, Karene and Pujehun districts. The turn around time for measles sample is seven days
- **Yellow fever:** Two samples of suspected yellow fever were sent to the Lab. For confirmation. The TAT for yellow fever is seven days
- **Anthrax:** One sample of suspected Anthrax from WAU was sent to the Lab. The sample tested negative
- **Suspected Monkey Pox:** One sample of suspected Monkey pox from Karene was sent to the Lab. Tested negative

## Sick and death signals by age groups, epi week 9, 2024 (n=12) (n=128)



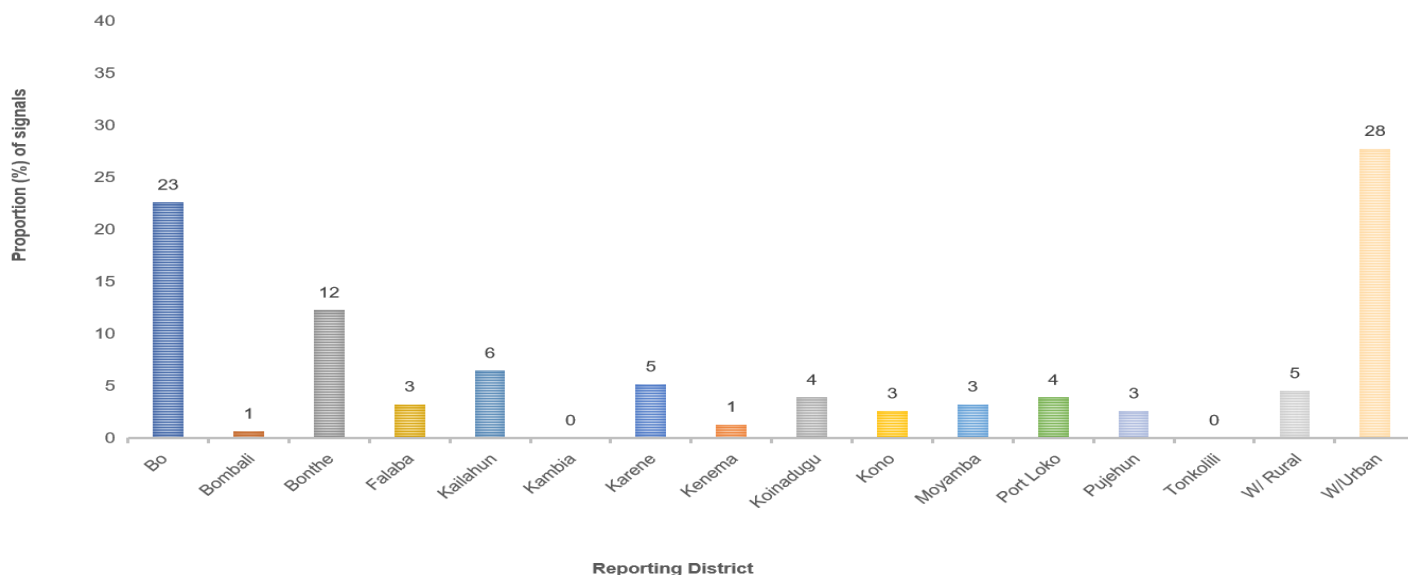
For week nine of 2024, a total of 140 call signals for sick and death were made of which 128 were related to deaths and 12 were for sick. The age group of < 5 had a higher proportion of death reported and the least was 26-35years. For the sick cases the age group of 6-25 reported the highest

## Submission of report by health facility via phone call, SMS, paper form or Mobile internet (epi week 9, 2024)

District	#s of Expected HFs	Call	Paper forms	SMS	Mobile SMS	Mobile internet	Mobile Total	Total Submission	% Mobile Submission
Bo	150	0	0	77	8	62	70	147	48
Bombali	97	0	0	4	6	87	93	97	96
Bonthe	89	1	0	15	4	67	71	87	82
Falaba	50	25	0	0	8	16	24	49	49
Kailahun	91	0	0	0	3	88	91	91	100
Kambia	74	0	0	0	2	72	74	74	100
Karene	62	0	0	7	4	51	55	62	89
Kenema	141	0	0	47	14	80	94	141	67
Koinadugu	67	0	0	54	3	10	13	67	19
Kono	114	0	0	74	4	36	40	114	35
Moyamba	110	77	0	0	5	23	28	105	27
Port Loko	118	0	0	1	50	67	117	118	99
Pujehun	104	0	0	1	9	94	103	104	99
Tonkolili	117	50	0	0	18	49	67	117	57
WAR	72	3	5	0	5	59	64	72	89
WAU	108	0	0	0	6	101	107	107	100
<b>Cumulative</b>	<b>1564</b>	<b>156</b>	<b>5</b>	<b>280</b>	<b>149</b>	<b>962</b>	<b>1111</b>	<b>1552</b>	<b>72</b>
<b>KEY:</b>		<b>90 - 100</b>		<b>75 - 89</b>		<b>0 - 74</b>			

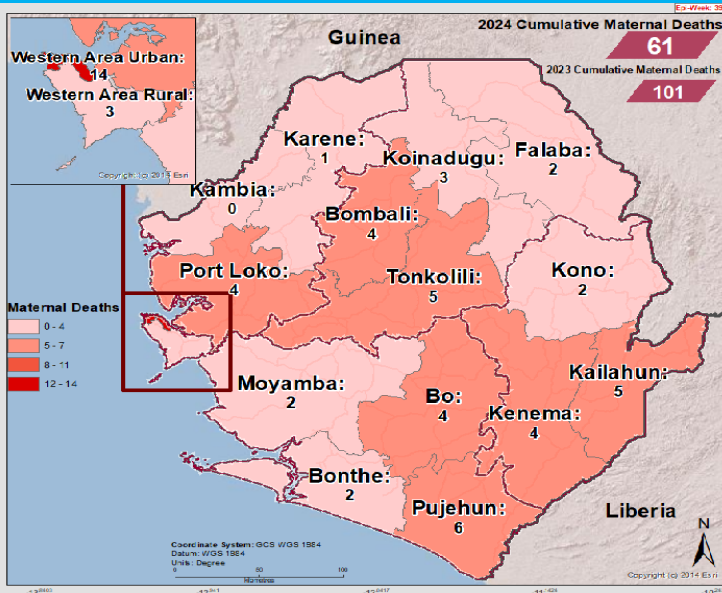
For nine of 2024, a total of 1,564 facilities reported countrywide using various means of reporting. Mobile SMS and mobile internet were used exclusively by three districts (Kailahun, Kambia, and Port Loko). Only one district (WAR) used paper based reporting of which, 3/72 (4.2%) of the facilities reported using paper. The country has moved from paper based reporting to electronic since 2018

## Call signals by reporting districts epi week 9, 2024 (N=155)



For week nine of 2024, greater proportion of call signals were from WAU district closely followed by Bo district, then Bonthe district. 2/16 (12.5%) of districts made zero call.

## Cumulative Maternal Deaths reported by district (epi Week 9, 2024)



## Compared Maternal Deaths reported by district (epi Week 1- 9, 2023 & 2024)

District	2023 Week 1 - 9	2024 Week 1 - 9	
Bo	19	4	↓
Bombali	3	4	↑
Bonthe	7	2	↓
Falaba	3	2	↓
Kailahun	4	5	↑
Kambia	7	0	↓
Karene	3	1	↓
Kenema	4	4	↔
Koinadugu	0	3	↑
Kono	8	2	↓
Moyamba	3	2	↓
Port Loko	4	4	↔
Pujehun	5	6	↑
Tonkolili	9	5	↓
Western Rural	3	3	↔
Western Urban	19	14	↓
<b>Total</b>	<b>101</b>	<b>61</b>	↓

In comparison with week nine of 2023, week nine 2024 has report less maternal deaths for the same period. Seven deaths were reported this week from six districts. One district (Kambia) has not reported any maternal death in the past nine weeks. Total maternal deaths reported since the start of the year is sixty-one (61).

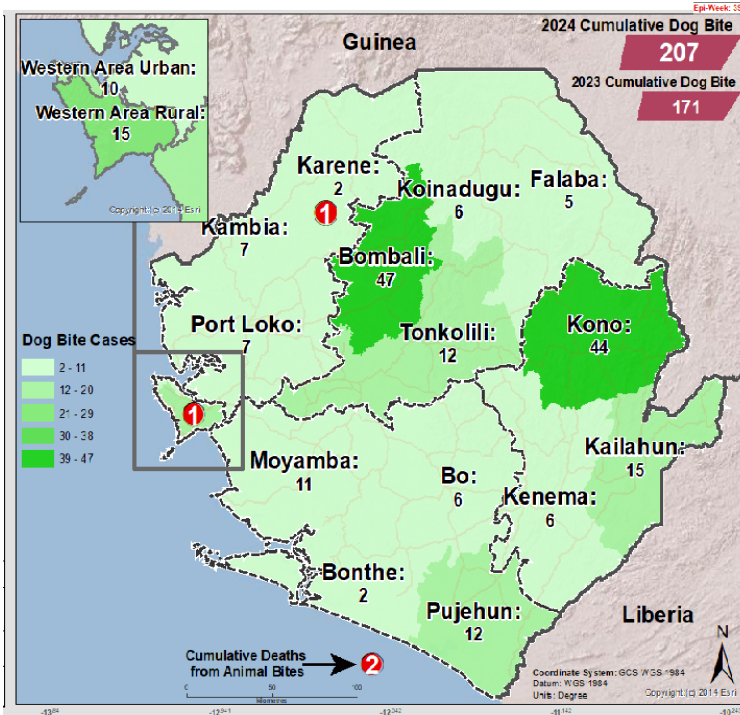
## Maternal Deaths reported by district and Place of Occurrence (epi Week 9, 2024)

District	Health Facility	No. of Death
WAU	PCM. Hospital	2
Bo	Bo Gov. hospital	1
Kenema	Kenema Gov. Hospital	1
Kailahun	Kailahun Gov. Hospital	1
Tonkolili	Lion Heart Hospital	1
WAR	Hastings CHC	1
<b>Total</b>		<b>7</b>

In week nine of 2024, a total of seven maternal deaths were reported from six districts. Six of the maternal deaths were from hospitals and one was from a PHU

## Cumulative Dog Bite cases reported by district (epi Week 9, 2024)

## Compared Dog Bite cases reported by district (epi Week 1- 9, 2023 & 2024)

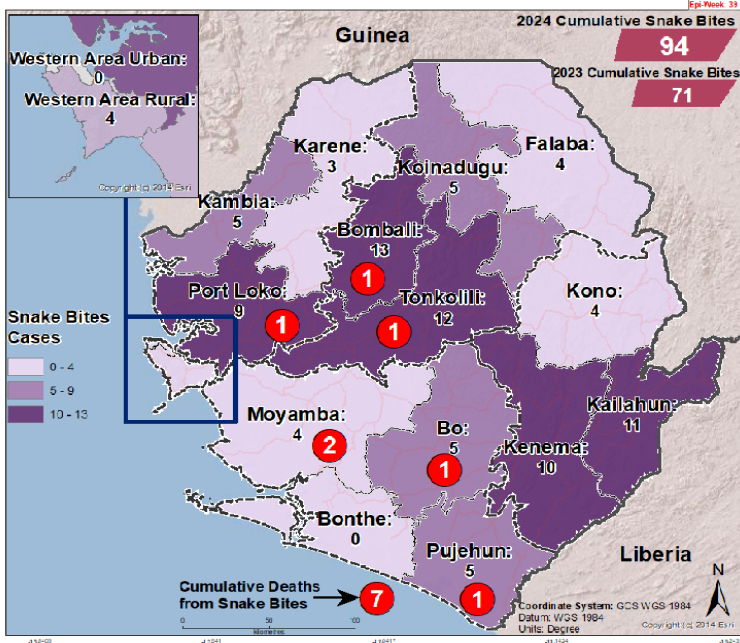


District	2023 Week 1 - 9	2024 Week 1 - 9	
Bo	1	6	↑
Bombali	29	47	↑
Bonthe	1	2	↑
Falaba	5	5	→
Kailahun	18	15	↓
Kambia	7	7	→
Karene	4	2	↓
Kenema	10	6	↓
Koinadugu	2	6	↑
Kono	43	44	↑
Moyamba	8	11	↑
Port Loko	20	7	↓
Pujehun	9	12	↑
Tonkolili	0	12	↑
Western Rural	6	15	↑
Western Urban	8	10	↑
<b>Total</b>	<b>171</b>	<b>207</b>	↑

Week nine of 2024 has reported more dog bite cases including two deaths related to dog bite compared to 2023 same period. The highest number of cases were reported from Kono, Bombali, Kailahun and Tonkolili districts and the deaths were from WAR and Karene districts. Total reported cases since the start of the year is 207.

## Cumulative Snake Bite cases reported by district (epi Week 9, 2024)

## Compared Snake Bite cases reported by district (epi Week 1- 9, 2023 & 2024)



District	2023 Week 1 - 9	2024 Week 1 - 9	
Bo	2	5	↑
Bombali	12	13	↑
Bonthe	0	0	→
Falaba	3	4	↑
Kailahun	6	11	↑
Kambia	3	5	↑
Karene	5	3	↓
Kenema	6	10	↑
Koinadugu	6	5	↓
Kono	12	4	↓
Moyamba	1	4	↑
Port Loko	8	9	↑
Pujehun	6	5	↓
Tonkolili	0	12	↑
Western Rural	1	4	↑
Western Urban	0	0	→
<b>Total</b>	<b>71</b>	<b>94</b>	↑

Week nine of 2024 reported more snake bite cases compared to week nine of 2023 and with seven deaths related to snake bite. The deaths are from Pujehun, Port Loko, Bo, Tonkolili, Moyamba and Bombali districts. The highest number of cases were reported from Bombali, Tonkolili, Bo, and Kenema districts. Total reported cases since the start of the year is ninety-four (94).

**NATIONAL WEEKLY EPIDEMIOLOGICAL BULLETIN PRODUCTION TEAM**



**Editor: Charles Keimbe**



**Publisher: Mr. Harold Thomas**



**Data Analyst: Mr. Samba Kamara**