



WEEK 06

20  24



GOVERNMENT OF SIERRA LEONE  
MINISTRY OF HEALTH  
NATIONAL PUBLIC HEALTH AGENCY

## ***NATIONAL WEEKLY EPIDEMIOLOGICAL BULLETIN***

WEEK 06: 5th — 11th Feb, 2024



# KEY SURVEILLANCE PRIORITY DISEASE AND 117 CALL CENTRE HIGHLIGHTS FOR THE WEEK

## Disease specific report Highlights

- **Measles:** Four (4) cases of suspected measles were reported this week. All of the cases were under five years of age, from Port Loko and Karene (2) each per districts. Samples were collected and sent to CPHRL for confirmation.
- **Animal Bite (Dog):** Twenty (20) Dog bite cases were reported this week. Of the cases, six were under five years and fourteen were above five years. The highest number of cases were from Bombali (6), WAR (4) and Kono (3) districts.
- **Animal Bite (Snake):** Three (3) Snake bite cases were reported this week. All of the cases were above five years of age. The cases were from Bombali, Tonkolili and WAR (1) each per district.
- **Maternal death:** Four (4) maternal deaths were reported this week from Bombali, Bonthe, Falaba and Koinadugu (1) each per district.
- **Acute Viral Hemorrhagic Fever (AVHF):** Fifteen (15) cases of suspected AVHFs with four deaths were reported this week. The deaths were from Kenema and Tonkolili (2) each per district. Of the cases, fourteen were under fives and one above five year from Kenema (13) and tonkolili (2) districts. The cases were investigated and samples sent to Kenema regional Lab. for confirmation.
- **Bacterial Meningitis:** Eleven (11) cases of suspected Bacterial Meningitis were reported from this week. Of the cases, six were under fives and five above five years of age from WAU (10) and Kailahun (1) districts. No samples were collected

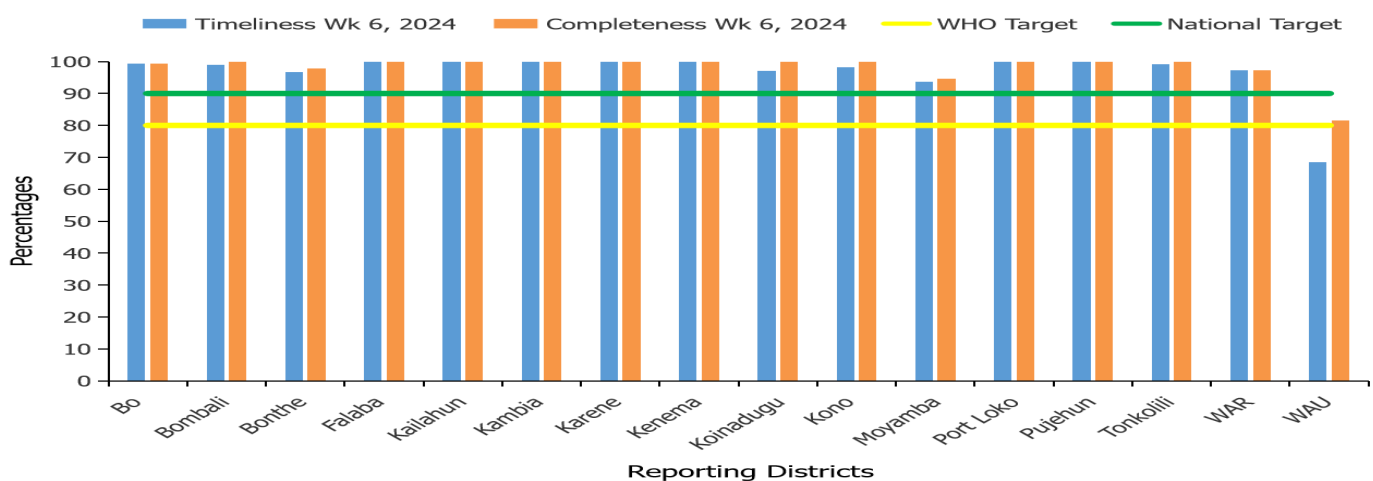
## 117 Call Centre Highlights

- **Perinatal Deaths:** Four (4) calls related to Perinatal deaths were made this week of which, stillbirth (3) and neonatal death (1)
- **Pneumonia:** Ten (10) calls related to suspected pneumonia were made this week from four districts
- **Maternal death:** Four (4) calls related to maternal deaths were made this week from Bo, Bonthe, Karene and Koinadugu (1) each per district

## 117 Call Summary for epi week 1, 2024

- A total of 10,955 calls were received and responded to, out of which 10,812 (98.7%) were prank calls and 143 (1.3%) were signals
- Out of the total signals received:
  - Death 103 (72.0%)
  - Health Emergencies 7 (4.5%): dog bite 2 & ambulatory service 5
  - Sick 29 (20.3%)

## Health Facility Timeliness & Completeness of Weekly report by district, (Epi week 6, 2024)

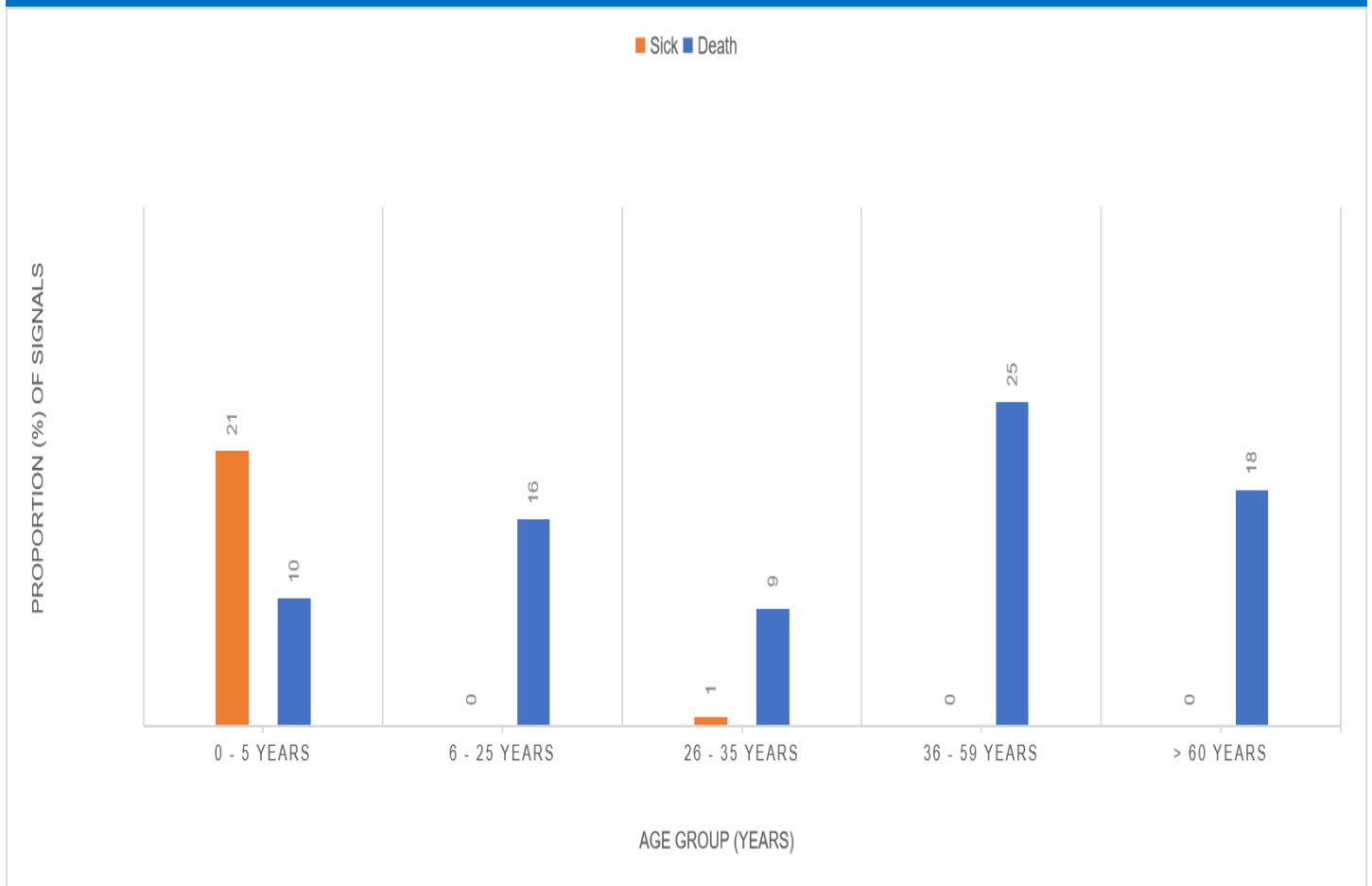


For Week 6 of 2024, 15 out of 16 districts achieved both the WHO and national targets for timelines and completeness while one achieved only the WHO target for completeness without achieving the targets for timeliness

## Updates from the samples of suspected cases reported for this week

- **Acute Viral Haemorrhagic Fever (AVHF):** Fifteen Samples of suspected AVHF were sent to the Lab. this week. The sample were collected and sent to Kenema regional Lab. All of the samples however tested Negative AVHFs
- **Measles:** Two samples were from Karene district were sent to the Lab. The turn around time for measles is seven days
- **Yellow fever:** Two samples of suspected yellow fever samples were sent to the Lab. For confirmation. The TAT for yellow fever is seven days
- **Bacterial Meningitis:** Eleven cases of suspected bacterial meningitis were reported. No sample was collected for bacterial meningitis confirmation

## Sick and death signals by age group epi week 6, 2024 (n=29) (n=103)



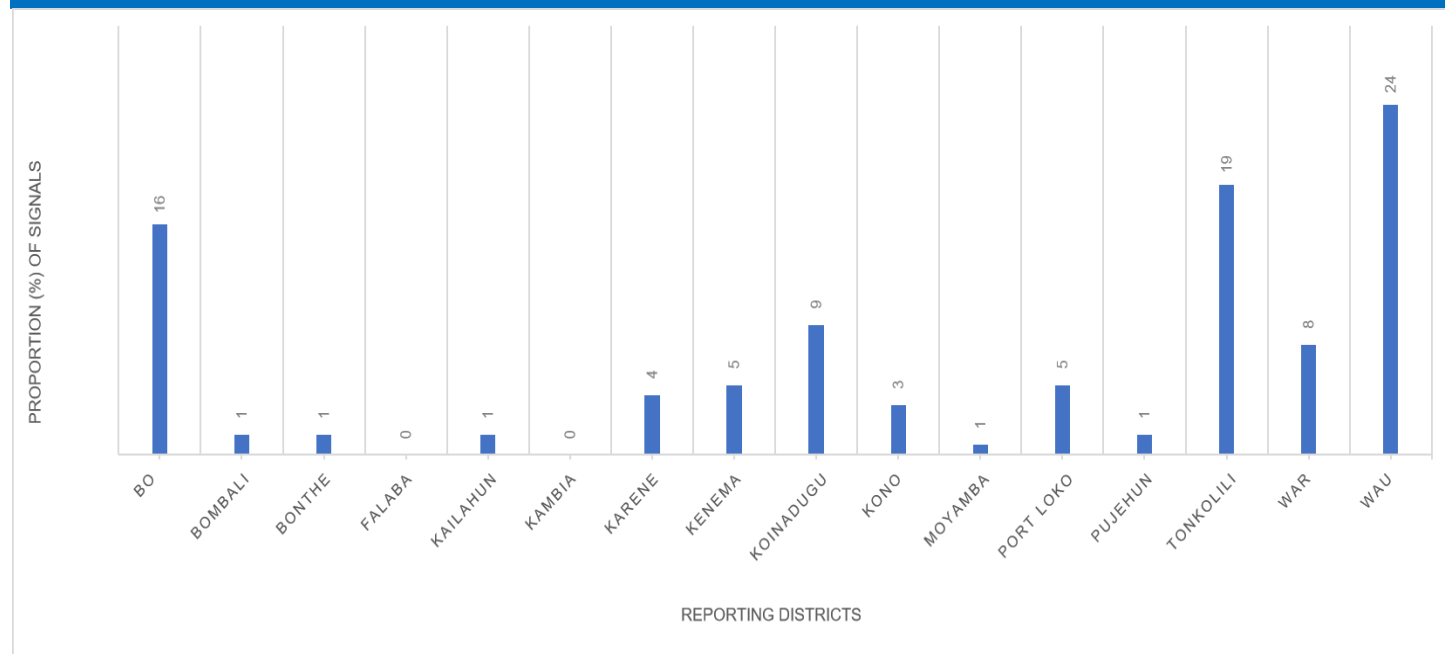
For week six of 2024, a total of 132 call signals for sick and death were made of which 103 were related to deaths and 29 were for sick. The age groups of 36-59yrs had a higher proportion of death reported and the least was 26-35years. For the sick cases the age group of 0-5 reported the highest

## Submission of report by health facility via phone call, SMS, paper form or Mobile internet (Epi week 6, 2024)

District	#s of Expected HFs	Call	Paper forms	SMS	Mobile SMS	Mobile internet	Mobile Total	Total Submission	% Mobile Submission
Bo	150	86	0	0	11	52	63	149	42
Bombali	97	0	0	7	4	86	90	97	93
Bonthe	89	3	0	20	7	57	64	87	74
Falaba	50	25	0	0	7	18	25	50	50
Kailahun	91	0	0	0	5	86	91	91	100
Kambia	74	0	0	0	8	66	74	74	100
Karene	62	0	0	14	10	38	48	62	77
Kenema	141	0	0	42	20	79	99	141	70
Koinadugu	67	0	0	49	4	14	18	67	27
Kono	114	5	0	71	4	34	38	114	33
Moyamba	110	71	3	0	9	21	30	104	29
Port Loko	118	0	0	0	49	69	118	118	100
Pujehun	104	0	0	1	6	97	103	104	99
Tonkolili	117	47	0	0	18	52	70	117	60
WAR	72	3	11	0	4	53	57	71	80
WAU	108	0	0	0	10	78	88	88	100
<b>Cumulative</b>	<b>1564</b>	<b>240</b>	<b>14</b>	<b>204</b>	<b>176</b>	<b>900</b>	<b>1076</b>	<b>1534</b>	<b>70</b>
	<b>KEY:</b>	<b>90 - 100</b>		<b>75 - 89</b>		<b>0 - 74</b>			

For week six of 2024, a total of 1,564 facilities reported countrywide using various means of reporting. Mobile SMS and mobile internet were used exclusively by four districts (Kailahun, Kambia, WAU and Port Loko ). Only one district (WAR) used paper based reporting of which, 11/72 (15%) of the facilities reported using paper. The country has moved from paper based reporting to electronic since 2018

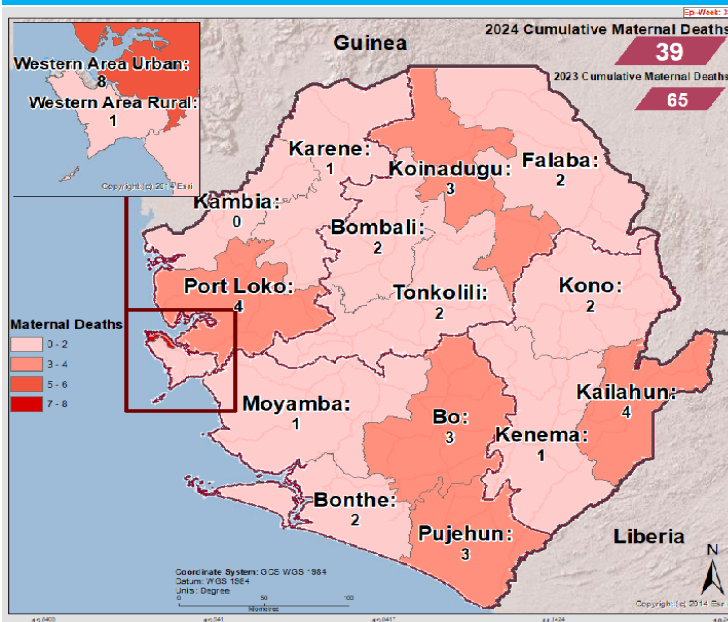
## Call signals by reporting districts epi week 6 January, 2024 (N=103)



For week six of 2024, greater proportion of call signals were from WAU closely followed by Tonkolili district, then Bo district. 2/16 (12.5%) of districts made zero call.

## Cumulative Maternal Deaths reported by district (Epi Week 6, 2024)

## Compared Maternal Deaths reported by district (Epi Week 1- 6, 2023 & 2024)



District	2023 Week 1 - 6	2024 Week 1 - 6	
Bo	10	3	↓
Bombali	2	2	↔
Bonthe	6	2	↓
Falaba	3	2	↓
Kailahun	3	4	↑
Kambia	3	0	↓
Karene	1	1	↔
Kenema	3	1	↓
Koinadugu	0	3	↑
Kono	5	2	↓
Moyamba	3	1	↓
Port Loko	3	4	↑
Pujehun	3	3	↔
Tonkolili	6	2	↓
Western Rural	2	1	↓
Western Urban	12	8	↓
<b>Total</b>	<b>65</b>	<b>39</b>	

In comparison with week six of 2023, 2024 has reported less maternal deaths for the same period. Four deaths were reported this week from four districts. One district (Kambia) has not reported any maternal death in the past six weeks. Total maternal deaths reported since the start of the year is thirty-nine (39).

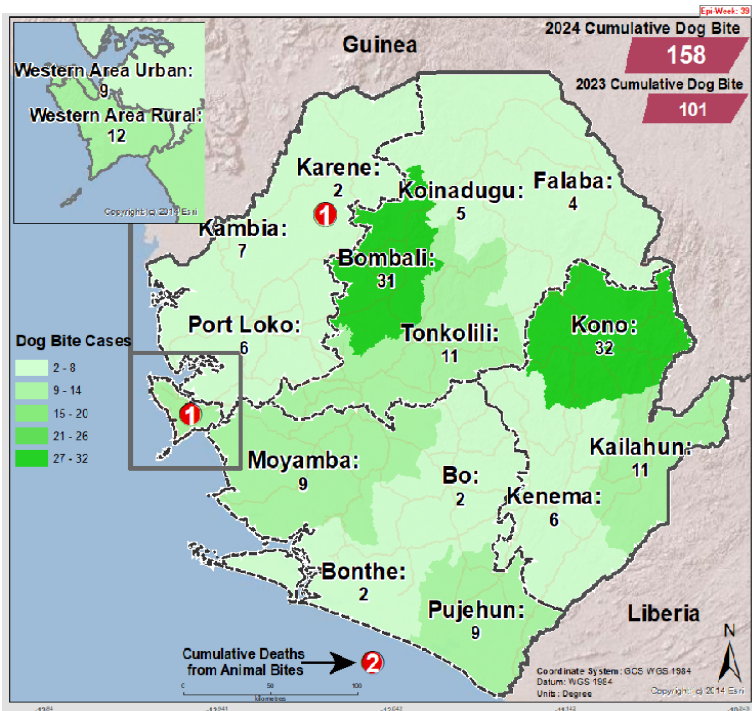
## Maternal Deaths reported by district and Place of Occurrence (Epi Week 6, 2024)

District	Health Facility	No. of Death
Bombali	Makeni Govt. hospital	1
Bonthe	Bonthe Govt. Hospital	1
Falaba	Gberefeh MCHP	1
Koinadugu	Kailahun Govt. Hospital	1
<b>Total</b>		<b>4</b>

In week six of 2024, a total of four maternal deaths were reported from four districts. Three out of four maternal deaths were from hospitals and one from MCHP. Maternal death at PHUs is a major cause for concern to the district.

## Cumulative Dog Bite cases reported by district (Epi Week 6, 2024)

## Compared Dog Bite cases reported by district (Epi Week 1- 6, 2023 & 2024)

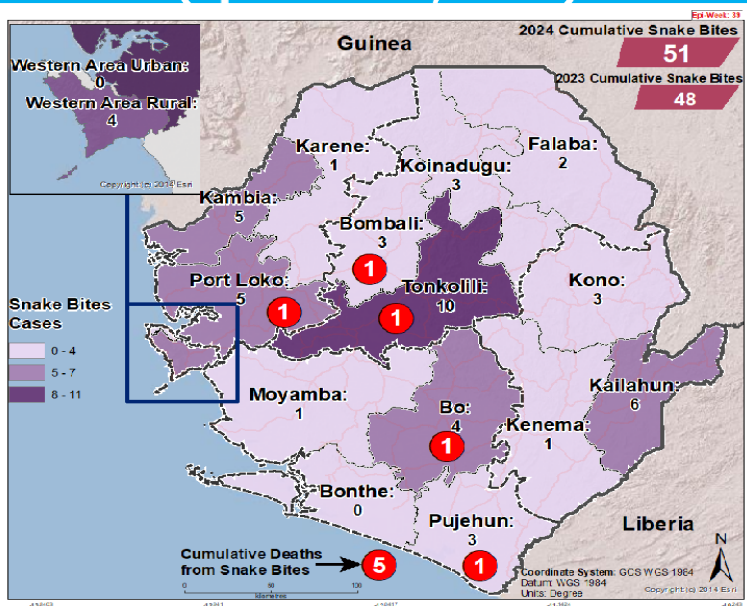


District	2023 Week 1 - 6	2024 Week 1 - 6	
Bo	0	2	↑
Bombali	15	31	↑
Bonthe	1	2	↑
Falaba	3	4	↑
Kailahun	12	11	↓
Kambia	3	7	↑
Karene	3	2	↓
Kenema	6	6	—
Koinadugu	1	5	↑
Kono	26	32	↑
Moyamba	4	9	↑
Port Loko	13	6	↓
Pujehun	7	9	↑
Tonkolili	0	11	↑
Western Rural	3	12	↑
Western Urban	4	9	↑
<b>Total</b>	<b>101</b>	<b>158</b>	↑

Week six of 2024 has reported more dog bite cases including two deaths related to dog bite compared to 2023 same period. The highest number of cases were reported from Bombali Kono and Kailahun and Tonkolili districts and the deaths were from WAR and Karene districts. Total reported cases since the start of the year is 158.

## Cumulative Snake Bite cases reported by district (Epi Week 6, 2024)

## Compared Snake Bite cases reported by district (Epi Week 1- 6, 2023 & 2024)



District	2023 Week 1 - 6	2024 Week 1 - 6	
Bo	1	4	↑
Bombali	8	3	↓
Bonthe	0	0	—
Falaba	2	2	—
Kailahun	3	6	↑
Kambia	3	5	↑
Karene	4	1	↓
Kenema	3	1	↓
Koinadugu	4	3	↓
Kono	10	3	↓
Moyamba	1	1	—
Port Loko	4	5	↑
Pujehun	4	3	↓
Tonkolili	0	10	↑
Western Rural	1	4	↑
Western Urban	0	0	—
<b>Total</b>	<b>48</b>	<b>51</b>	↑

Week six of 2024 reported more snake bite cases compared to week six of 2023 and with five deaths related to snake bite. The deaths are from Pujehun, Port Loko, Bo, Tonkolili and Bombali districts. The highest number of cases were reported from Kailahun and Tonkolili districts. Total reported cases since the start of the year is fifty-one (51).

**NATIONAL WEEKLY EPIDEMIOLOGICAL BULLETIN PRODUCTION TEAM**



**Editor: Charles Keimbe**



**Publisher: Mr. Harold Thomas**



**Data Analyst: Mr. Samba Kamara**