



WEEK 16

20  24



GOVERNMENT OF SIERRA LEONE
MINISTRY OF HEALTH
NATIONAL PUBLIC HEALTH AGENCY

NATIONAL WEEKLY EPIDEMIOLOGICAL BULLETIN

WEEK 16: 15th — 21st April, 2024



KEY SURVEILLANCE PRIORITY DISEASE AND 117 CALL CENTRE HIGHLIGHTS FOR THE WEEK

Disease specific report Highlights

117 Call Centre Highlights

- **Acute Flaccid Paralysis (AFP):** One (1) case of AFP was reported this week in an under five from Kailahun district. The case was investigated and sample sent to CPHRL for confirmatory shipment
- **Animal Bite (Dog):** Twenty-six (26) Dog bite cases with one death was reported this week. The death was from WAU district. Of the cases three were under five and twenty-three were above five years of age. The highest number of cases were from Bombali (8), WAR (3)
- **Animal Bite (Snake):** Nine (9) Snake bite cases were reported this week. All of the cases were above five years. The highest number of cases were from Kono, Port Loko and Pujehun (2) each per district
- **Maternal death:** Six (6) maternal deaths were reported from Kenema (2), Bombali, Bonthe, Kambia, and Tonkolili (1) each per district
- **Acute Viral Hemorrhagic Fever (AVHF):** Six (6) cases of suspected AVHF were reported from Kenema and all aged above five years. The cases were investigated and samples sent to CPHRL for confirmation and all tested negative for AVHF.
- **Bacterial Meningitis:** Two (2) cases of suspected Meningitis were reported this week from Bombali and WAU district. All aged above five years. No sample was collected for laboratory confirmation.
- **Yellow Fever :** Two (2) suspected cases of Yellow Fever were reported this week from Koinadugu and WAU district. All of the cases were above five years. The cases were investigated and samples sent to CPHRL for confirmation

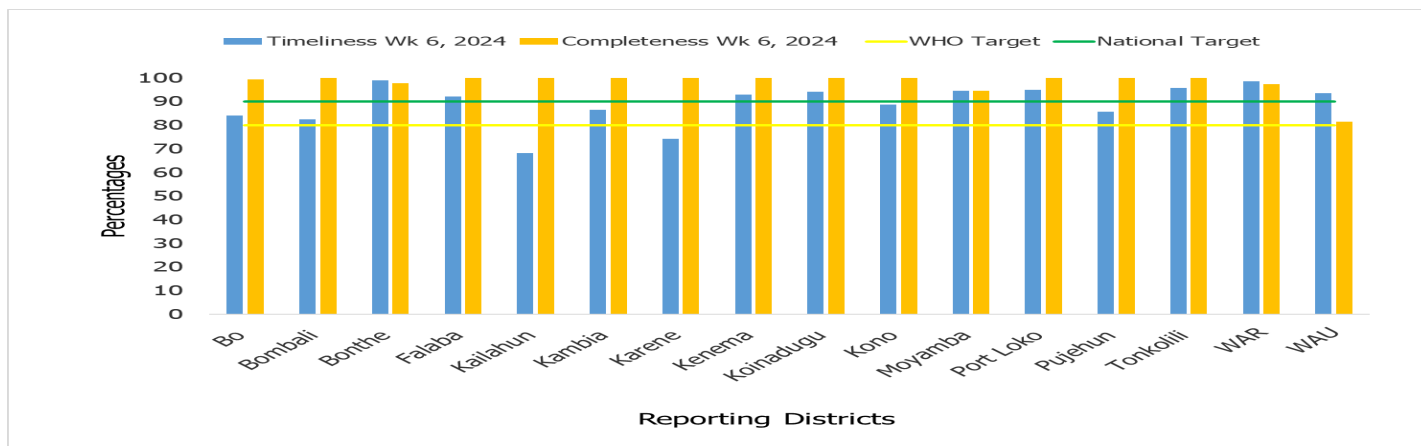
Key highlights

- 1 **Dog bite** [Age:>5 yrs.]
 - ✓ W/ Rural
- 2 **Suspected measles** [Age:<5 yrs.]
 - ✓ Port Loko
- 6 **Perinatal deaths (5 stillbirths & 1 early neonatal death)**
 - ✓ 5 Stillbirth (3 Bo & 2 W/ Rural)
 - ✓ 1 Early Neonatal death (W/ Rural)
- 3 **Maternal death:**
 - ✓ 2 Bonthe
 - ✓ 1 Bo
- 3 **RTA** [Age:>5 yrs.]
 - ✓ 1 each for Bo, Koinadugu & W/ Rural
- 3 **Tuberculosis:**
 - ✓ 1 each for Bo, Koinadugu & W/ Rural
- 55 **Others:** (fever, headache, abdominal pain, convulsion)

Call Summary for epi week 16, 2024

- A total of 9,432 calls were received and responded to
- 9,292 (98.5%) were prank calls and 140 (1.5%) were signals
- Out of the total signals received:
 - Death 125 (89.3%)
 - Sick 4 (2.9%)
 - Health Emergencies 7 (5.0%): dog bite 2, snake bite 1, ambulatory service 3 & attempted murder 1
 - Health Information 4 (2.9%): information on kush 3 & rabies inquiries 1
- Health Facility 83 (59%) & Community 57 (41%)

Health Facility Timeliness & Completeness of Weekly report by district, (epi week 16, 2024)

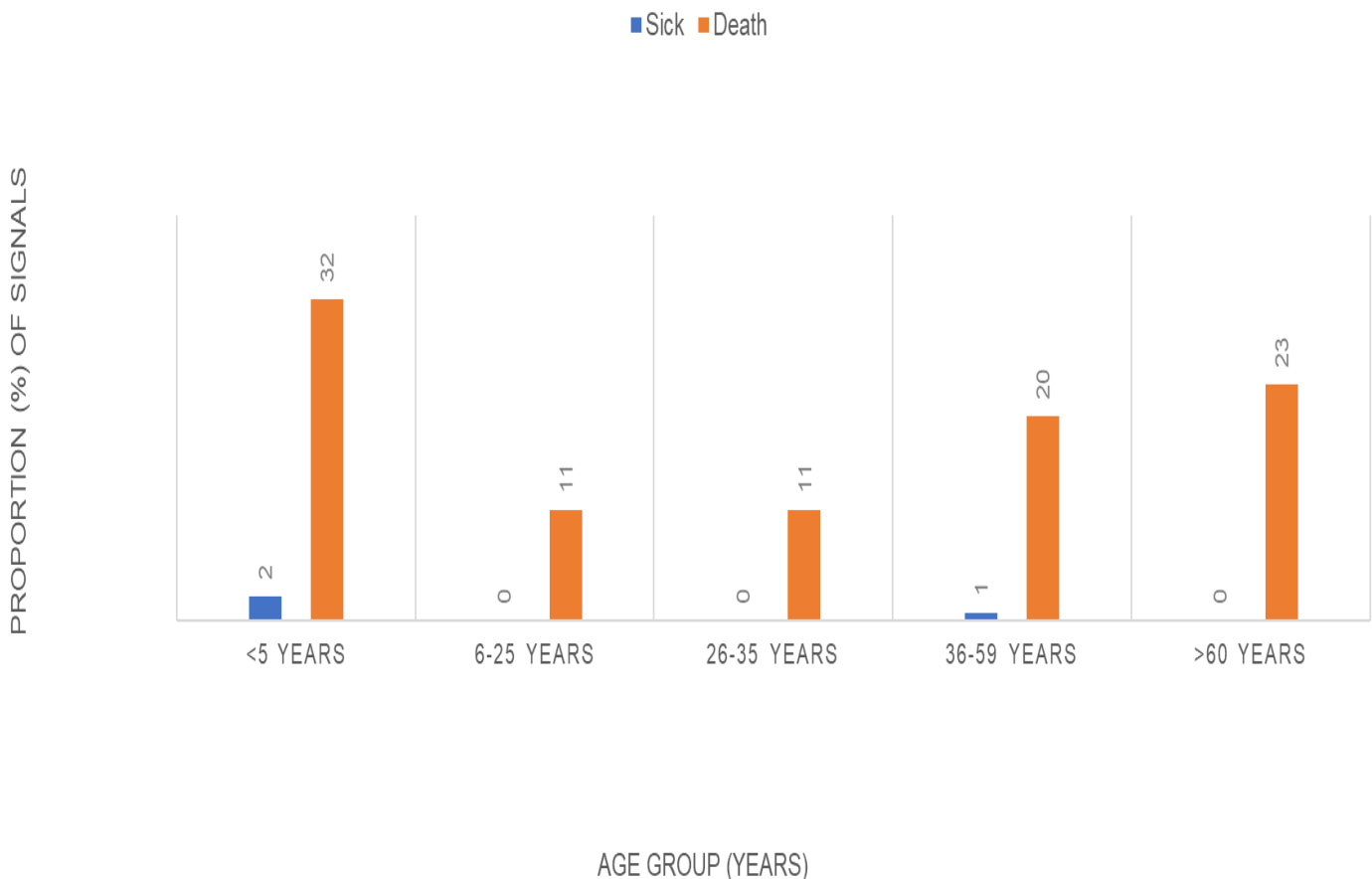


For Week 16 of 2024, 9 out of 16 districts achieved both the WHO and national targets for timeliness and completeness, seven met national target for completeness but couldn't meet WHO target for timeliness, while two could not meet WHO target for timeliness

Updates from the samples of suspected cases reported for week 16

- **Acute Flaccid Paralysis (AFP):** One case of AFP sample was sent to the Lab. this week. The TAT for AFP sample is usually 2-3 weeks since samples are exported to Abidjan for confirmatory testing
- **Acute Viral Haemorrhagic Fever (AVHF):** Six Samples of suspected AVHF were sent to the Lab this week. The samples were collected and sent to Kenema regional Lab. All of the samples however tested Negative AVHFs
- **Yellow fever:** Two samples of suspected yellow fever were sent to the Lab. For confirmation. The TAT for yellow fever is seven days

Sick and death signals by age groups, epi week 16, 2024 (n=4) (n=125)



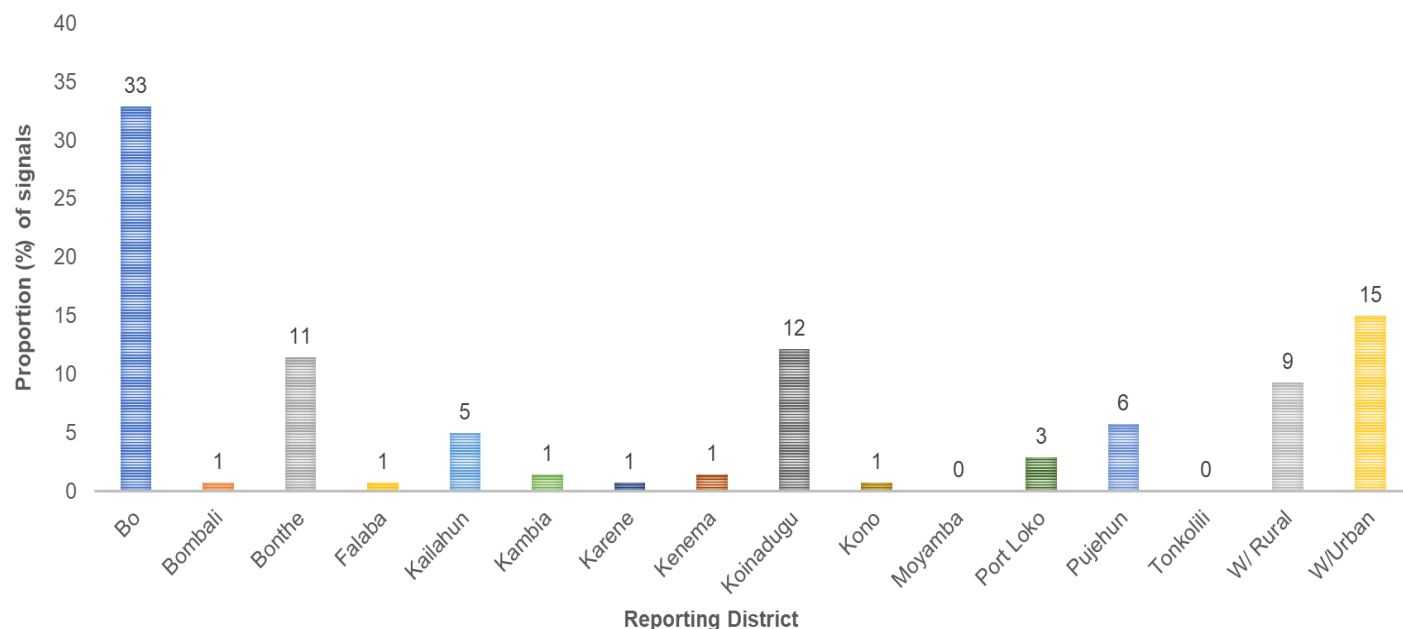
For week sixteen of 2024, a total of 129 call signals for sick and death were made of which 125 were related to deaths and 4 were for sick. The age group of 5 years had a higher proportion of death reported and the least were 6 - 25years and 26 -35 years. For the sick cases the age groups of 2years and 1years reported one each

Submission of report by health facility via phone call, SMS, paper form or Mobile internet (epi week 16, 2024)

District	#s of Expected HFs	Call	Paper forms	SMS	Mobile SMS	Mobile internet	Mobile Total	Total Submission	% Mobile Submission
Bo	150	1	0	48	8	69	77	126	61
Bombali	97	0	0	12	7	72	79	91	87
Bonthe	89	1	1	13	9	64	73	88	83
Falaba	50	18	0	0	12	15	27	45	60
Kailahun	91	0	0	0	5	72	77	77	100
Kambia	74	0	0	0	5	59	64	64	100
Karene	62	0	0	9	2	34	36	45	80
Kenema	141	0	0	67	23	42	65	132	49
Koinadugu	67	0	0	37	2	28	30	67	45
Kono	114	0	0	44	7	25	32	76	42
Moyamba	110	66	0	0	13	26	39	105	37
Port Loko	118	0	0	0	39	73	112	112	100
Pujehun	104	0	0	2	9	77	86	88	98
Tonkolili	117	61	0	0	6	49	55	116	47
WAR	72	0	0	2	1	65	66	68	97
WAU	108	0	0	0	9	94	103	103	100
Cumulative	1564	147	1	234	157	864	1021	1403	73
		KEY	90 - 100		75 - 89		0 - 74		

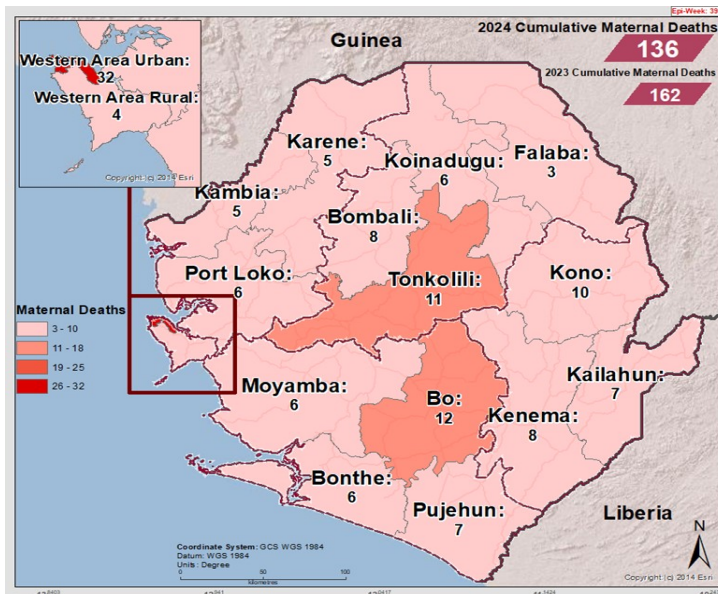
For week sixteen of 2024, a total of 1,564 facilities reported countrywide using various means of reporting. Mobile SMS and mobile internet were used exclusively by four districts (Kailahun, Kambia, Port Loko). Only one district (Bonthe) used paper based reporting of which, 1/72 (1.3%) of the facilities reported using paper. The country has moved from paper based reporting to electronic since 2018

Call signals by reporting districts epi week 16, 2024 (N=140)



For week sixteen of 2024, greater proportion of call signals were from Bo district closely followed by WAU district, then Koinadugu district. Zero call was made by 2/16 (12.5%) districts.

Cumulative Maternal Deaths reported by district (epi Week 16, 2024)



Compared Maternal Deaths reported by district (epi Week 1- 16, 2023 & 2024)

District	2023 Week 1 - 16	2024 Week 1 - 16
Bo	26	6
Bombali	3	8
Bonthe	7	6
Falaba	3	3
Kailahun	5	7
Kambia	10	5
Karene	4	5
Kenema	8	8
Koinadugu	3	6
Kono	8	6
Moyamba	3	6
Port Loko	7	6
Pujehun	6	7
Tonkolili	14	11
WAR	8	4
WAU	29	32
Total	144	126

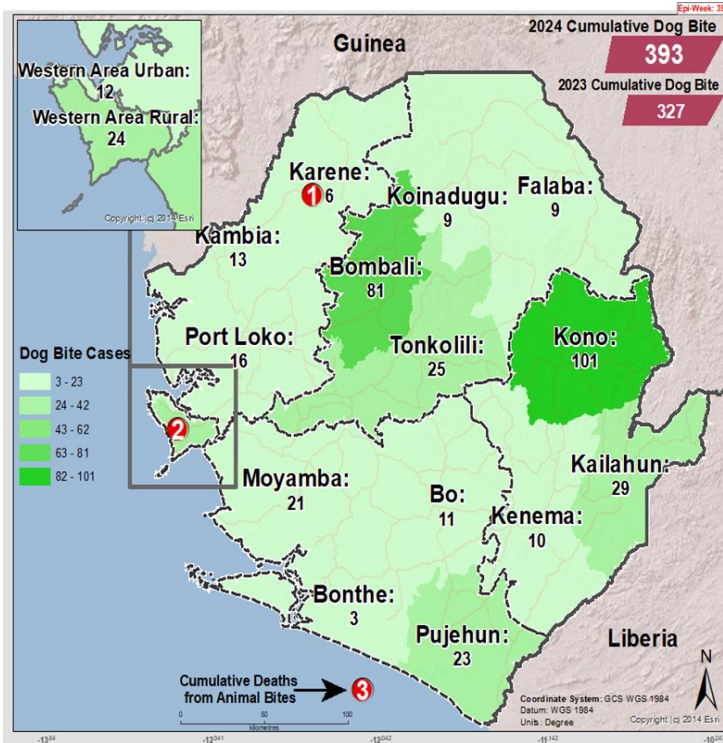
In comparison with week sixteen of 2023, week sixteen of 2024 has report less maternal deaths for the same period. Six deaths were reported this week from five districts. Total maternal deaths reported since the start of the year is 136.

Maternal Deaths reported by district and Place of Occurrence (epi Week 16, 2024)

District	Health Facility	No. of Death
Kenema	Kenema Govt. Hospital	2
Bombali	Kanikay MCHP	1
Bonthe	Bonthe Govt. Hospital	1
Kambia	Kambia Govt. Hospital	1
Tonkolili	Magburaka Govt. Hospital	1
Total		6

In week sixteen of 2024, a total of six maternal deaths were reported from five districts. Of the six maternal deaths reported, five were from hospitals and one from PHU. The DHMTs of the districts in question are requested to investigate the causes of the maternal deaths at the PHUs.

Cumulative Dog Bite cases reported by district (epi Week 16, 2024)

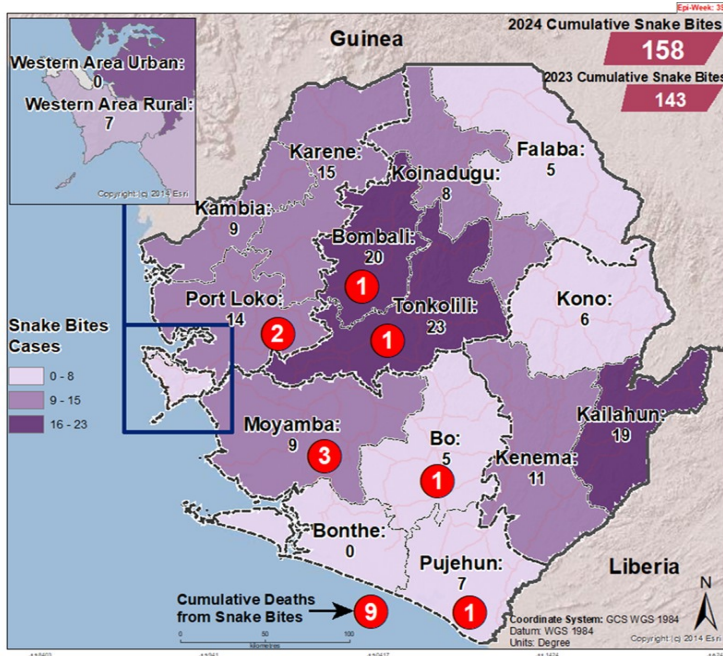


Compared Dog Bite cases reported by district (epi Week 1- 16, 2023 & 2024)

District	2023 Week 1 - 16	2024 Week 1 - 16
Bo	2	11
Bombali	52	81
Bonthe	3	3
Falaba	9	9
Kailahun	29	29
Kambia	14	13
Karene	6	7
Kenema	14	10
Koinadugu	5	9
Kono	77	101
Moyamba	11	21
Port Loko	27	16
Pujehun	21	23
Tonkolili	1	25
WAR	18	24
WAU	19	13
Total	308	395

Week sixteen of 2024 has reported more dog bite cases including two deaths related to dog bite compared to 2023 same period. The highest number of cases were reported from Kono, Bombali, Kailahun, Pujehun, Tonkolili and Moyamba districts and the deaths were from WAR and Karene districts. Total reported cases since the start of the year is 393.

Cumulative Snake Bite cases reported by district (epi Week 15, 2024)



Compared Snake Bite cases reported by district (epi Week 1 - 16, 2023 & 2024)

District	2023 Week 1 - 16	2024 Week 1 - 16
Bo	3	6
Bombali	27	21
Bonthe	1	0
Falaba	13	5
Kailahun	16	20
Kambia	4	9
Karene	9	15
Kenema	9	12
Koinadugu	8	8
Kono	17	8
Moyamba	6	13
Port Loko	21	18
Pujehun	10	10
Tonkolili	2	24
WAR	3	7
WAU	0	0
Total	149	176

Week sixteen of 2024 reported more snake bite cases compared to week sixteen of 2023 and with nine deaths related to snake bite. The deaths are from Pujehun, Port Loko, Bo, Tonkolili, Moyamba and Bombali districts. The highest number of cases were reported from Bombali, Tonkolili, Port Loko, Kailahun, Karene and Kenema districts. Total reported cases since the start of the year is 158.

NATIONAL WEEKLY EPIDEMIOLOGICAL BULLETIN PRODUCTION TEAM



Editor: Charles Keimbe



Publisher: Mr. Harold Thomas

Co Editor: Haja Fatmata Bangura

Data Analyst: Mr. Samba Kamara

