



WEEK 15

20  24



GOVERNMENT OF SIERRA LEONE
MINISTRY OF HEALTH
NATIONAL PUBLIC HEALTH AGENCY

NATIONAL WEEKLY EPIDEMIOLOGICAL BULLETIN

WEEK 15: 08th – 14th April, 2024



KEY SURVEILLANCE PRIORITY DISEASE AND 117 CALL CENTRE HIGHLIGHTS FOR THE WEEK

Disease specific report Highlights

- **Animal Bite (Dog):** Thirty-one (31) Dog bite cases were reported this week. The cases were above five years of age. The highest number of cases were from Kono (12), Bombali (5), Tonkolili (3)
- **Animal Bite (Snake):** Fifteen (15) Snake bite cases were reported this week. All of the cases were under five years. The highest number of cases were from Karene (9), Bombali, Falaba, Kailahun, Moyamba, Port Loko and WAR (1) each per district
- **Maternal death:** Five (5) maternal deaths were reported from Kambia, Karene, Kenema, Kono and Tonkolili (1) each per district
- **Acute Viral Hemorrhagic Fever (AVHF):** Eleven (11) cases of suspected AVHF with one death was reported this week. The death was from Kenema district. Of the cases four were under five and seven were above five years. The highest cases were from Kenema (10) and Kailahun (1). The cases were investigated and samples sent to CPHRL for confirmation and all tested negative for AVHF.
- **Bacterial Meningitis:** Five (5) cases of suspected Meningitis were reported this week from WAU (4) and Kono (1). All aged above five years of age. No sample was collected for laboratory confirmation.

117 Call Centre Highlights

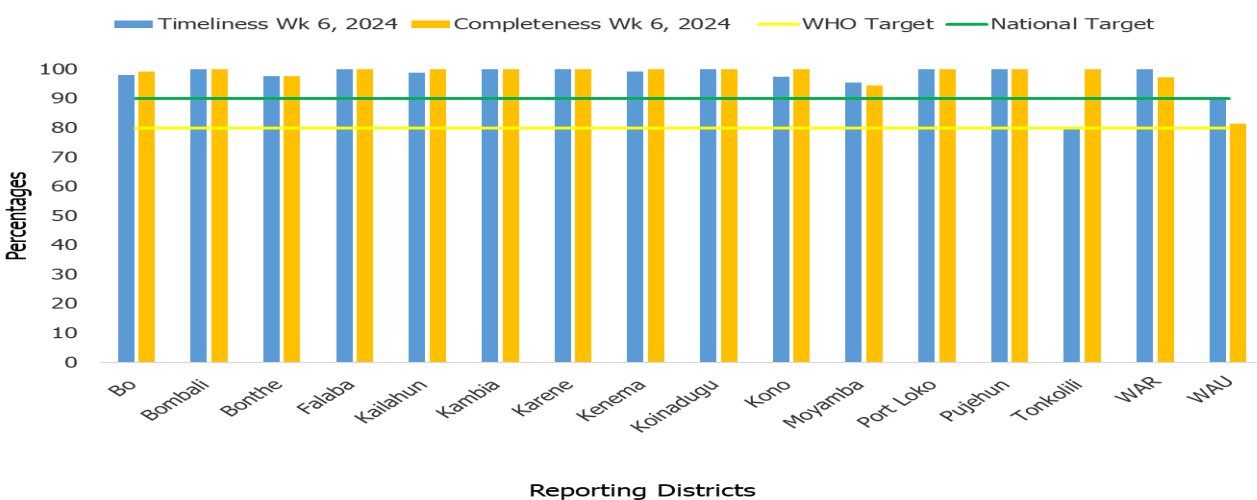
Key highlights

- ✓ **1 Diabetes Mellitus** [Age:>5 yrs.]
✓ Bo
- ✓ **2 Perinatal death (1 stillbirths & 1 early neonatal death)**
✓ 1 Stillbirth (Bonthe)
✓ 1 Early Neonatal death (Bo)
- ✓ **1 RTA:**
✓ Koinadugu
- ✓ **22 Others:** (fever, headache, abdominal pain, convulsion)

117 Call Summary for epi week 15, 2024

- A total of 8,630 calls were received and responded to
- 8,567 (99.3%) were prank calls and 63 (0.7%) were signals
- Out of the total signals received:
 - Death 54 (85.7%)
 - Sick 0 (0.0%)
 - Health Emergencies 3 (4.8%): dog bite 1, snake bite 1 & ambulatory service 1
 - Health Information 4 (6.3%): polio inquiries 2, measles inquiry 1, Kush inquiry 1
 - Referral Call 2 (3.2%): police referral (Kush) 1, fire incident 1
- Community 45 (71%) & Health Facility 18 (29%)

Health Facility Timeliness & Completeness of Weekly report by district, (epi week 15, 2024)

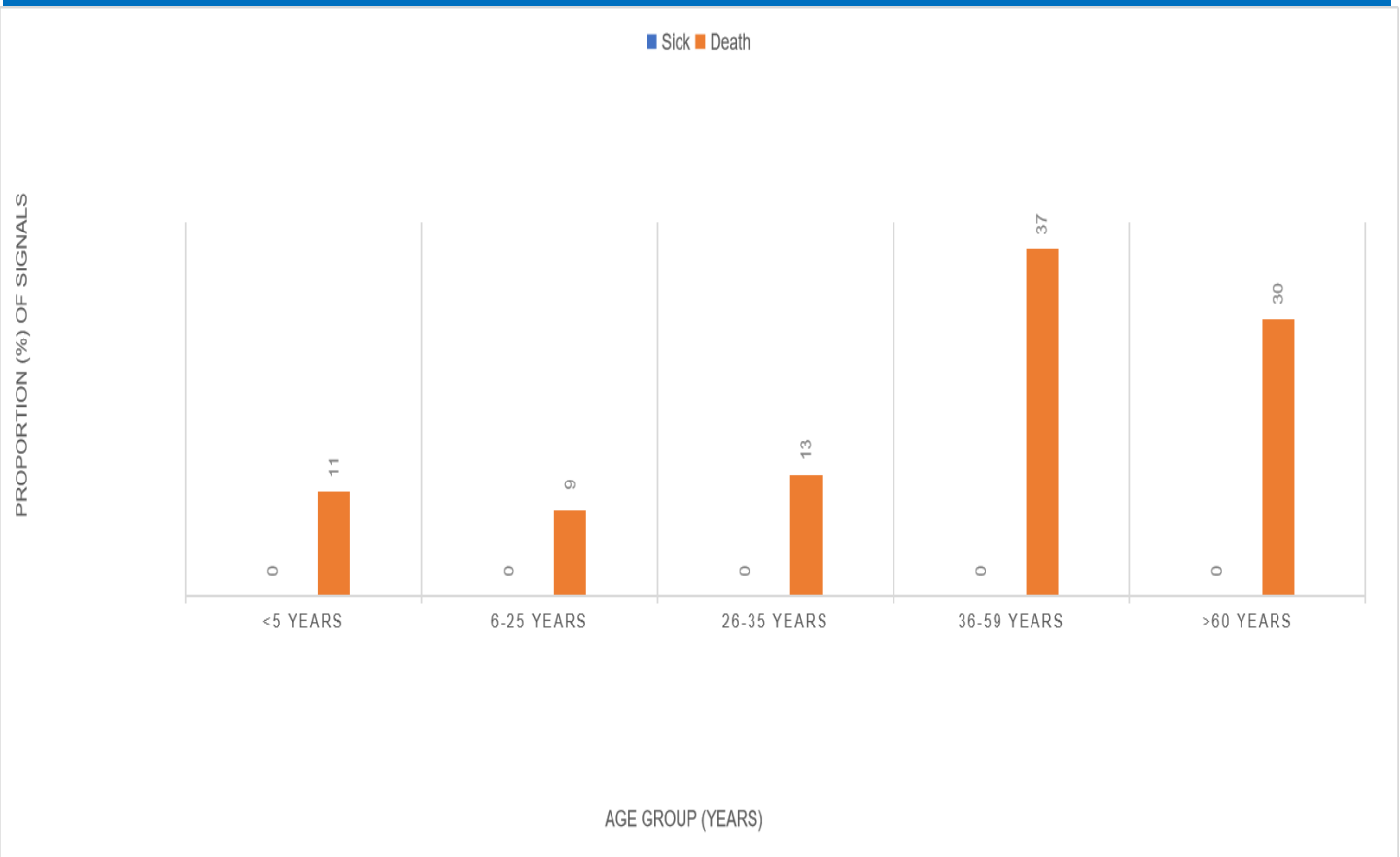


For Week 14 of 2024, 14 out of 16 districts achieved both the WHO and national targets for timeliness and completeness, one met national target for completeness but couldn't met WHO target for timeliness, while one met national target for timeliness but couldn't met WHO target for completeness

Updates from the samples of suspected cases reported for week 15

- **Acute Viral Haemorrhagic Fever (AVHF):** Eleven Samples of suspected AVHF were sent to the Lab this week. The samples were collected and sent to Kenema regional Lab. All of the samples however tested Negative AVHFs
- **Measles:** No sample of suspected measles was sent to the Lab. The turn around time for measles sample is seven days
- **Yellow fever:** No sample of suspected yellow fever was sent to the Lab. For confirmation. The TAT for yellow fever is seven days
- **Acute Flaccid Paralysis (AFP):** No sample of AFP was sent to the Lab. The samples were sent to CPHRL for confirmatory shipment. The TAT for

Sick and death signals by age groups, epi week 13, 2024 (n=2) (n=102)



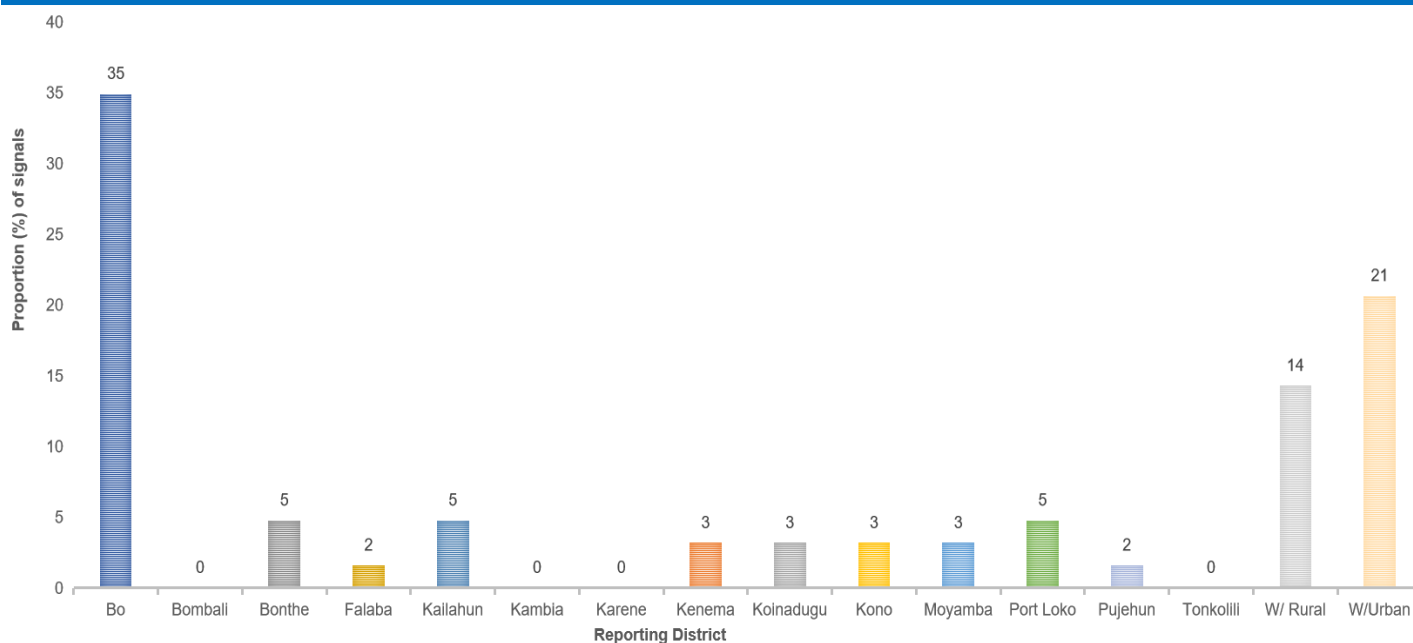
For week fifteen of 2024, a total of 54 call signals for sick and death were made of which 54 were related to deaths and zero were for sick. The age group of 36-59 years had a higher proportion of death reported and the least was 6-25 years. No call related to sick case was made.

Submission of report by health facility via phone call, SMS, paper form or Mobile internet (epi week 15, 2024)

District	#s of Expected HFs	Call	Paper forms	SMS	Mobile SMS	Mobile internet	Mobile Total	Total Submission	% Mobile Submission
Bo	150	0	0	92	15	40	55	147	37
Bombali	97	0	0	3	12	82	94	97	97
Bonthe	89	0	1	17	2	66	68	86	79
Falaba	50	29	0	0	9	12	21	50	42
Kailahun	91	0	0	0	4	87	91	91	100
Kambia	74	0	0	0	5	69	74	74	100
Karene	62	0	0	14	5	43	48	62	77
Kenema	141	1	0	54	18	67	85	140	61
Koinadugu	67	0	0	55	5	7	12	67	18
Kono	114	0	0	68	11	34	45	113	40
Moyamba	110	48	0	0	9	48	57	105	54
Port Loko	118	0	0	0	46	72	118	118	100
Pujehun	104	0	0	1	10	93	103	104	99
Tonkolili	117	53	0	0	37	21	58	111	52
WAR	72	0	0	3	2	67	69	72	96
WAU	108	0	0	0	8	100	108	108	100
Cumulative	1564	131	1	307	198	908	1106	1545	72
KEY:		90 - 100		75 - 89		0 - 74			

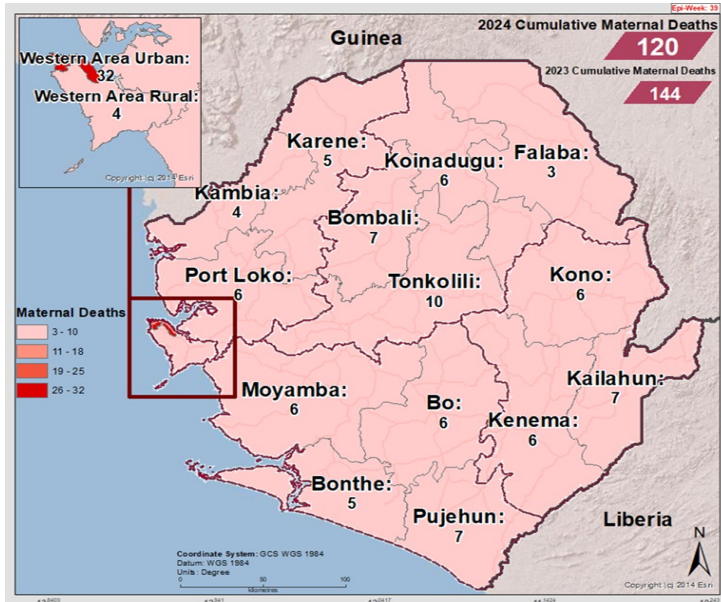
For week fifteen of 2024, a total of 1,564 facilities reported countrywide using various means of reporting. Mobile SMS and mobile internet were used exclusively by four districts (Kailahun, Kambia, Port Loko). Only one district (WAU) used paper based reporting of which, 1/72 (1.3%) of the facilities reported using paper. The country has moved from paper based reporting to electronic since 2018

Call signals by reporting districts epi week 13, 2024 (N=118)



For week fifteen of 2024, greater proportion of call signals were from Bo district closely followed by WAU district, then WAR district. 4/16 (25%) of districts made zero call.

Cumulative Maternal Deaths reported by district (epi Week 15, 2024)



Compared Maternal Deaths reported by district (epi Week 1- 15, 2023 & 2024)

District	2023 Week 1 - 15	2024 Week 1 - 15
Bo	26	6
Bombali	3	7
Bonthe	7	5
Falaba	3	3
Kailahun	5	7
Kambia	10	4
Karene	4	5
Kenema	8	6
Koinadugu	3	6
Kono	8	6
Moyamba	3	6
Port Loko	7	6
Pujehun	6	7
Tonkolili	14	10
WAR	8	4
WAU	29	32
Total	144	120

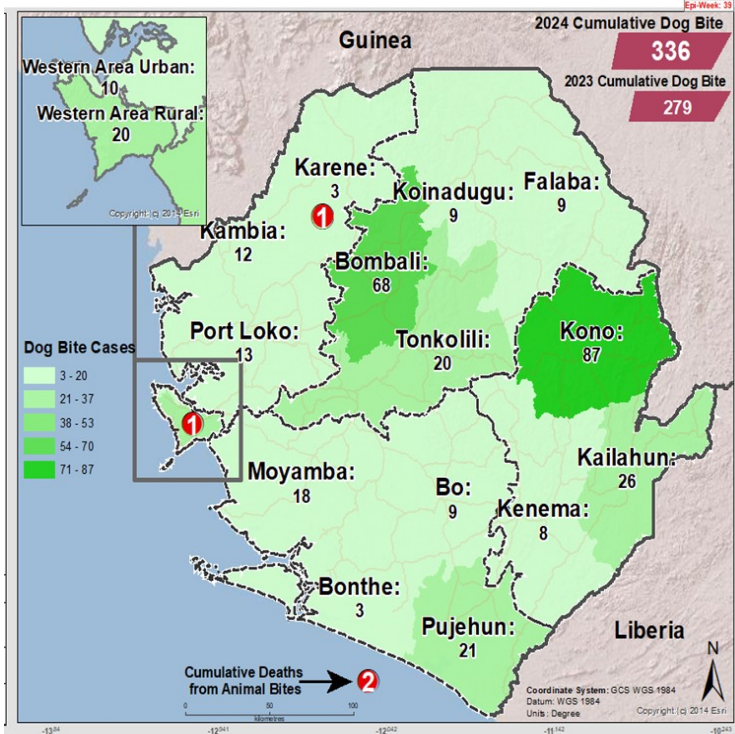
In comparison with week fifteen of 2023, week fifteen 2024 has report less maternal deaths for the same period. Five deaths were reported this week from five districts. Total maternal deaths reported since the start of the year is 120.

Maternal Deaths reported by district and Place of Occurrence (epi Week 15, 2024)

District	Health Facility	No. of Death
Kambia	Kambia Govt. Hospital	1
Karene	Kamakwei Govt. Hospital	1
Kenema	Kenema Govt. Hospital	1
Kono	Koidu Govt. Hospital	1
Tonkolili	Magburaka Govt. Hospital	1
Total		5

In week fifteen of 2024, a total of five maternal deaths were reported from five districts. Of the five maternal deaths reported, all were from hospitals. The DHMTs of the districts in question are requested to investigate the causes of the maternal deaths at the PHUs.

Cumulative Dog Bite cases reported by district (epi Week 15, 2024)

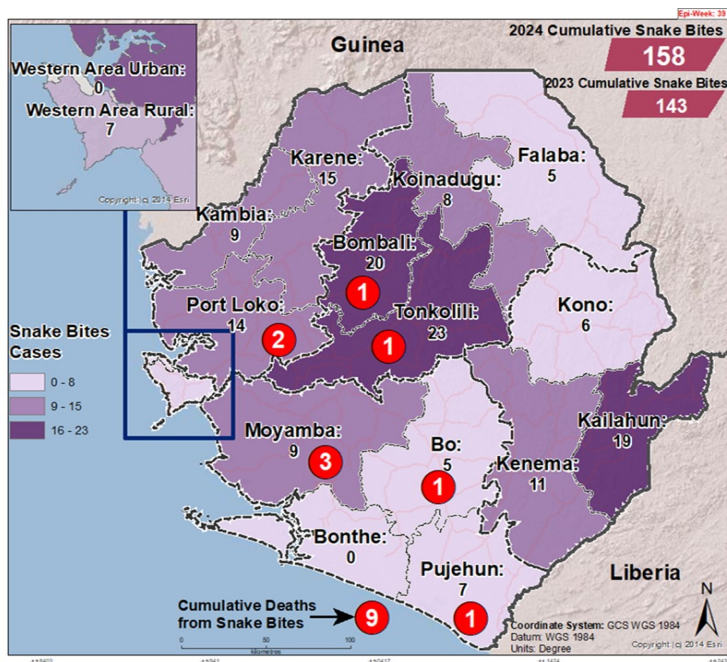


Compared Dog Bite cases reported by district (epi Week 1- 15, 2023 & 2024)

District	2023 Week 1 - 15	2024 Week 1 - 15
Bo	2	10
Bombali	52	73
Bonthe	3	3
Falaba	9	9
Kailahun	29	27
Kambia	14	12
Karene	6	5
Kenema	14	10
Koinadugu	5	9
Kono	77	99
Moyamba	11	19
Port Loko	27	15
Pujehun	21	23
Tonkolili	1	23
WAR	18	21
WU	19	11
Total	308	369

Week fifteen of 2024 has reported more dog bite cases including two deaths related to dog bite compared to 2023 same period. The highest number of cases were reported from Kono, Bombali, Kailahun, Pujehun and Tonkolili districts and the deaths were from WAR and Karene districts. Total reported cases since the start of the year is 336.

Cumulative Snake Bite cases reported by district (epi Week 15, 2024)



Compared Snake Bite cases reported by district (epi Week 1 - 15, 2023 & 2024)

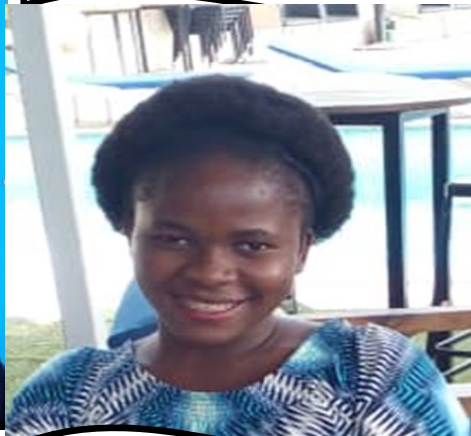
District	2023 Week 1 - 15	2024 Week 1 - 15
Bo	3	6
Bombali	27	21
Bonthe	1	0
Falaba	13	5
Kailahun	16	19
Kambia	4	9
Karene	9	15
Kenema	9	11
Koinadugu	8	8
Kono	17	6
Moyamba	6	12
Port Loko	21	16
Pujehun	10	8
Tonkolili	2	24
WAR	3	7
WU	0	0
Total	149	167

Week fifteen of 2024 reported more snake bite cases compared to week fifteen of 2023 and with nine deaths related to snake bite. The deaths are from Pujehun, Port Loko, Kenema, Karene, Kailahun, Tonkolili, Moyamba and Bombali districts. The highest number of cases were reported from Bombali, Tonkolili, Port Loko, Kailahun, and Kenema districts. Total reported cases since the start of the year is 158.

NATIONAL WEEKLY EPIDEMIOLOGICAL BULLETIN PRODUCTION TEAM



Editor: Charles Keimbe



Publisher: Mr. Harold Thomas

Co Editor: Haja Fatmata Bangura

Data Analyst: Mr. Samba Kamara

