



WEEK 13

20  24



GOVERNMENT OF SIERRA LEONE
MINISTRY OF HEALTH
NATIONAL PUBLIC HEALTH AGENCY

NATIONAL WEEKLY EPIDEMIOLOGICAL BULLETIN

WEEK 14: 01st — 7th April, 2024



KEY SURVEILLANCE PRIORITY DISEASE AND 117 CALL CENTRE HIGHLIGHTS FOR THE WEEK

Disease specific report Highlights

117 Call Centre Highlights

- **Acute Flaccid Paralysis (AFP):** Five (5) cases of AFP were reported this week. The cases were under five years of age from Koinadugu (3), Bo and Tonkolili (1) each per districts. The cases were investigated and samples sent to CPHRL for confirmatory shipment
- **Measles:** Ten (10) cases of suspected measles were reported this week. Of the cases six were under five and four were above five years. The cases were investigated and samples sent to CPHRL for confirmation
- **Animal Bite (Dog):** Twenty-two (22) Dog bite cases were reported this week. The cases were above five years of age. The highest number of cases were from Kono (10), Bombali, Moyamba and Pujehun (2) each per district
- **Animal Bite (Snake):** Nine (9) Snake bite cases with one death was reported this week. The death was from Moyamba district. All of the cases were above five years. The highest number of cases were from Karene and Pujehun (2) each per district
- **Maternal death:** Six (6) maternal deaths were reported from WAU (2), Kono, Port Loko, Tonkolili and WAR (1) each per district
- **Yellow Fever :** Three (3) suspected cases of Yellow Fever were reported this week from Koinadugu (2), Kailahun (1). All of the cases were above five years. The cases were investigated and samples sent to CPHRL for confirmation
- **Acute Viral Hemorrhagic Fever (AVHF):** Ten (10) cases of suspected AVHF with one death was reported this week. The death was from Kenema district. Of the cases four were under five and six were above five years. The cases were investigated and samples sent to CPHRL for confirmation and all tested negative for AVHF.
- **Bacterial Meningitis:** Ten (10) cases of suspected Meningitis with one death was reported this week. The death was from WAU district. All aged under five years of age. No sample was collected for laboratory confirmation.

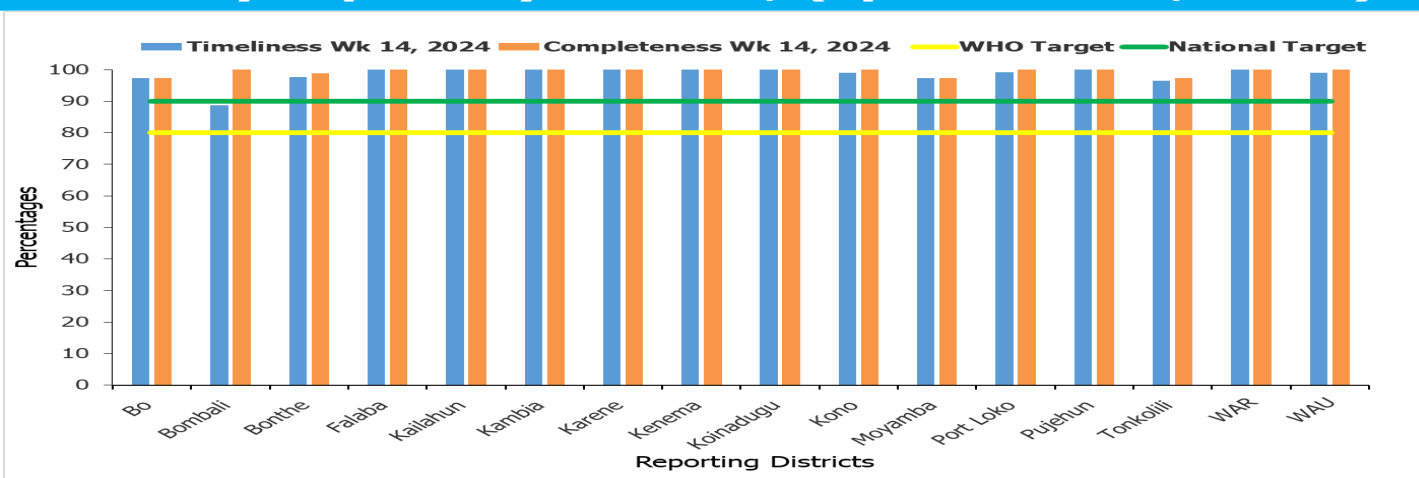
Key highlights

- 3 Diabetes Mellitus** [Age:>5 yrs.]
 - ✓ 1 each for Bo, Pujehun & W/ Urban
- 4 Perinatal death (2 stillbirths & 2 early neonatal death)**
 - ✓ 2 Stillbirth (1 Bo, 1 W/ Urban)
 - ✓ 2 Early Neonatal death (Bo)
- 1 Maternal Death:**
 - ✓ W/ Urban
- 20 RTA:**
 - ✓ 17 Bo, 1 each for Kenema, Kono & W/ Urban
- 2 Suspected Measles:**
 - ✓ 2 Port Loko
- 2 Tuberculosis:**
 - ✓ 1 each for Kono & W/ Urban
- 41 Others:** (fever, headache, abdominal pain, convulsion)

Call Summary for epi week 13, 2024

- A total of 10,831 calls were received and responded to
- 10,712 (98.9%) were prank calls and 119 (1.1%) were signals
- Out of the total signals received:
 - Death 109 (91.6%)
 - Sick 6 (5.0%)
 - Health Emergencies 1 (0.8%): ambulatory service
 - Health Information 2 (1.7%): polio inquiries
 - Referral Call 1 (0.8%): police referral
- Community 74 (62%) & Health Facility 45 (38%)

Health Facility Timeliness & Completeness of Weekly report by district, (epi week 14, 2024)

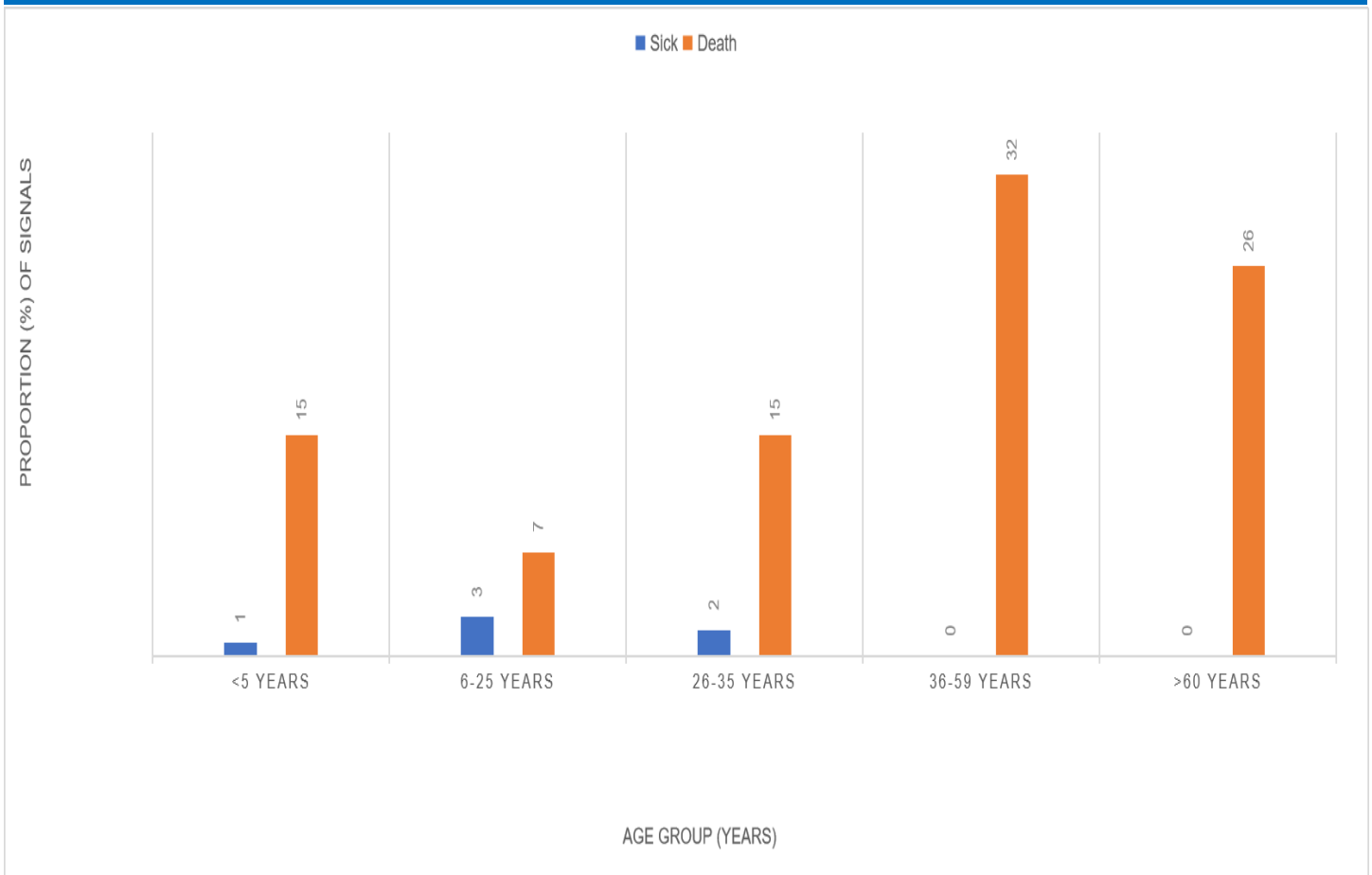


For Week 14 of 2024, 16 out of 16 districts achieved both the WHO and national targets for timeliness and completeness

Updates from the samples of suspected cases reported for week 14

- **Acute Viral Haemorrhagic Fever (AVHF):** Ten Samples of suspected AVHF were sent to the Lab this week. The samples were collected and sent to Kenema regional Lab. All of the samples however tested Negative AVHFs
- **Measles:** Ten sample of suspected measles were sent to the Lab. The turn around time for measles sample is seven days
- **Yellow fever:** Three samples of suspected yellow fever were sent to the Lab. For confirmation. The TAT for yellow fever is seven days
- **Acute Flaccid Paralysis (AFP):** Five samples of AFP were sent to the Lab. The samples were sent to CPHRL for confirmatory shipment. The TAT for

Sick and death signals by age groups, epi week 13, 2024 (n=2) (n=102)



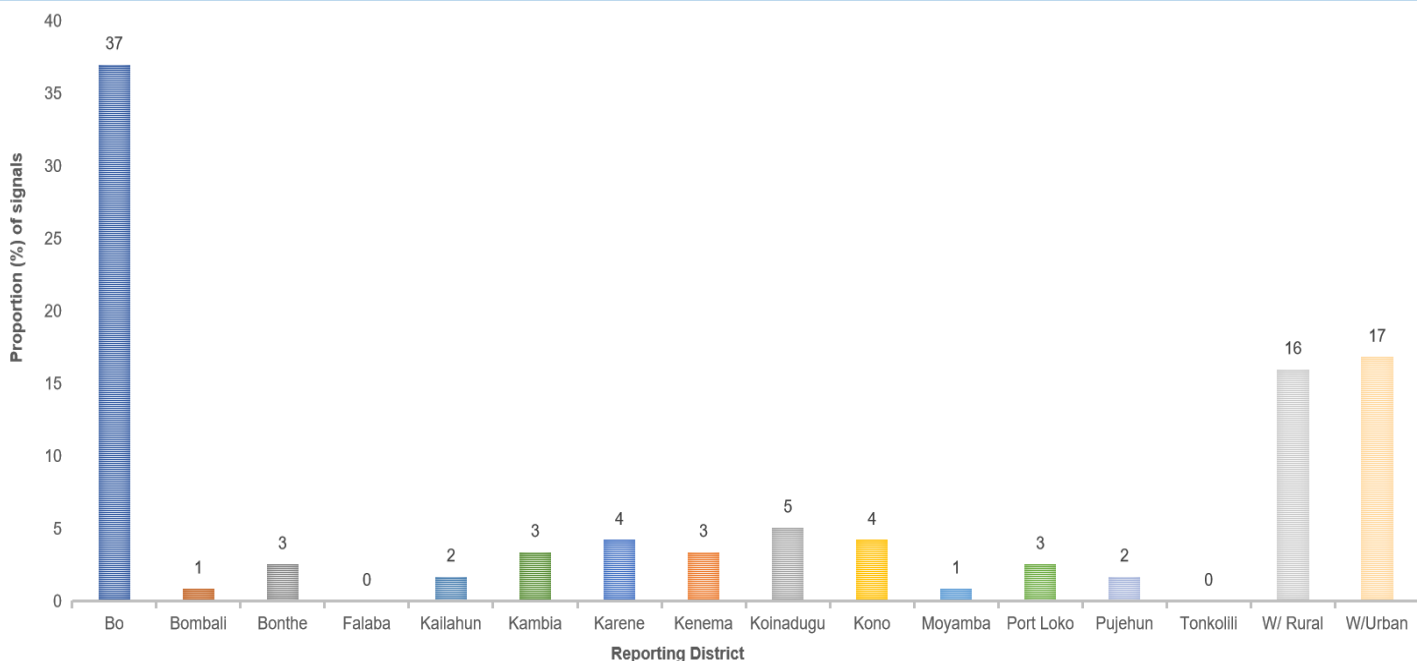
For week fourteen of 2024, a total of 115 call signals for sick and death were made of which 109 were related to deaths and 6 were for sick. The age group of 36-59 years had a higher proportion of death reported and the least was 6-25 years. For the sick cases the age groups of 6-25 years reported the highest

Submission of report by health facility via phone call, SMS, paper form or Mobile internet (epi week 14, 2024)

District	#s of Expected HFs	Call	Paper forms	SMS	Mobile SMS	Mobile internet	Mobile Total	Total Submission	% Mobile Submission
Bo	150	0	0	81	10	56	66	147	45
Bombali	97	0	0	1	8	88	96	97	99
Bonthe	89	0	0	17	3	68	71	88	81
Falaba	50	25	0	1	3	21	24	50	48
Kailahun	91	0	0	0	1	90	91	91	100
Kambia	74	0	0	0	4	70	74	74	100
Karene	62	0	0	10	5	47	52	62	84
Kenema	141	0	0	47	7	87	94	141	67
Koinadugu	67	0	0	47	3	17	20	67	30
Kono	114	0	0	76	2	35	37	113	33
Moyamba	110	57	0	0	8	42	50	107	47
Port Loko	118	0	0	0	41	76	117	117	100
Pujehun	104	0	0	2	3	99	102	104	98
Tonkolili	117	48	0	0	13	53	66	114	58
WAR	72	0	0	3	4	65	69	72	96
WAU	108	0	1	0	7	100	107	108	99
Cumulative	1564	130	1	285	122	1014	1136	1552	73
KEY:		90 - 100			75 - 89		0 - 74		

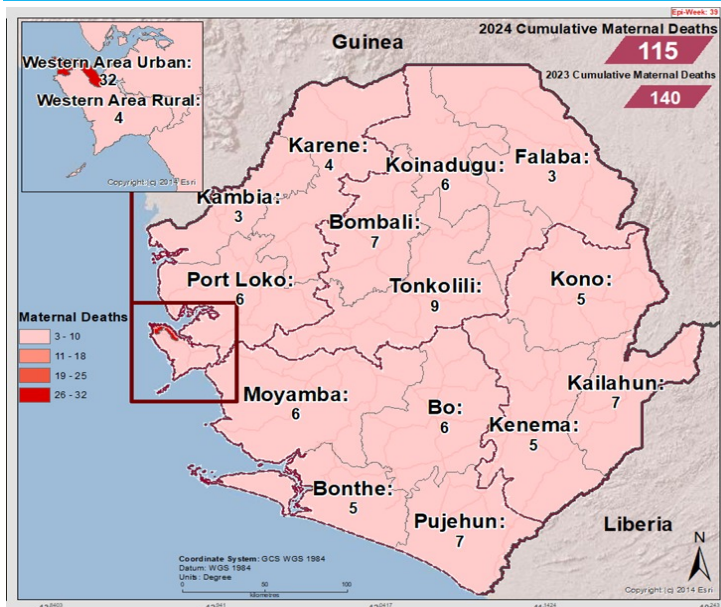
For week fourteen of 2024, a total of 1,564 facilities reported countrywide using various means of reporting. Mobile SMS and mobile internet were used exclusively by four districts (Kailahun, Kambia, Port Loko). Only one district (WAU) used paper based reporting of which, 1/72 (1.3%) of the facilities reported using paper. The country has moved from paper based reporting to electronic since 2018

Call signals by reporting districts epi week 13, 2024 (N=118)



For week fourteen of 2024, greater proportion of call signals were from Bo district closely followed by WAU district, then WAR

Cumulative Maternal Deaths reported by district (epi Week 14, 2024)



Compared Maternal Deaths reported by district (epi Week 1- 14, 2023 & 2024)

District	2023 Week 1 - 14	2024 Week 1 - 14	
Bo	25	6	↓
Bombali	3	7	↑
Bonthe	7	5	↓
Falaba	3	3	—
Kailahun	5	7	↑
Kambia	10	3	↓
Karene	4	4	—
Kenema	7	5	↓
Koinadugu	3	6	↑
Kono	8	5	↓
Moyamba	3	6	↑
Port Loko	7	6	↓
Pujehun	6	7	↑
Tonkolili	14	9	↓
Western Rural	7	4	↓
Western Urban	28	32	↑
Total	140	115	↓

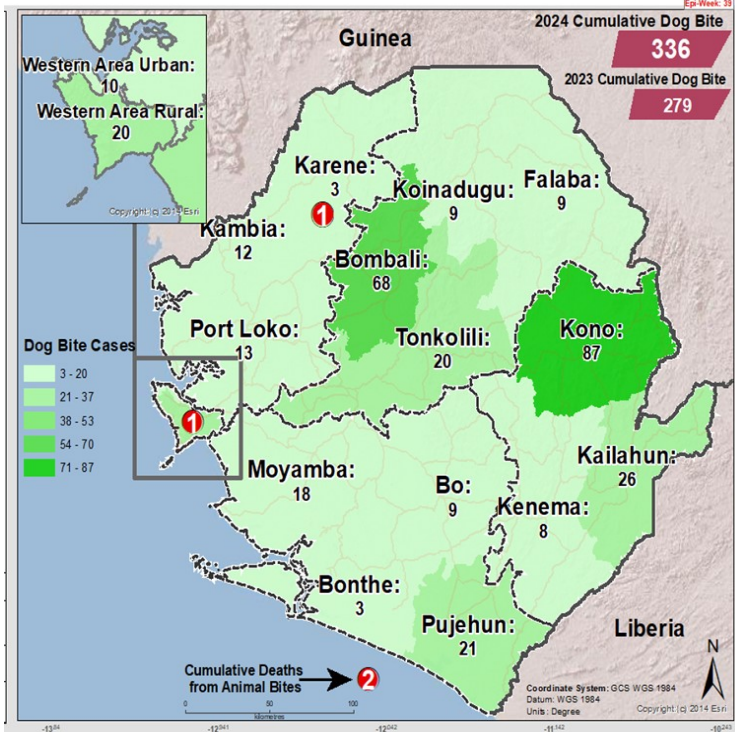
In comparison with week fourteen of 2023, week fourteen 2024 has report less maternal deaths for the same period. Six deaths were reported this week from five districts. Total maternal deaths reported since the start of the year is 115.

Maternal Deaths reported by district and Place of Occurrence (epi Week 14, 2024)

District	Health Facility	No. of Death
WAU	PCM. Hospital	2
Kono	Kono Govt. Hospital	1
Port Loko	Port Loko Govt. Hospital	1
Tonkolili	Lion Heart Hospital	1
WAR	Newton CHC	1
Total		6

In week fourteen of 2024, a total of six maternal deaths were reported from five districts. Of the six maternal deaths reported, five were from hospitals and one from PHUs. The DHMTs of the districts in question are requested to investigate the causes of the maternal deaths at the PHUs.

Cumulative Dog Bite cases reported by district (epi Week 14, 2024)

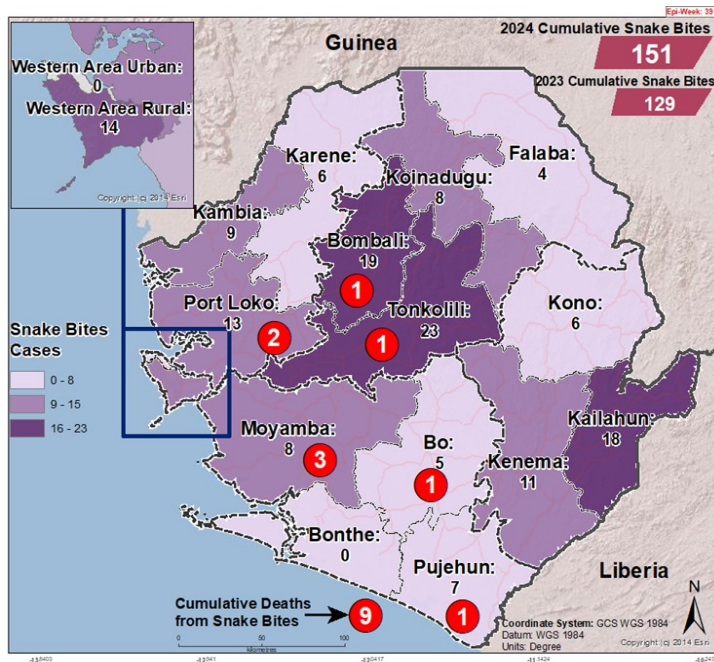


Compared Dog Bite cases reported by district (epi Week 1-13, 2023 & 2024)

District	2023 Week 1 - 13	2024 Week 1 - 13
Bo	1	8
Bombali	46	66
Bonthe	3	3
Falaba	9	8
Kailahun	26	25
Kambia	11	12
Karene	5	2
Kenema	14	7
Koinadugu	4	9
Kono	62	77
Moyamba	9	16
Port Loko	25	13
Pujehun	17	19
Tonkolili	0	20
Western Rural	13	19
Western Urban	16	10
Total	261	314

Week fourteen of 2024 has reported more dog bite cases including two deaths related to dog bite compared to 2023 same period. The highest number of cases were reported from Kono, Bombali, Kailahun, Pujehun and Tonkolili districts and the deaths were from WAR and Karene districts. Total reported cases since the start of the year is 336.

Cumulative Snake Bite cases reported by district (epi Week 14, 2024)



Compared Snake Bite cases reported by district (epi Week 1-14, 2023 & 2024)

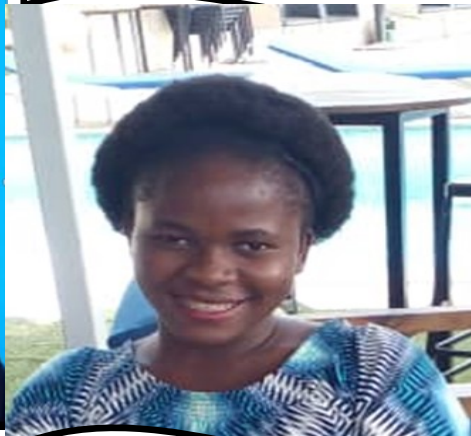
District	2023 Week 1 - 14	2024 Week 1 - 14	Change
Bo	2	5	↑
Bombali	22	19	↓
Bonthe	0	0	—
Falaba	11	4	↓
Kailahun	14	18	↑
Kambia	4	9	↑
Karene	6	6	—
Kenema	9	11	↑
Koinadugu	8	8	—
Kono	17	6	↓
Moyamba	6	8	↑
Port Loko	18	13	↓
Pujehun	10	7	↓
Tonkolili	1	23	↑
Western Rural	1	14	↑
Western Urban	0	0	—
Total	129	151	↑

Week fourteen of 2024 reported more snake bite cases compared to week fourteen of 2023 and with nine deaths related to snake bite. The deaths are from Pujehun, Port Loko, Bo, Tonkolili, Moyamba and Bombali districts. The highest number of cases were reported from Bombali, Tonkolili, Port Loko, Kailahun, and Kenema districts. Total reported cases since the start of the year is 151.

NATIONAL WEEKLY EPIDEMIOLOGICAL BULLETIN PRODUCTION TEAM



Editor: Charles Keimbe



Publisher: Mr. Harold Thomas

Co Editor: Haja Fatmata Bangura

Data Analyst: Mr. Samba Kamara

