



WEEK 13

20  24



GOVERNMENT OF SIERRA LEONE
MINISTRY OF HEALTH
NATIONAL PUBLIC HEALTH AGENCY

NATIONAL WEEKLY EPIDEMIOLOGICAL BULLETIN

WEEK 13: 25th — 31st Mar, 2024



KEY SURVEILLANCE PRIORITY DISEASE AND 117 CALL CENTRE HIGHLIGHTS FOR THE WEEK

Disease specific report Highlights

- **Acute Flaccid Paralysis (AFP):** Six (6) cases of AFP were reported this week. The cases were under five years of age from Bonthe (3), Bombali, Port Loko and Pujehun (1) each per districts. The cases were investigated and samples sent to CPHRL for confirmatory shipment
- **Measles:** One (1) case of suspected measles aged under five years was reported this week from WAU. The case was investigated and sample sent to CPHRL for confirmation
- **Animal Bite (Dog):** Twenty-one (21) Dog bite cases were reported this week. The cases were above five years of age. The highest number of cases were from Kono (7), Bombali (4) and Kailahun (3)
- **Animal Bite (Snake):** Twelve (12) Snake bite cases were reported this week. All of the cases were above five years. The highest number of cases were from Tonkolili (3), Kailahun and Moyamba (2) each per district
- **Maternal death:** Nine (9) maternal deaths were reported from WAU (4), Tonkolili (2), Bo, Bonthe and Karene (1) each per district
- **Yellow Fever :** Two (2) suspected cases of Yellow Fever were reported this week from Bonthe and WAU (1) each per district. All of the cases were above five years. The cases were investigated and samples sent to CPHRL for confirmation
- **Acute Viral Hemorrhagic Fever (AVHF):** Eight (8) cases of suspected AVHF were reported this week. Of the cases two were under five and six were above five years. The cases were investigated and samples sent to CPHRL for confirmation and all tested negative for AVHF.

Confirmed Lassa Fever: One confirmed Lassa fever case reported from Kenema District aged above five years

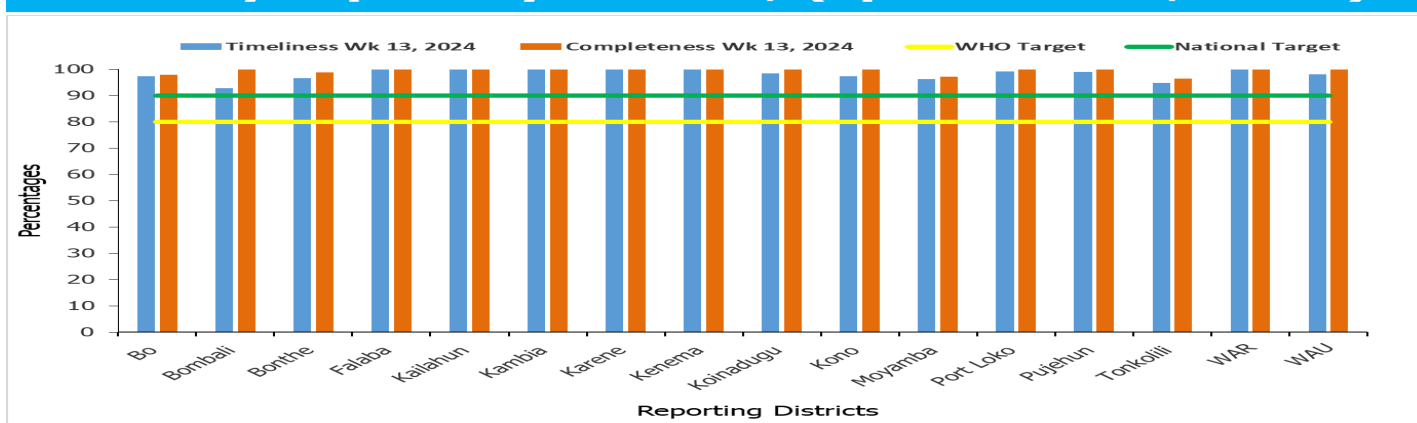
117 Call Centre Highlights

- **1 Bloody Diarrhea** [Age:>5 yrs.]
✓ Kailahun
- **3 Diabetes Mellitus** [Age:>5 yrs.]
✓ 1 each for Bo, Karene & W/ Rural
- **6 Perinatal death (5 stillbirths & 1 early neonatal death)**
✓ 5 Stillbirth (4 Bombali, 1 Port Loko)
✓ 1 Early Neonatal death (Bo)
- **1 Poliomyelitis:** [Age:<5 yrs.]
✓ Port Loko
- **1 Maternal Death:**
✓ Bo
- **2 RTA:**
✓ 1 each for Bo & Bombali
- **3 Tuberculosis:**
✓ 1 each for Koinadugu, W/ Rural & W/ Urban
- **43 Others:** (fever, headache, abdominal pain, convulsion)

Call Summary for epi week 13, 2024

- A total of 9,139 calls were received and responded to
- 9,021 (98.7%) were prank calls and 118 (1.3%) were signals
- Out of the total signals received:
 - Death 102 (86.4%)
 - Sick 2 (1.7%)
 - Health Emergencies 6 (5.1%): dog bite 2, snake bite 2, & request for ambulatory service 2
 - Health Information 7 (5.9%): polio inquiries 3, information on Kush 4
 - Referral Call 1 (0.8%): Fire incident
- Community 64 (54%) & Health Facility 54 (46%)

Health Facility Timeliness & Completeness of Weekly report by district, (epi week 13, 2024)

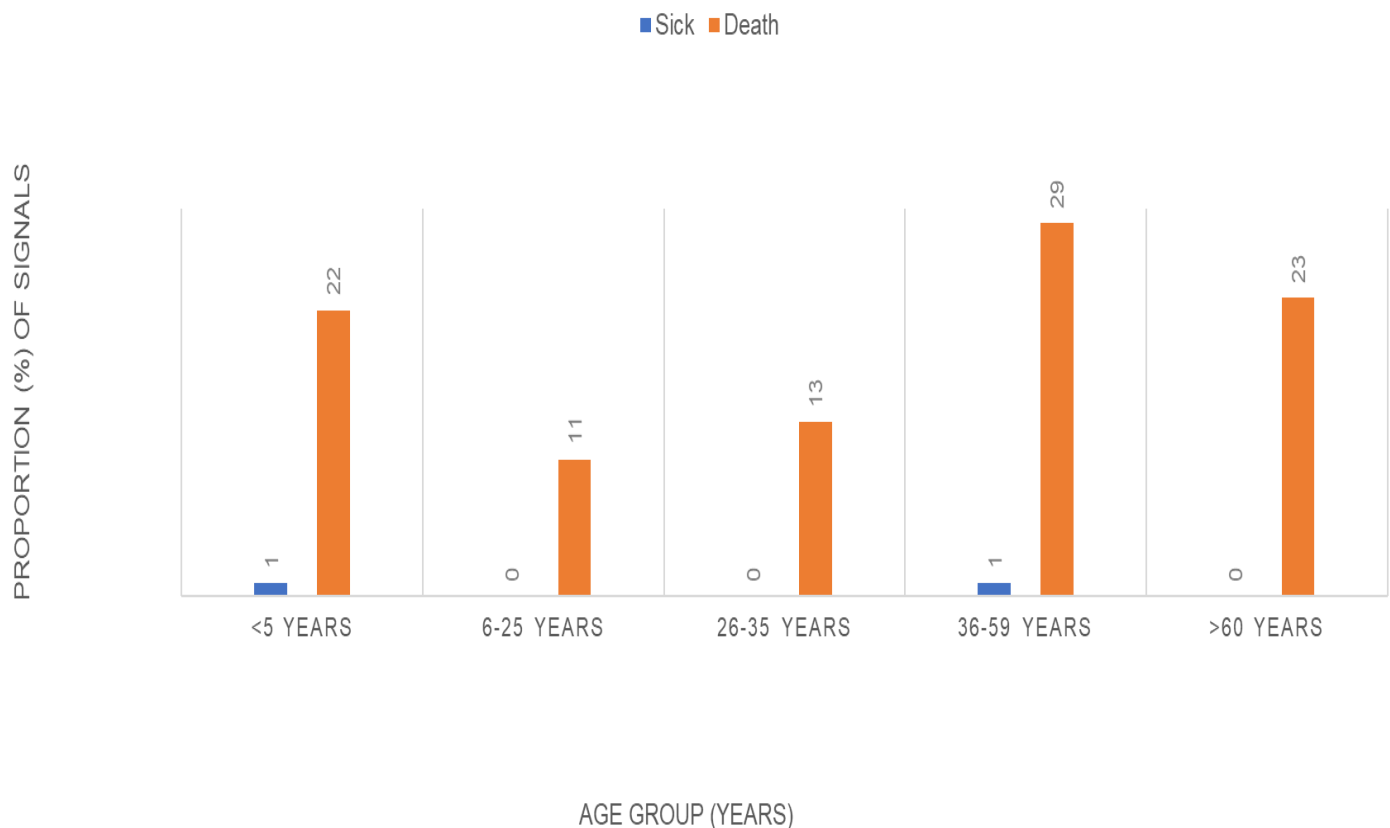


For Week 13 of 2024, 16 out of 16 districts achieved both the WHO and national targets for timeliness and completeness

Updates from the samples of suspected cases reported for week 13

- **Acute Viral Haemorrhagic Fever (AVHF):** Eight Samples of suspected AVHF were sent to the Lab this week. The samples were collected and sent to Kenema regional Lab. All of the samples however tested Negative AVHFs
- **Measles:** One sample of suspected measles was sent to the Lab. From WAU districts. The turn around time for measles sample is seven days
- **Yellow fever:** Two sample of suspected yellow fever were sent to the Lab. For confirmation. The TAT for yellow fever is seven days
- **Acute Flaccid Paralysis (AFP):** Six samples of AFP were sent to the Lab. The samples were sent to CPHRL for confirmatory shipment. The TAT for

Sick and death signals by age groups, epi week 13, 2024 (n=2) (n=102)



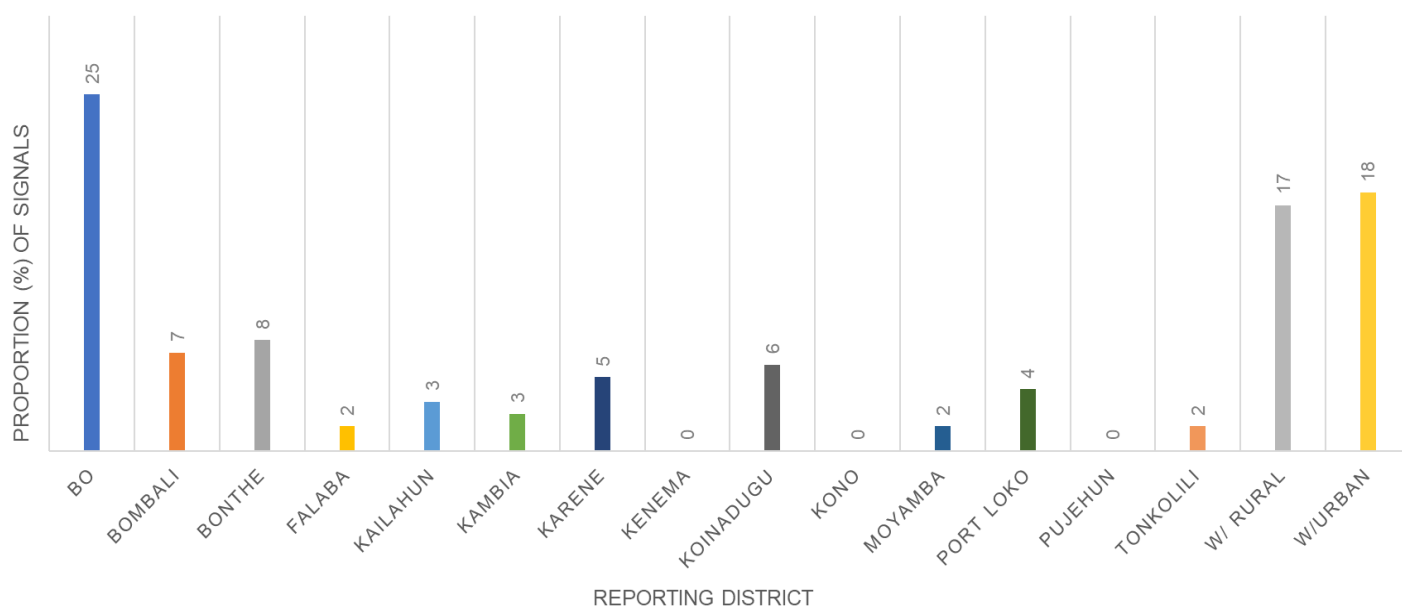
For week thirteen of 2024, a total of 104 call signals for sick and death were made of which 102 were related to deaths and 2 were for sick. The age group of 36-59years had a higher proportion of death reported and the least were 6-25 years. For the sick cases the age groups of >5 and 36-39years reported one each

Submission of report by health facility via phone call, SMS, paper form or Mobile internet (epi week 13, 2024)

District	#s of Expected HFs	Call	Paper forms	SMS	Mobile SMS	Mobile internet	Mobile Total	Total Submission	% Mobile Submission
Bo	150	2	0	78	9	58	67	147	46
Bombali	97	0	0	9	9	79	88	97	91
Bonthe	89	0	0	17	5	66	71	88	81
Falaba	50	21	0	1	10	18	28	50	56
Kailahun	91	0	0	0	3	88	91	91	100
Kambia	74	0	0	0	6	68	74	74	100
Karene	62	0	0	11	5	46	51	62	82
Kenema	141	0	0	48	12	81	93	141	66
Koinadugu	67	0	0	48	3	15	18	66	27
Kono	114	0	0	69	2	43	45	114	39
Moyamba	110	54	0	0	11	42	53	107	50
Port Loko	118	0	0	0	52	66	118	118	100
Pujehun	104	0	0	1	6	97	103	104	99
Tonkolili	117	49	0	0	13	51	64	113	57
WAR	72	1	1	1	4	65	69	72	96
WAU	108	0	0	0	6	102	108	108	100
Cumulative	1564	127	1	283	156	985	1141	1552	74
KEY:		90 - 100			75 - 89		0 - 74		

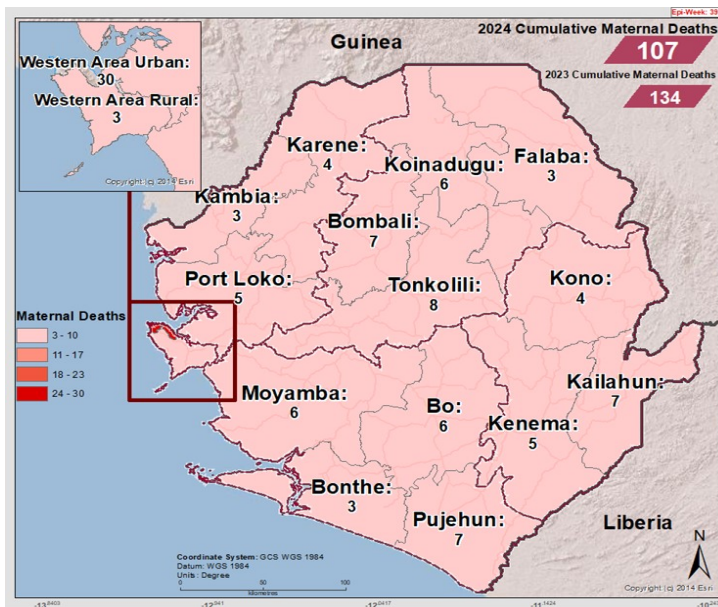
For week thirteen of 2024, a total of 1,564 facilities reported countrywide using various means of reporting. Mobile SMS and mobile internet were used exclusively by four districts (Kailahun, Kambia, Port Loko and WAU). Only one district (WAR) used paper based reporting of which, 1/72 (1.3%) of the facilities reported using paper. The country has moved from paper based reporting to electronic since 2018

Call signals by reporting districts epi week 13, 2024 (N=118)



For week thirteen of 2024, greater proportion of call signals were from Bo district closely followed by WAU district, then WAR district. 3/16 (18.75%) of districts made zero call.

Cumulative Maternal Deaths reported by district (epi Week 13, 2024)



Compared Maternal Deaths reported by district (epi Week 1- 13, 2023 & 2024)

District	2023 Week 1 - 13	2024 Week 1 - 13	
Bo	24	6	↓
Bombali	3	7	↑
Bonthe	7	3	↓
Falaba	3	3	—
Kailahun	5	7	↑
Kambia	10	3	↓
Karene	4	4	—
Kenema	7	5	↓
Koinadugu	3	6	↑
Kono	8	4	↓
Moyamba	3	6	↑
Port Loko	6	5	↓
Pujehun	6	7	↑
Tonkolili	13	8	↓
Western Rural	6	3	↓
Western Urban	26	30	↑
Total	134	107	↓

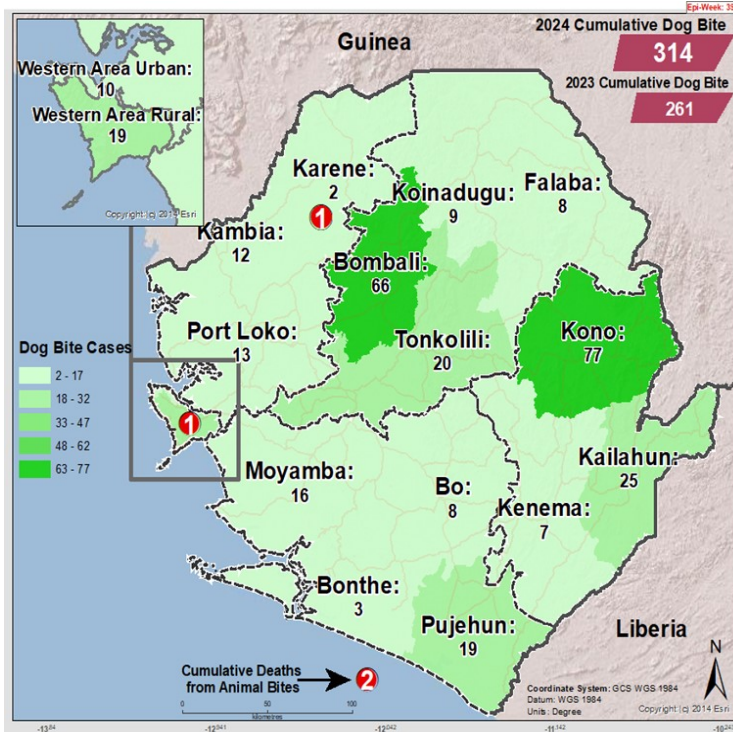
In comparison with week thirteen of 2023, week thirteen 2024 has report less maternal deaths for the same period. Nine deaths were reported this week from five districts. Total maternal deaths reported since the start of the year is 107.

Maternal Deaths reported by district and Place of Occurrence (epi Week 13, 2024)

District	Health Facility	No. of Death
WAU	PCM. Hospital	4
Tonkolili	Magburaka Govt. Hospital	2
Bo	Makoba MCHP	1
Bonthe	Madina (Bum) CHC	1
Karene	Kamakwie Wesleyan Hospital	1
Total		9

In week thirteen of 2024, a total of nine maternal deaths were reported from five districts. Of the nine maternal deaths reported, seven were from hospitals and two from PHUs. The DHMTs of the districts in question are requested to investigate the causes of the maternal deaths at the PHUs.

Cumulative Dog Bite cases reported by district (epi Week 13, 2024)

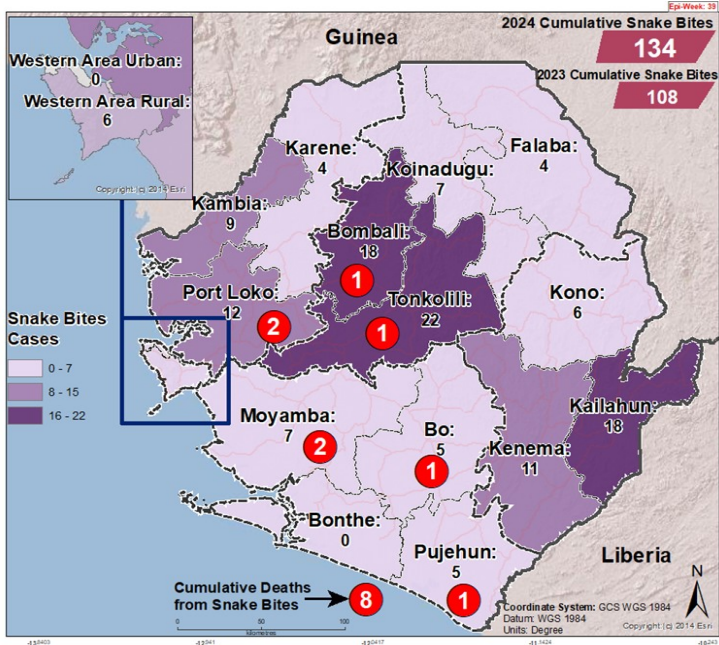


Compared Dog Bite cases reported by district (epi Week 1- 13, 2023 & 2024)

District	2023 Week 1 - 13	2024 Week 1 - 13
Bo	1	8
Bombali	46	66
Bonthe	3	3
Falaba	9	8
Kailahun	26	25
Kambia	11	12
Karene	5	2
Kenema	14	7
Koinadugu	4	9
Kono	62	77
Moyamba	9	16
Port Loko	25	13
Pujehun	17	19
Tonkolili	0	20
Western Rural	13	19
Western Urban	16	10
Total	261	314

Week thirteen of 2024 has reported more dog bite cases including two deaths related to dog bite compared to 2023 same period. The highest number of cases were reported from Kono, Bombali, Kailahun, Pujehun and Tonkolili districts and the deaths were from WAR and Karene districts. Total reported cases since the start of the year is 314.

Cumulative Snake Bite cases reported by district (epi Week 13, 2024)



Compared Snake Bite cases reported by district (epi Week 1 - 13, 2023 & 2024)

District	2023 Week 1 - 13	2024 Week 1 - 13	
Bo	2	5	↑
Bombali	18	18	—
Bonthe	0	0	—
Falaba	10	4	↓
Kailahun	10	18	↑
Kambia	3	9	↑
Karene	6	4	↓
Kenema	8	11	↑
Koinadugu	8	7	↓
Kono	13	6	↓
Moyamba	5	7	↑
Port Loko	15	12	↓
Pujehun	8	5	↓
Tonkolili	1	22	↑
Western Rural	1	6	↑
Western Urban	0	0	—
Total	108	134	↑

Week thirteen of 2024 reported more snake bite cases compared to week thirteen of 2023 and with eight deaths related to snake bite. The deaths are from Pujehun, Port Loko, Bo, Tonkolili, Moyamba and Bombali districts. The highest number of cases were reported from Bombali, Tonkolili, Port Loko, Kailahun, and Kenema districts. Total reported cases since the start of the year is 134.

NATIONAL WEEKLY EPIDEMIOLOGICAL BULLETIN PRODUCTION TEAM



Editor: Charles Keimbe



Publisher: Mr. Harold Thomas

Co Editor: Haja Fatmata Bangura

Data Analyst: Mr. Samba Kamara

