



WEEK 12

20 24



GOVERNMENT OF SIERRA LEONE
MINISTRY OF HEALTH
NATIONAL PUBLIC HEALTH AGENCY

NATIONAL WEEKLY EPIDEMIOLOGICAL BULLETIN

WEEK 13: 25th — 31st Mar, 2024



KEY SURVEILLANCE PRIORITY DISEASE AND 117 CALL CENTRE HIGHLIGHTS FOR THE WEEK

Disease specific report Highlights

- **Acute Flaccid Paralysis (AFP):** Eight (8) cases of AFP were reported this week. The cases were under five years of age from Kenema (3), Bo, Bombali and Tonkolili (1) each per districts. The cases were investigated and samples sent to CPHRL for confirmatory shipment
- **Measles:** Ten(10) cases of measles were reported this week. Of the cases seven were under five and three were above five years of age from Kaene (4), Port Loko (3), WAU (2) and Tonkolili (1). The cases were investigated and samples sent to CPHRL for confirmation
- **Animal Bite (Dog):** Thirty-one (31) Dog bite cases were reported this week. Of the cases nine were under five and twenty-two were above five years of age. The highest number of cases were from Kailahun (11), Bombali (8) and Kono (4)
- **Animal Bite (Snake):** Ten (10) Snake bite cases were reported this week. All of the cases were above five years .The highest number of cases were from Tonkolili (4), Kailahun (3), Bombali, Kailahun and Port Loko (1) each per district
- **Maternal death:** Twelve (12) maternal deaths were reported from Koinadugu, Moyamba and WAU (2), Bo, Bombali, Kambia, Kenema, Kono and Tonkolili (1) each per district
- **Yellow Fever :**Four (4) suspected cases of Yellow Fever were reported this week from WAR (2), Kenema and Port Loko (1). All of the cases were above five years. The cases were investigated and samples sent to CPHRL for confirmation
- **Acute Viral Hemorrhagic Fever (AVHF):** Eleven (11) cases of suspected AVHF with one death was reported this week. The death was from Kenema district. Of the cases three were under five and eight were above five years. The cases were investigated and samples sent to CPHRL for confirmation and all tested negative for AVHF.
- **Bacterial Meningitis:** Three (3) cases of suspected Meningitis were reported from WAU. All aged under five years of age. No sample was collected for laboratory confirmation.

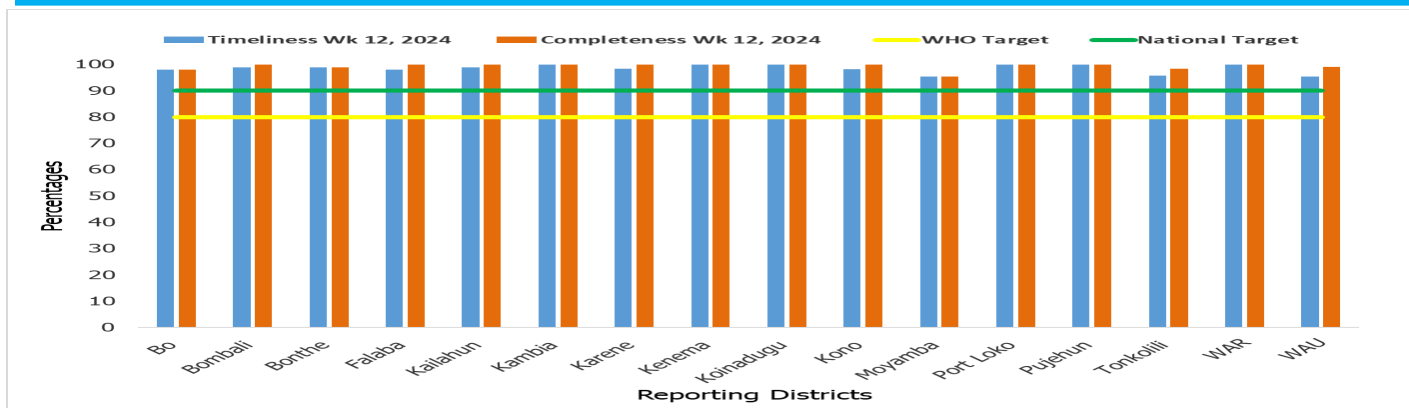
117 Call Centre Highlights

- **5 Bloody Diarrhea** [Age: 4, >5 yrs. 1, <5 yrs.]
 - ✓ 4 Kailahun
 - ✓ 1 Port Loko
- **1 Diabetes Mellitus** [Age:>5 yrs.]
 - ✓ Karene
- **10 Perinatal death (9 stillbirths & 1 early neonatal death)**
 - ✓ 9 Stillbirth (6 Bombali, 1 each for Bonthe, Koinadugu & W/ Urban)
 - ✓ 1 Early Neonatal death (Bombali)
- **3 Maternal Death:**
 - ✓ 2 Koinadugu
 - ✓ 1 W/ Urban
- **1 RTA:**
 - ✓ W/ Urban
- **1 Tuberculosis:**
 - ✓ W/ Urban
- **48 Others:** (fever, headache, abdominal pain, convulsion)

Call Summary for epi week 12, 2024

- A total of 6,960 calls were received and responded to
- 6,825 (98.1%) were prank calls and 135 (1.9%) were signals
- Out of the total signals received:
 - Death 117 (86.7%)
 - Sick 7 (5.2%)
 - Health Emergencies 7 (5.2%): dog bite 3, snake bite 2, RTA 1, & request for ambulatory service 1
 - Health Information 3 (2.2%): Polio inquiries
 - Referral Call 1 (0.7%): Fire incident
- Community 70 (52%) & Health Facility 65 (48%)

Health Facility Timeliness & Completeness of Weekly report by district, (epi week 12, 2024)

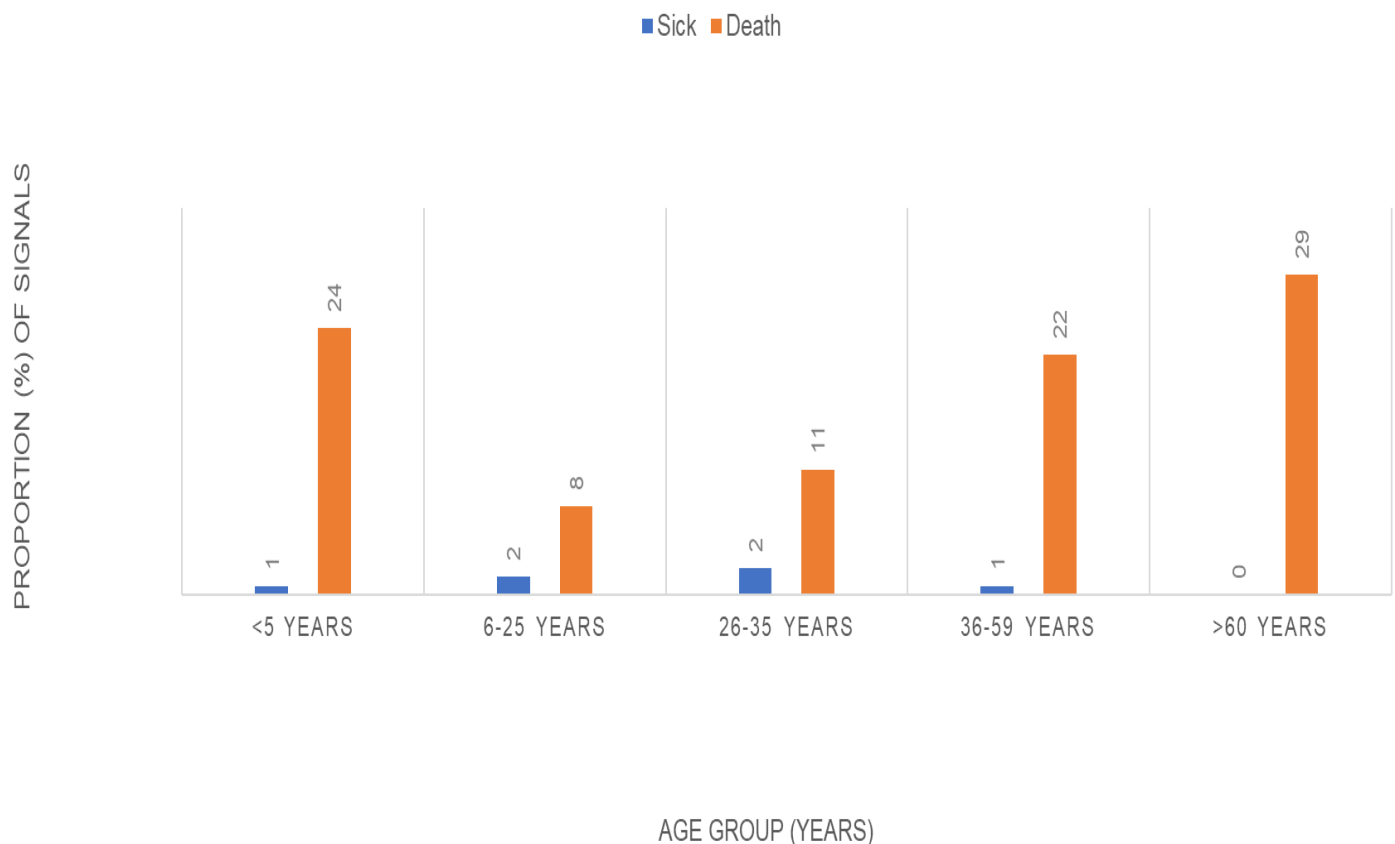


For Week 12 of 2024, 16 out of 16 districts achieved both the WHO and national targets for timeliness and completeness

Updates from the samples of suspected cases reported for week 11

- **Acute Viral Haemorrhagic Fever (AVHF):** Eleven Samples of suspected AVHF were sent to the Lab this week. The samples were collected and sent to Kenema regional Lab. All of the samples however tested Negative AVHFs
- **Measles:** Ten samples of suspected measles were sent to the Lab. From Port Loko and Kono districts. The turn around time for measles sample is seven days
- **Yellow fever:** Four sample of suspected yellow fever were sent to the Lab. For confirmation. The TAT for yellow fever is seven days
- **Acute Flaccid Paralysis (AFP):** Eight samples of AFP were sent to the Lab. The samples were sent to CPHRL for confirmatory shipment. The TAT for

Sick and death signals by age groups, epi week 12, 2024 (n=7) (n=117)



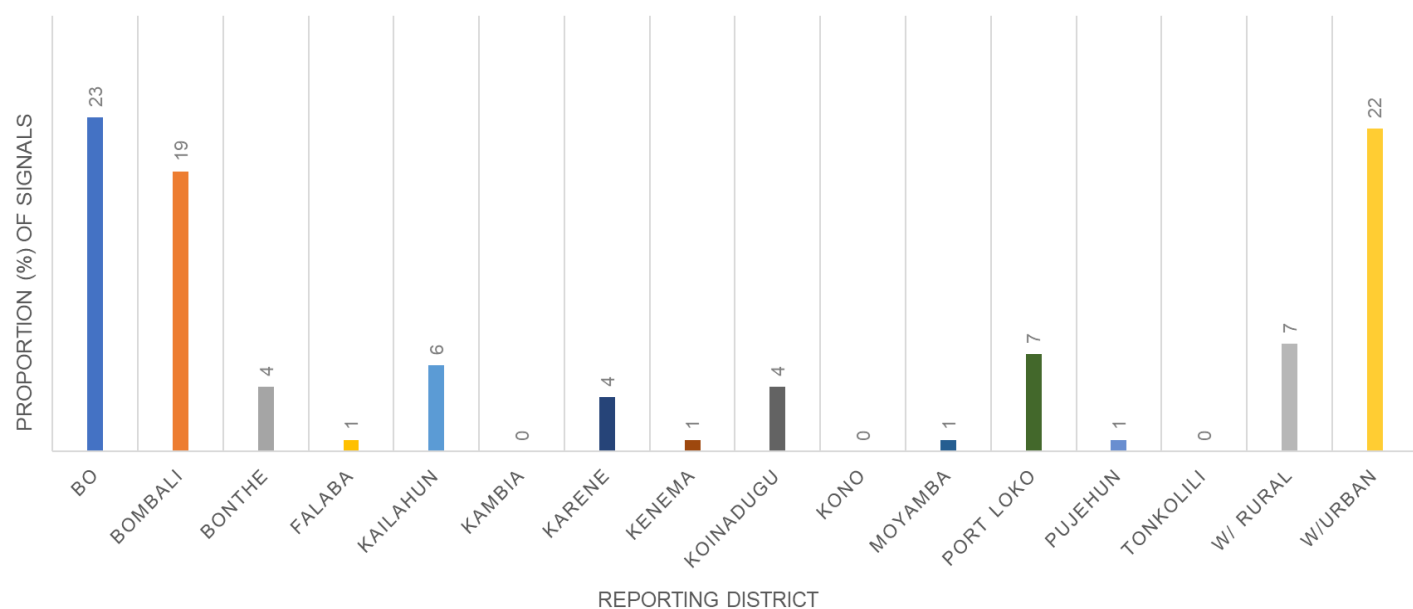
For week twelve of 2024, a total of 124 call signals for sick and death were made of which 117 were related to deaths and 7 were for sick. The age group of > 60 had a higher proportion of death reported and the least were 6-25 years. For the sick cases the age groups of 6-25 and 26-35 years reported two each

Submission of report by health facility via phone call, SMS, paper form or Mobile internet (epi week 12, 2024)

District	#s of Expected HFs	Call	Paper forms	SMS	Mobile SMS	Mobile internet	Mobile Total	Total Submission	% Mobile Submission
Bo	150	1	0	78	7	61	68	147	46
Bombali	97	0	0	1	7	89	96	97	99
Bonthe	89	0	0	17	4	67	71	88	81
Falaba	50	20	0	3	12	15	27	50	54
Kailahun	91	0	0	0	2	89	91	91	100
Kambia	74	0	0	0	2	72	74	74	100
Karene	62	0	0	8	8	46	54	62	87
Kenema	141	2	0	42	12	85	97	141	69
Koinadugu	67	0	0	51	3	13	16	67	24
Kono	114	0	0	63	3	46	49	112	44
Moyamba	110	48	0	0	11	46	57	105	54
Port Loko	118	0	0	0	34	84	118	118	100
Pujehun	104	0	0	1	4	99	103	104	99
Tonkolili	117	50	0	1	16	47	63	114	55
WAR	72	1	2	0	2	67	69	72	96
WAU	108	0	0	0	9	98	107	107	100
Cumulative	1564	122	2	265	136	1024	1160	1549	75
KEY:		90 - 100		75 - 89		0 - 74			

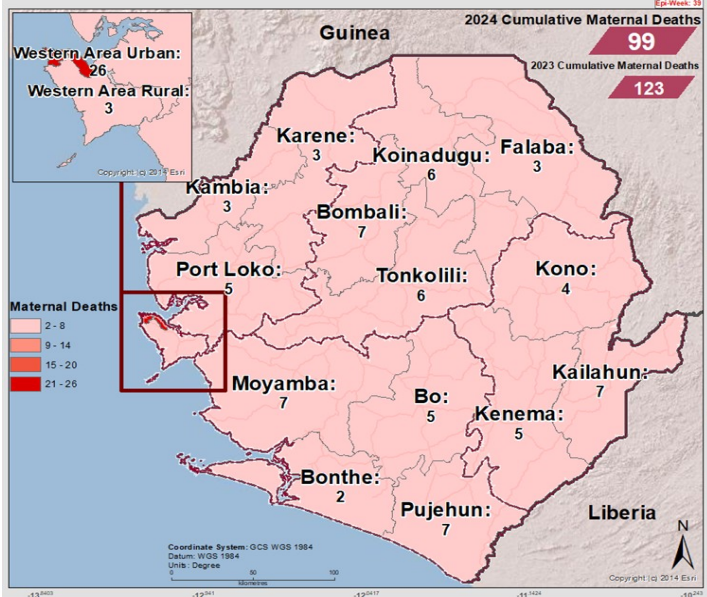
For week twelve of 2024, a total of 1,564 facilities reported countrywide using various means of reporting. Mobile SMS and mobile internet were used exclusively by four districts (Kailahun, Kambia, Port Loko and WAU). Only one district (WAR) used paper based reporting of which, 2/72 (2.7%) of the facilities reported using paper. The country has moved from paper based reporting to electronic since 2018

Call signals by reporting districts epi week 12, 2024 (N=135)



For week twelve of 2024, greater proportion of call signals were from WAU district closely followed by Bo district, then WAR district. 3/16 (18.75%) of districts made zero call.

Cumulative Maternal Deaths reported by district (epi Week 12, 2024)



Compared Maternal Deaths reported by district (epi Week 12, 2024)

District	2023 Week 1 - 12	2024 Week 1 - 12	
Bo	21	5	↓
Bombali	3	7	↑
Bonthe	7	2	↓
Falaba	3	3	↔
Kailahun	5	7	↑
Kambia	9	3	↓
Karene	4	3	↓
Kenema	6	5	↓
Koinadugu	1	6	↑
Kono	8	4	↓
Moyamba	3	7	↑
Port Loko	6	5	↓
Pujehun	6	7	↑
Tonkolili	11	6	↓
Western Rural	5	3	↓
Western Urban	25	26	↑
Total	123	99	↓

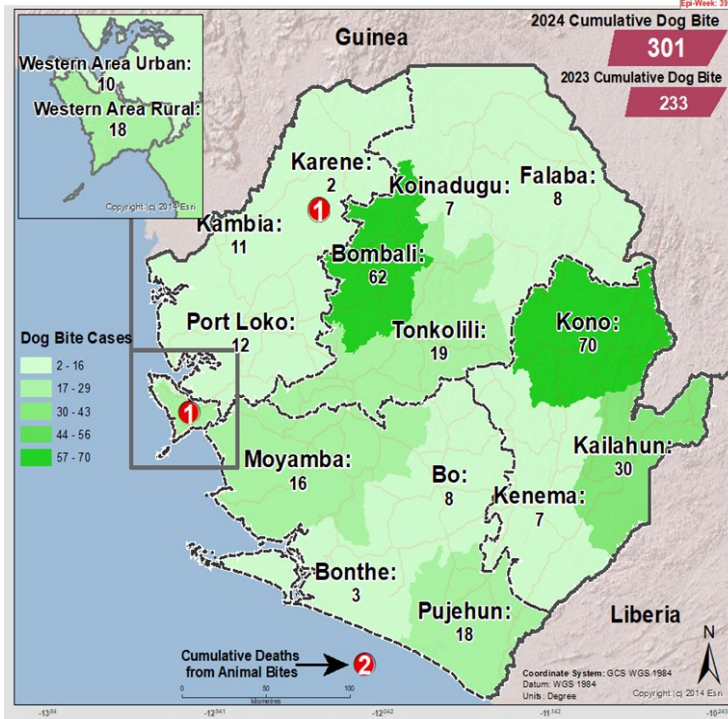
In comparison with week eleven of 2023, week eleven 2024 has report less maternal deaths for the same period. twelve deaths were reported this week from nine districts. Total maternal deaths reported since the start of the year is ninety-nine (99).

Maternal Deaths reported by district and Place of Occurrence (epi Week 12, 2024)

District	Health Facility	No. of Death
WAU	PCM. Hospital	2
Moyamba	Bai Largo MCHP	1
	Moyamba Govt. Hospital	1
Koinadugu	Kabala Govt. Hospital	2
Bo	Bo Govt. Hospital	1
Bombali	Makeni Govt. Hospital	1
Kambia	Kambia Govt. Hospital	1
Kenema	MSF Hospital	1
Kono	Koidu Govt. Hospital	1
Tonkolili	Magburaka Govt. Hospital	1
Total		12

In week twelve of 2024, a total of twelve maternal deaths were reported from nine districts. Of the twelve maternal deaths reported, eleven were from hospitals and one from PHU. The DHMTs of the districts in question are requested to investigate the causes of the maternal deaths at the PHUs.

Cumulative Dog Bite cases reported by district (epi Week 12, 2024)

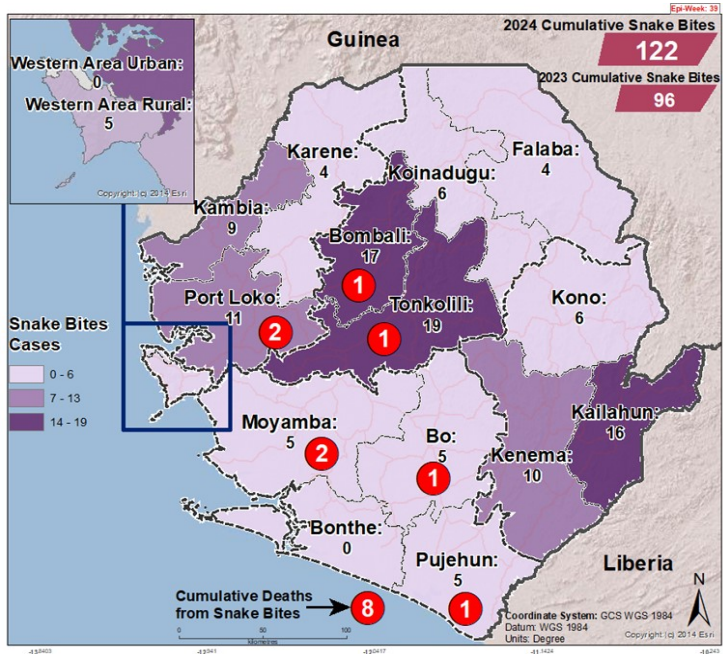


Compared Dog Bite cases reported by district (epi Week 1-12, 2023 & 2024)

District	2023 Week 1 - 12	2024 Week 1 - 12	
Bo	1	8	↑
Bombali	40	62	↑
Bonthé	3	3	—
Falaba	8	8	—
Kailahun	24	30	↑
Kambia	10	11	↑
Karene	5	2	↓
Kenema	13	7	↓
Koinadugu	3	7	↑
Kono	55	70	↑
Moyamba	9	16	↑
Port Loko	24	12	↓
Pujehun	14	18	↑
Tonkolili	0	19	↑
Western Rural	11	18	↑
Western Urban	13	10	↓
Total	233	301	↑

Week twelve of 2024 has reported more dog bite cases including two deaths related to dog bite compared to 2023 same period. The highest number of cases were reported from Kono, Bombali, Kailahun, Pujehun and Tonkolili districts and the deaths were from WAR and Karene districts. Total reported cases since the start of the year is 301.

Cumulative Snake Bite cases reported by district (epi Week 12, 2024)



Compared Snake Bite cases reported by district (epi Week 1-12, 2023 & 2024)

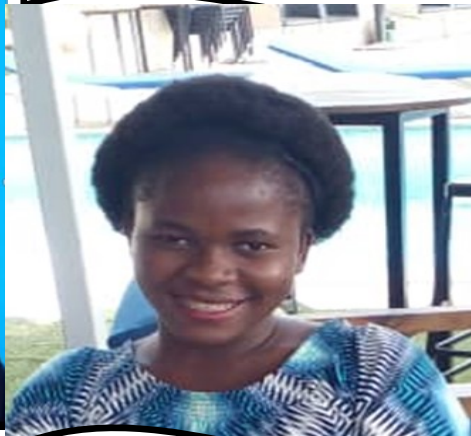
District	2023 Week 1 - 12	2024 Week 1 - 12	
Bo	2	5	↑
Bombali	16	17	↑
Bonthé	0	0	—
Falaba	8	4	↓
Kailahun	9	16	↑
Kambia	3	9	↑
Karene	5	4	↓
Kenema	8	10	↑
Koinadugu	6	6	—
Kono	13	6	↓
Moyamba	4	5	↑
Port Loko	12	11	↓
Pujehun	8	5	↓
Tonkolili	1	19	↑
Western Rural	1	5	↑
Western Urban	0	0	—
Total	96	122	↑

Week twelve of 2024 reported more snake bite cases compared to week twelve of 2023 and with twelve deaths related to snake bite. The deaths are from Pujehun, Port Loko, Kailahun, Port Loko, Kenema, Tonkolili, Moyamba and Bombali districts. The highest number of cases were reported from Bombali, Tonkolili, Port Loko, Kailahun, and Kenema districts. Total reported cases since the start of the year is 122.

NATIONAL WEEKLY EPIDEMIOLOGICAL BULLETIN PRODUCTION TEAM



Editor: Charles Keimbe



Publisher: Mr. Harold Thomas

Co Editor: Haja Fatmata Bangura

Data Analyst: Mr. Samba Kamara

