



20  24



WEEK 11

GOVERNMENT OF SIERRA LEONE  
MINISTRY OF HEALTH  
NATIONAL PUBLIC HEALTH AGENCY

## ***NATIONAL WEEKLY EPIDEMIOLOGICAL BULLETIN***

WEEK 11: 11th — 17th Mar, 2024



# KEY SURVEILLANCE PRIORITY DISEASE AND 117 CALL CENTRE HIGHLIGHTS FOR THE WEEK

## Disease specific report Highlights

- **Acute Flaccid Paralysis (AFP):** Six (6) cases of AFP were reported this week. The cases were under five years of age from Kenema (3), Tonkolili (2), and Moyamba (1) each per districts. The cases were investigated and samples sent to CPHRL for confirmatory shipment
- **Measles:** Six (6) cases of suspected measles were reported this week. Of the cases four were under five and two were above five years of age from Port Loko (4), Kono (2). The cases were investigated and samples sent to CPHRL for confirmation
- **Animal Bite (Dog):** Twenty-six (26) Dog bite cases were reported this week. All of the cases were above five years of age. The highest number of cases were from Kono (9), Moyamba (4), Kailahun (3)
- **Animal Bite (Snake):** Eight (8) Snake bite cases with one death was reported this week. The death was from Port Loko district. All of the cases were above five years. The highest number of cases were from Bombali, Kailahun, Karene, Koinadugu, Moyamba, Port Loko, Tonkolili and WAR (1) each per district
- **Maternal death:** Eleven (11) maternal deaths were reported from WAU (5) Bombali (2), while Falaba, Kailahun, Kono and Pujehun (1) each per district
- **Yellow Fever :** One (1) suspected case of Yellow Fever aged above five years was reported this week from WAR. The case was investigated and sample sent to CPHRL for confirmation
- **Acute Viral Hemorrhagic Fever (AVHF):** Eight (8) cases of suspected AVHF with two death were reported this week. The deaths were from Kenema and WAU district. Of the cases two were under five and six were above five years. The cases were investigated and samples sent to CPHRL for confirmation and all tested negative for AVHF.
- **Bacterial Meningitis:** One (1) case of suspected Meningitis was reported from WAU, aged above five years. No sample was collected for laboratory confirmation.

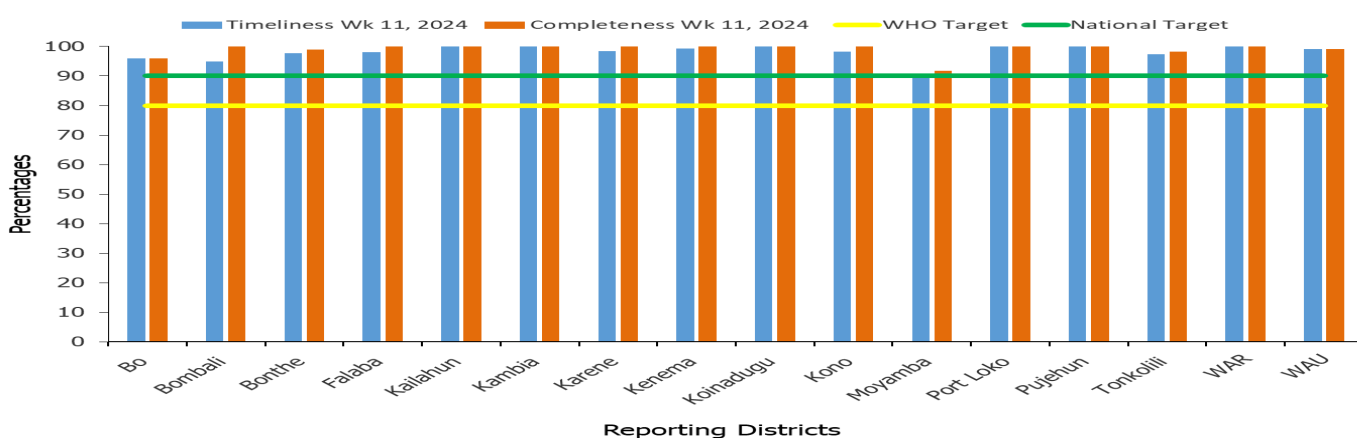
## 117 Call Centre Highlights

- **2 Bloody Diarrhea** [Age:>5 yrs.]  
✓ Kailahun
- **2 Diabetes Mellitus** [Age:>5 yrs.]  
✓ 1 each (Kono & W/ Urban)
- **1 Drug Abuse- Kush:** [Age:>5 yrs.]  
✓ Bo
- **2 Suspected Measles** [Age:<5 yrs.]  
✓ Kailahun
- **5 Perinatal death (4 stillbirths & 1 early neonatal death)**  
✓ 4 Stillbirth (1 each for Bo, Bonthe, Kenema & W/ Rural)  
✓ 1 Early Neonatal death (Bo)
- **4 Maternal Death:**  
✓ 1 each (Bo & Moyamba), 2 Port Loko
- **2 Tuberculosis:**  
✓ W/ Urban
- **44 Others:** (fever, headache, abdominal pain, convulsion)

## Call Summary for epi week 11, 2024

- A total of 9,688 calls received and responded to
- 9,554 (98.6%) were prank calls and 134 (1.4%) were signals
- Out of the total signals received:
  - Death 117 (87.3%)
  - Health Emergencies 5 (3.7%): dog bite 2 & request for ambulatory service 3
  - Sick 3 (2.2%)
  - Health Information 6 (4.5%): Polio inquiries 5 & COVID-19 inquiries 1
  - Referral Call 3 (2.2%): Fire incident 3
  - Health Facility 54 (40%) Community 80 (60%)

## Health Facility Timeliness & Completeness of Weekly report by district, (epi week 11, 2024)

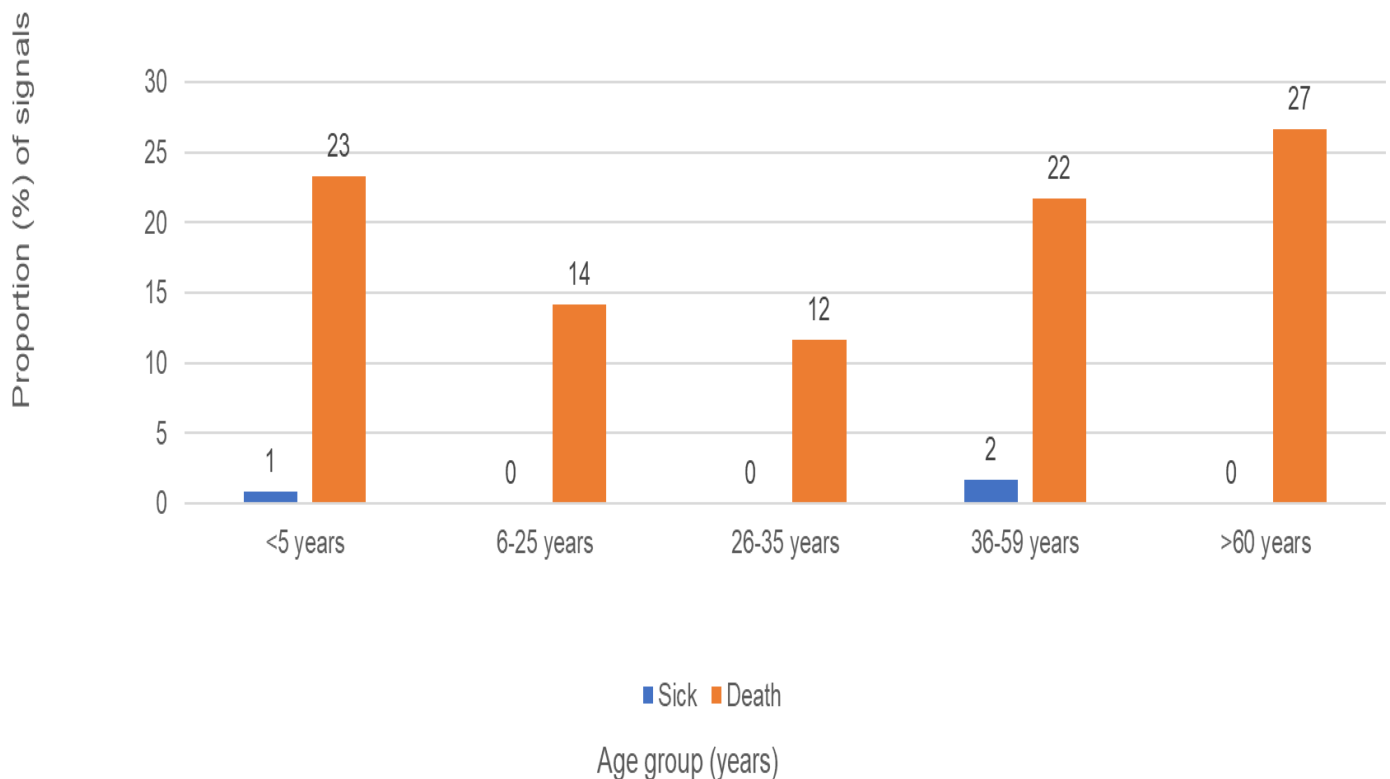


For Week 11 of 2024, 16 out of 16 districts achieved both the WHO and national targets for timeliness and completeness

## Updates from the samples of suspected cases reported for week 11

- **Acute Viral Haemorrhagic Fever (AVHF):** Eight Samples of suspected AVHF were sent to the Lab this week. The samples were collected and sent to Kenema regional Lab. All of the samples however tested Negative AVHFs
- **Measles:** Six samples of suspected measles were sent to the Lab. From Port Loko and Kono districts. The turn around time for measles sample is seven days
- **Yellow fever:** One sample of suspected yellow fever was sent to the Lab. For confirmation. The TAT for yellow fever is seven days
- **Acute Flaccid Paralysis (AFP):** Six samples of AFP were sent to the Lab. The samples were sent to CPHRL for confirmatory shipment. The TAT for

## Sick and death signals by age groups, epi week 11, 2024 (n=3) (n=117)



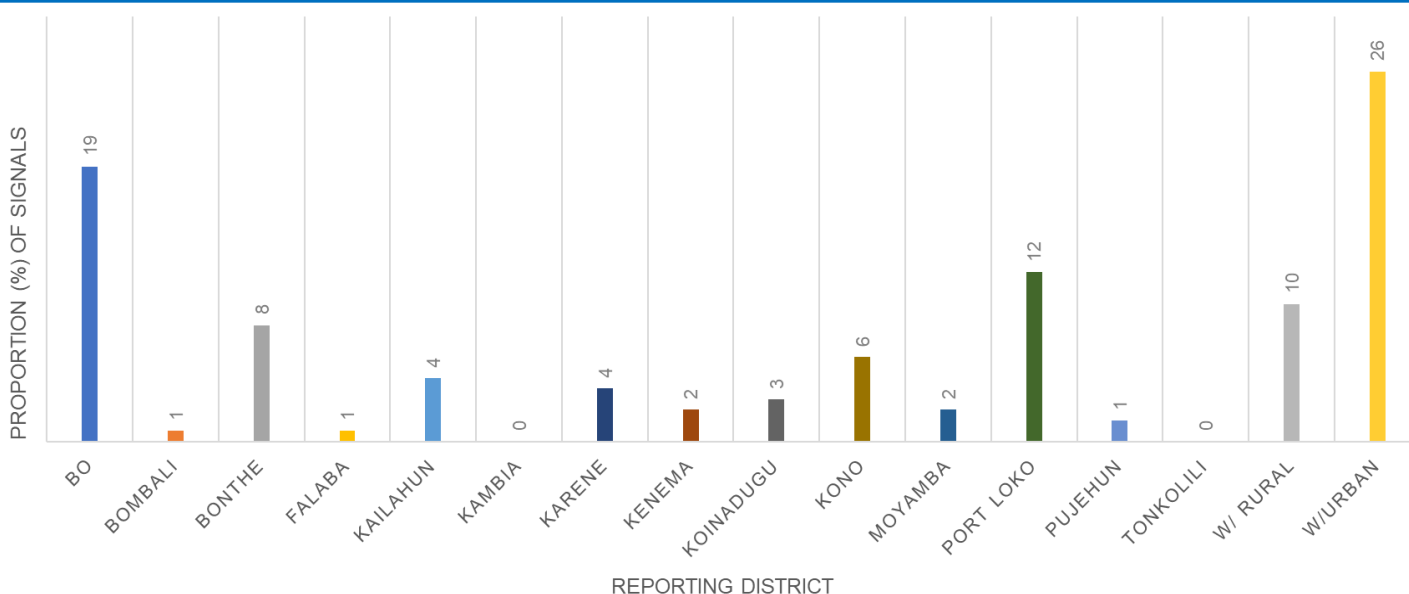
For week eleven of 2024, a total of 120 call signals for sick and death were made of which 117 were related to deaths and 3 were for sick. The age group of > 60 had a higher proportion of death reported and the least was 26-35years. For the sick cases the age group of 36-59 years reported the highest

## Submission of report by health facility via phone call, SMS, paper form or Mobile internet (epi week 11, 2024)

District	#s of Expected HFs	Call	Paper forms	SMS	Mobile SMS	Mobile internet	Mobile Total	Total Submission	% Mobile Submission
Bo	150	0	0	75	9	63	72	147	49
Bombali	97	0	0	3	8	84	92	95	97
Bonthe	89	1	0	16	6	65	71	88	81
Falaba	50	27	0	0	8	15	23	50	46
Kailahun	91	0	0	0	3	88	91	91	100
Kambia	74	0	0	0	2	72	74	74	100
Karene	62	0	0	14	7	41	48	62	77
Kenema	141	0	0	43	15	83	98	141	70
Koinadugu	67	0	0	48	3	16	19	67	28
Kono	114	0	0	65	2	40	42	107	39
Moyamba	110	44	0	0	7	51	58	102	57
Port Loko	118	0	0	0	57	61	118	118	100
Pujehun	104	0	0	1	6	97	103	104	99
Tonkolili	117	51	0	0	14	50	64	115	56
WAR	72	1	2	0	3	66	69	72	96
WAU	108	0	0	0	7	100	107	107	100
<b>Cumulative</b>	<b>1564</b>	<b>124</b>	<b>2</b>	<b>265</b>	<b>157</b>	<b>992</b>	<b>1149</b>	<b>1540</b>	<b>75</b>
<b>KEY:</b>		90 - 100		75 - 89		0 - 74			

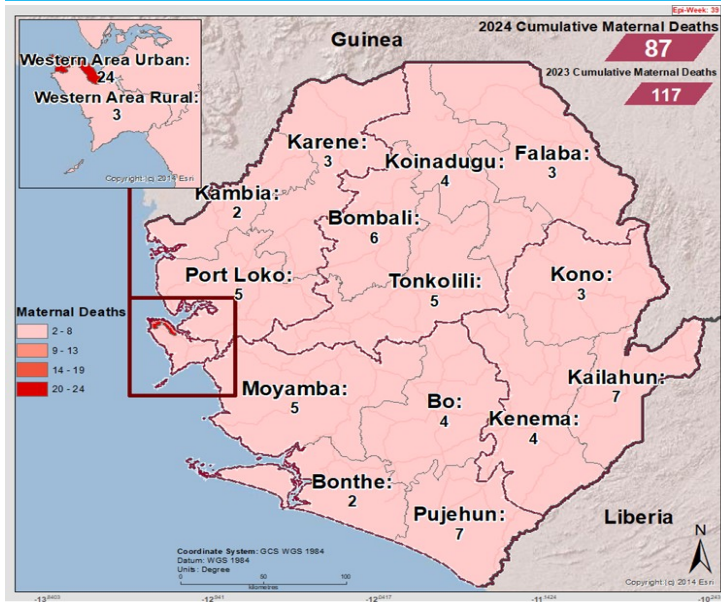
For week eleven of 2024, a total of 1,564 facilities reported countrywide using various means of reporting. Mobile SMS and mobile internet were used exclusively by four districts (Kailahun, Kambia, Port Loko and WAU ). Only one district (WAR) used paper based reporting of which, 2/72 (2.7%) of the facilities reported using paper. The country has moved from paper based reporting to electronic since 2018

## Call signals by reporting districts epi week 11, 2024 (N=134)



For week eleven of 2024, greater proportion of call signals were from WAU district closely followed by Bo district, then Port Loko district. 2/16 (12.5%) of districts made zero call.

## Cumulative Maternal Deaths reported by district (epi Week 11, 2024)



## Maternal Deaths reported by district and Place of Occurrence (epi Week 11, 2024)

District	2023 Week 1 - 11	2024 Week 1 - 11	
Bo	21	4	↓
Bombali	3	6	↑
Bonthé	7	2	↓
Falaba	3	3	↔
Kailahun	5	7	↑
Kambia	9	2	↓
Karene	4	3	↓
Kenema	5	4	↓
Koinadugu	0	4	↑
Kono	8	3	↓
Moyamba	3	5	↑
Port Loko	6	5	↓
Pujehun	6	7	↑
Tonkolili	9	5	↓
Western Rural	4	3	↓
Western Urban	24	24	↔
<b>Total</b>	<b>117</b>	<b>87</b>	↓

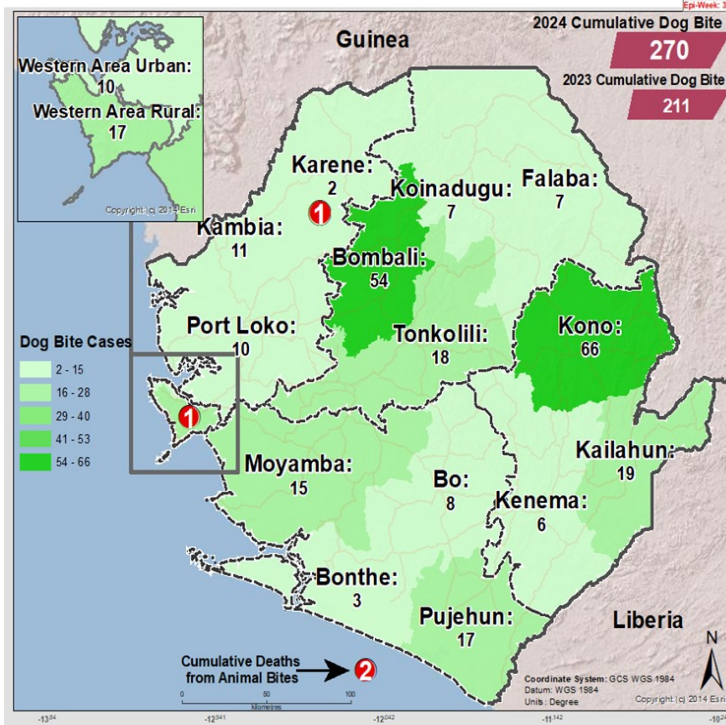
In comparison with week eleven of 2023, week eleven of 2024 has reported less maternal deaths for the same period. A total of eleven deaths were reported this week from six districts. All districts have reported maternal death. Total maternal deaths reported since the start of the year is eighty-seven (87).

## Maternal Deaths reported by district and Place of Occurrence (epi Week 10, 2024)

District	Health Facility	No. of Death
WAU	PCM. Hospital	5
Bombali	Makeni Govt. Hospital	2
Falaba	Falaba CHC	1
Kailahun	Kailahun Gov. Hospital	1
Kono	Koidu Govt. Hospital	1
Pujehun	Blama Puilla MCHP	1
<b>Total</b>		<b>11</b>

In week eleven of 2024, a total of eight maternal deaths were reported from four districts. Of the eleven maternal deaths reported, four were from hospitals and two from PHUs. The DHMTs of the districts in question are requested to investigate the causes of the maternal deaths at the PHUs.

## Cumulative Dog Bite cases reported by district (epi Week 11, 2024)

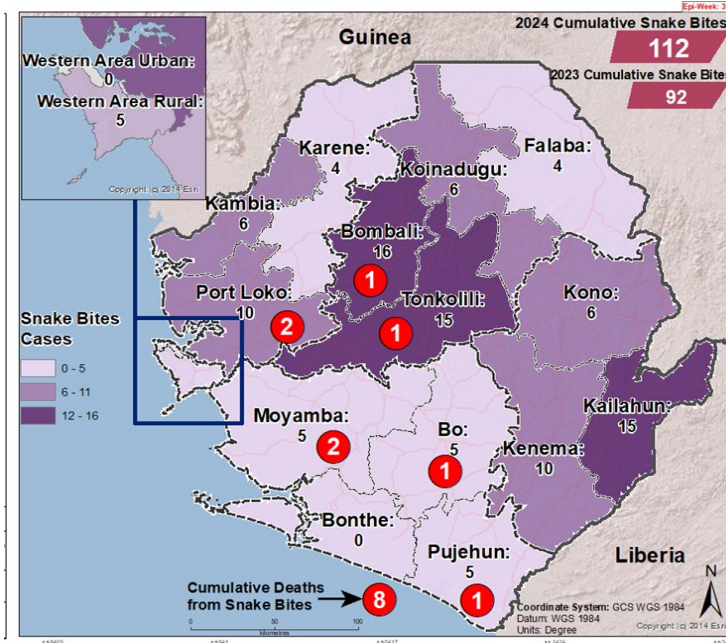


## Compared Dog Bite cases reported by district (epi Week 1 - 11, 2023 & 2024)

District	2023 Week 1 - 11	2024 Week 1 - 11	
Bo	1	8	↑
Bombali	36	54	↑
Bonthe	3	3	—
Falaba	6	7	↑
Kailahun	23	19	↓
Kambia	9	11	↑
Karene	5	2	↓
Kenema	12	6	↓
Koinadugu	2	7	↑
Kono	49	66	↑
Moyamba	8	15	↑
Port Loko	23	10	↓
Pujehun	13	17	↑
Tonkolili	0	18	↑
Western Rural	9	17	↑
Western Urban	12	10	↓
<b>Total</b>	<b>211</b>	<b>270</b>	<b>↑</b>

Week eleven of 2024 has reported more dog bite cases including two deaths related to dog bite compared to 2023 same period. The highest number of cases were reported from Kono, Bombali, Kailahun, Pujehun and Tonkolili districts and the deaths were from WAR and Karene districts. Total reported cases since the start of the year is 243.

## Cumulative Snake Bite cases reported by district (epi Week 11, 2024)



## Compared Snake Bite cases reported by district (epi Week 1 - 11, 2023 & 2024)

District	2023 Week 1 - 11	2024 Week 1 - 11	
Bo	2	5	↑
Bombali	15	16	↑
Bonthe	0	0	—
Falaba	8	4	↓
Kailahun	9	15	↑
Kambia	3	6	↑
Karene	5	4	↓
Kenema	7	10	↑
Koinadugu	6	6	—
Kono	13	6	↓
Moyamba	4	5	↑
Port Loko	12	10	↓
Pujehun	7	5	↓
Tonkolili	0	15	↑
Western Rural	1	5	↑
Western Urban	0	0	—
<b>Total</b>	<b>92</b>	<b>112</b>	<b>↑</b>

Week eleven of 2024 reported more snake bite cases compared to week eleven of 2023 and with eight deaths related to snake bite. The deaths are from Pujehun, Bo, Port Loko, Tonkolili, Moyamba and Bombali districts. The highest number of cases were reported from Port Loko, Bombali, Tonkolili, Kailahun and Kenema districts. Total reported cases since the start of the year is 112.

**NATIONAL WEEKLY EPIDEMIOLOGICAL BULLETIN PRODUCTION TEAM**



**Editor: Charles Keimbe**



**Publisher: Mr. Harold Thomas**

**Co Editor: Haja Fatmata Bangura**

**Data Analyst: Mr. Samba Kama-**

